

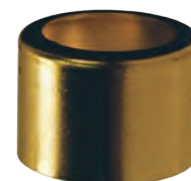
Ferrules

for air and fluid

Brass Part #	Price/E	Pkg Qty	Ferrule ID	Ferrule Length	End Hole Size	Metal Gauge	Std Ind Part #	Ribbed Die*	Plain Die*
BFM478	\$0.45	50	.478"	11/16"	21/64"	.024"	4750	R41	P41/P42
BFM500	0.56	50	.500"	1"	11/32"	.024"	7322	R40	P40
BFM525	0.57	50	.525"	1"	3/8"	.024"	7323	R39	P39
BFM531	0.56	50	.531"	1"	7/16"	.024"	7324	R39	P39
BFM562	0.60	50	.562"	1"	7/16"	.024"	7325	R37	P38
BFM593	0.62	50	.593"	1"	7/16"	.024"	7326	R36	P37
BFM625	0.63	50	.625"	1"	7/16"	.024"	7327	R35	P36
BFM656	0.75	50	.656"	1"	7/16"	.024"	7328	R34	P35
BFM687	0.75	50	.687"	1"	1/2"	.024"	7329	R33	P34
BFM718	0.72	50	.718"	1"	5/8"	.024"	7330	R31	P32
BFM718B	0.72	50	.718"	1"	1/2"	.024"	7330B	R31	P32
BFM750	0.79	50	.750"	1"	5/8"	.024"	7331	R30	P31
BFM750B	0.76	50	.750"	1"	1/2"	.024"	7331B	R30	P31
BFM781	0.91	50	.781"	1"	5/8"	.024"	7332	R29	P30
BFM781B	0.93	50	.781"	1"	1/2"	.024"	7332B	R29	P30
BFM812	0.95	50	.812"	1"	5/8"	.024"	7333	R28	P29
BFL380	0.31	50	.380"	1/2"	17/64"	.016"	622	R44	P45
BFL400	0.35	50	.400"	15/32"	17/64"	.020"	619	R44	P44
BFL410	0.32	50	.410"	1/2"	17/64"	.016"	620	R43	P44
BFL450	0.32	50	.450"	9/16"	11/32"	.016"	769	R41	P42
BFL500	0.33	50	.500"	1/2"	11/32"	.016"	624	R40	P41
BFL525	0.33	50	.525"	1/2"	11/32"	.016"	625	R39	P40
BFL548	0.34	50	.548"	31/64"	3/8"	.015"	626	R38	P39
BFL564	0.45	50	.564"	3/4"	3/8"	.019"	3588	R37	P38
BFL575	0.36	50	.575"	31/64"	15/32"	.019"	KK	R37	P38
BFL600	0.37	50	.600"	1/2"	1/2"	.019"	JJ	R36	P37
BFL625	0.39	50	.625"	1/2"	1/2"	.019"	II	R35	P36
BFL650	0.40	50	.650"	1/2"	1/2"	.019"	HH	R34	P35
BFL675	0.43	50	.675"	33/64"	1/2"	.019"	GG	R34	P34
BFL725	0.43	50	.725"	17/32"	1/2"	.019"	EE	R31	P32
BFL750	0.44	50	.750"	17/32"	1/2"	.019"	DD	R30	P32
BFL775	0.67	50	.775"	17/32"	1/2"	.016"	CC	R31	P31



BFM

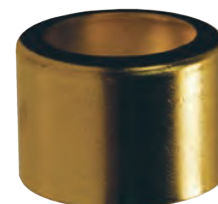


BFL

- These dies for use with 5111A and 1765A ferrule machine. Other sizes are available. Ribbed Dies per set: **\$190.00**; Plain Dies per set: **\$190.00**

for fluid only

Brass Part #	Price/E	Pkg Qty	Ferrule ID	Ferrule Length	End Hole Size	Metal Gauge	Std Ind Part #	Ribbed Die*	Plain Die*
BF800	\$0.78	25	.800"	.844"	.688"	.024"	---	R28	P29
BF825	0.77	25	.825"	.844"	.688"	.024"	---	R27	P28
BF850	0.55	25	.850"	.568"	.688"	.019"	Z	R26	P27
BFW875	0.79	25	.875"	.844"	.688"	.024"	7244A	R25	P26
BFW900	0.83	25	.900"	.844"	.688"	.024"	5029A	R24	P25
BFW925	1.05	25	.925"	.840"	.690"	.025"	7113	R23	P24
BFW975	1.05	25	.975"	.844"	.688"	.024"	5028A	R21	P22
BFW1025	1.10	25	1.025"	.844"	.693"	.024"	7114A	R19	P20
BFW1175	1.20	25	1.175"	.844"	.875"	.024"	7088A	R13	P14
BFMW1050	1.80	25	1.050"	.625"	.750"	.025"	3605	R18	P19
BFMW1100	1.25	25	1.100"	.843"	.812"	.023"	5027	R16	P17
BFMW1150	1.25	25	1.150"	.844"	.880"	.024"	7104A	R15	P15
BFMW1225	1.85	25	1.225"	.875"	.875"	.025"	875-K	R11	P12
BFMW1275	3.50	25	1.275"	.875"	1.000"	.025"	875-I	R9	P10
BFMW1400	3.55	25	1.400"	.687"	1.120"	.020"	D	R4	P5
BFMW1500	2.50	25	1.500"	.875"	1.120"	.025"	1500	---	P1



BFMW

- These dies for use with 5111A and 1765A ferrule machine. Other sizes are available. Ribbed Dies per set: **\$190.00**; Plain Dies per set: **\$190.00**

sold in package quantities only