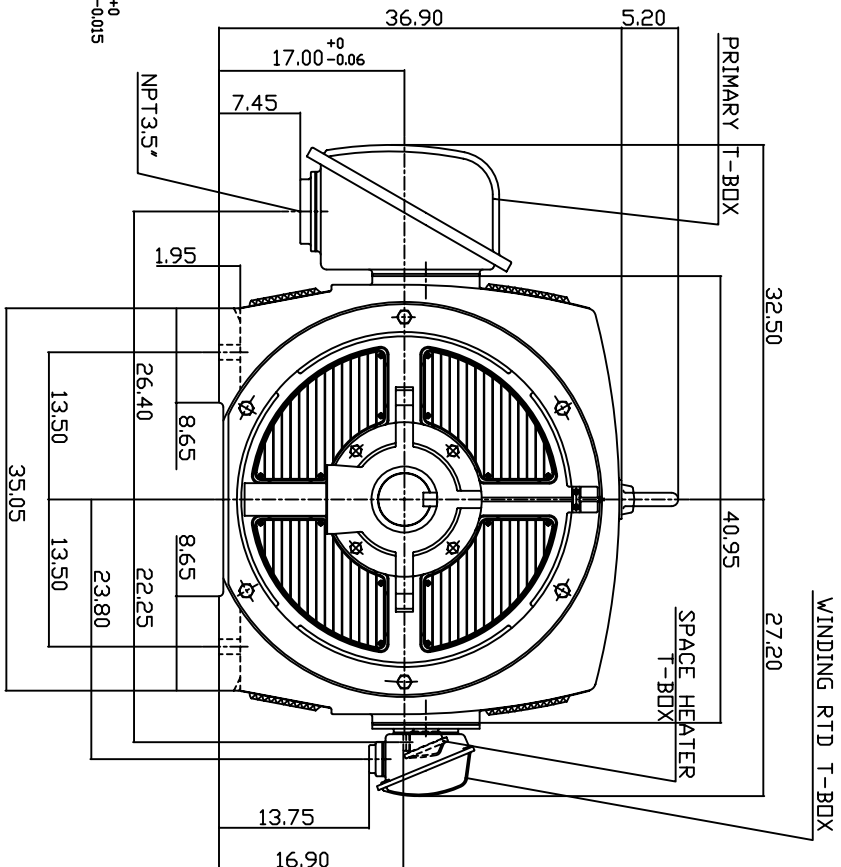
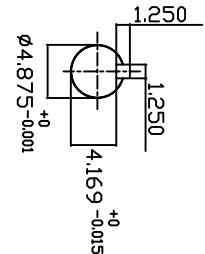
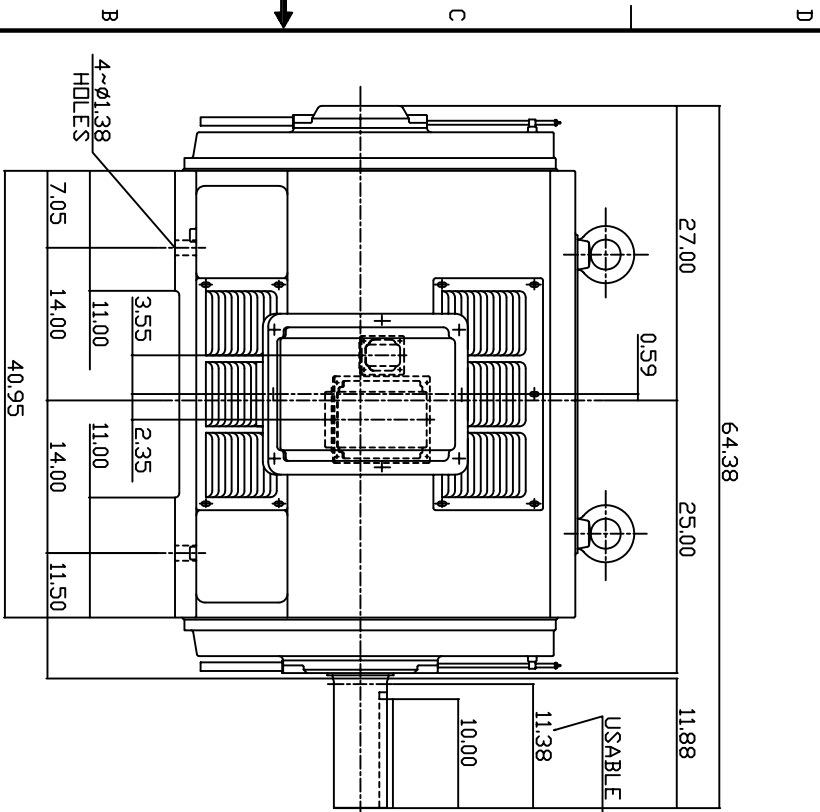


| TYPE | OUTPUT | | POLE | TIME RATING | VOLTAGE V | HZ | SYNSPEED R.P.M |
|---------|--------|-----|------|-------------|-----------|----|----------------|
| | HP. | KW. | | | | | |
| ASHA-PA | 900 | 671 | 6 | CDNT. | 2300/4160 | 60 | 1200 |

WEATHER PROTECTED TYPE I. SQUIRREL-CAGE ROTOR



NOTE: 1. DIMENSIONS IN INCH.

2. FRAME NO. 6806B
3. F CLASS INSULATION, S.F.1.15
4. FOR DIRECT DRIVE
5. WITH SPACE HEATER 120 VOLT SINGLE PHASE 300 WATTS
6. 100 OHM PLATINUM WINDING RTD'S 2/PHASE
7. BEARING SIZE: DRIVE END: 6326
NON-DRIVE END: 6322
8. MOTOR APPROX. WEIGHT: 7800 LBS

TV-66C

| DWN. | V.LLIN | DATE |
|--|--------|-------------|
| CHKD. <td>V.LLIN</td> <td>APR-17-2003</td> | V.LLIN | APR-17-2003 |
| APPD. <td>C.VANG</td> <td>APR-17-2003</td> | C.VANG | APR-17-2003 |

| DATE | OUTLINE DIMENSIONS |
|-------------------|-------------------------|
| MAY 6, 2004 | 3-PHASE INDUCTION MOTOR |
| CATALOG NO. P9006 | |

TEC Westinghouse DWG NO. 3A040T3897 REV: 00