

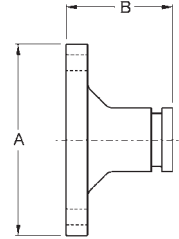
Flange Adapters - Series FA

Application:

- used to connect an ANSI Class 125 and 150 flange to a grooved pipe using a grooved clamp

Features:

- Provides a rigid one piece connection that can be disconnected by removing the clamp assembly. To assemble to another flange, position bolt heads on the adapter (grooved) side.
- ductile iron body with rust inhibiting paint



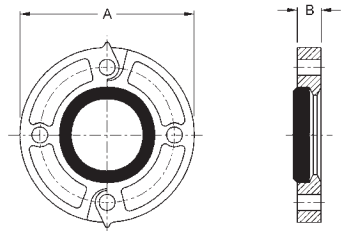
Nominal Size	Pipe OD	Max PSI at 70°F	Flange Dimensions		Approx. Weight (lbs.)	Bolts		Ductile Iron	
			A	B		qty	size	Part #	Price/E
2"	2.375	300	6"	2-3/8"	2.8	4	5/8"	FA20	\$37.40
3"	3.500	300	7 1/4"	2-3/8"	5.3	4	5/8"	FA30	61.15
4"	4.500	300	8 1/2"	2-3/8"	6.4	8	5/8"	FA40	77.40
6"	6.625	300	11"	2-9/16"	11.5	8	3/4"	FA60	142.30
8"	8.625	300	13 1/4"	3"	23.0	8	3/4"	FA80	208.50

ANSI Split Flanges - Series SF



Features:

- provides a direct connection between a grooved adapter and an ANSI Class 125 and 150 raised face flanged component
 - can be used with flat face flanges by removing the raised projections on the outside face of the flange.
 - ductile iron body with rust inhibiting paint
 - Underwriters Listed and Factory Mutual approved
 - Buna gaskets are available upon request
- Comparable to: Victaulic's #741 Grinnell's #7012



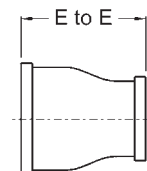
Nom. Size	Pipe OD	Max. PSI at 70°F	Flange Dimensions		Approx. Weight (lbs.)	Bolts		Ductile Iron w/ gasket		Replacement Gaskets EPDM	
			A	B		qty	size	Part #	Price/E	Part #	Price/E
2"	2.375"	300	6"	13/16"	3.5	4	5/8"	ANSI20	\$75.85	FLG200E	\$8.15
2 1/2"	2.875"	300	7"	13/16"	4.6	4	5/8"	ANSI25	82.05	FLG250E	9.40
3"	3.500"	300	7 1/2"	13/16"	5.1	4	5/8"	ANSI30	98.60	FLG300E	10.95
4"	4.500"	300	9"	15/16"	8.8	8	5/8"	ANSI40	131.05	FLG400E	12.50
6"	6.625"	300	11"	1"	10.6	8	3/4"	ANSI60	156.00	FLG600E	19.35
8"	8.625"	300	13 1/2"	1-1/8"	17.0	8	3/4"	ANSI80	199.70	FLG800E	34.00

Reducing Adapters - Series RA



Features:

- ductile iron body with rust inhibiting paint
- Underwriters Listed and Factory Mutual approved
- Comparable to: Victaulic's #50, Grinnell's #7072



Nominal Size	Nominal Size	Dimension E to E	Approx. Weight (Lbs.)	Ductile Iron	
				Part #	Price/E
2"	1 1/2"	2.5	0.9	RAGG20150	\$26.25
2 1/2"	2"	2.5	1.1	RAGG25020	27.45
3"	2"	2.5	1.2	RAGG3020	26.25
3"	2 1/2"	2.5	1.5	RAGG30250	32.45
4"	2"	3.0	2.2	RAGG4020	38.60
4"	2 1/2"	3.0	2.4	RAGG40250	40.55
4"	3"	3.0	2.4	RAGG4030	43.25
5"	4"	3.5	4.4	RAGG5040	69.90
6"	2"	4.0	4.0	RAGG6020	78.65
6"	2 1/2"	4.0	4.4	RAGG60250	90.30
6"	3"	4.0	4.6	RAGG6030	82.40
6"	4"	4.0	7.0	RAGG6040	82.40

R