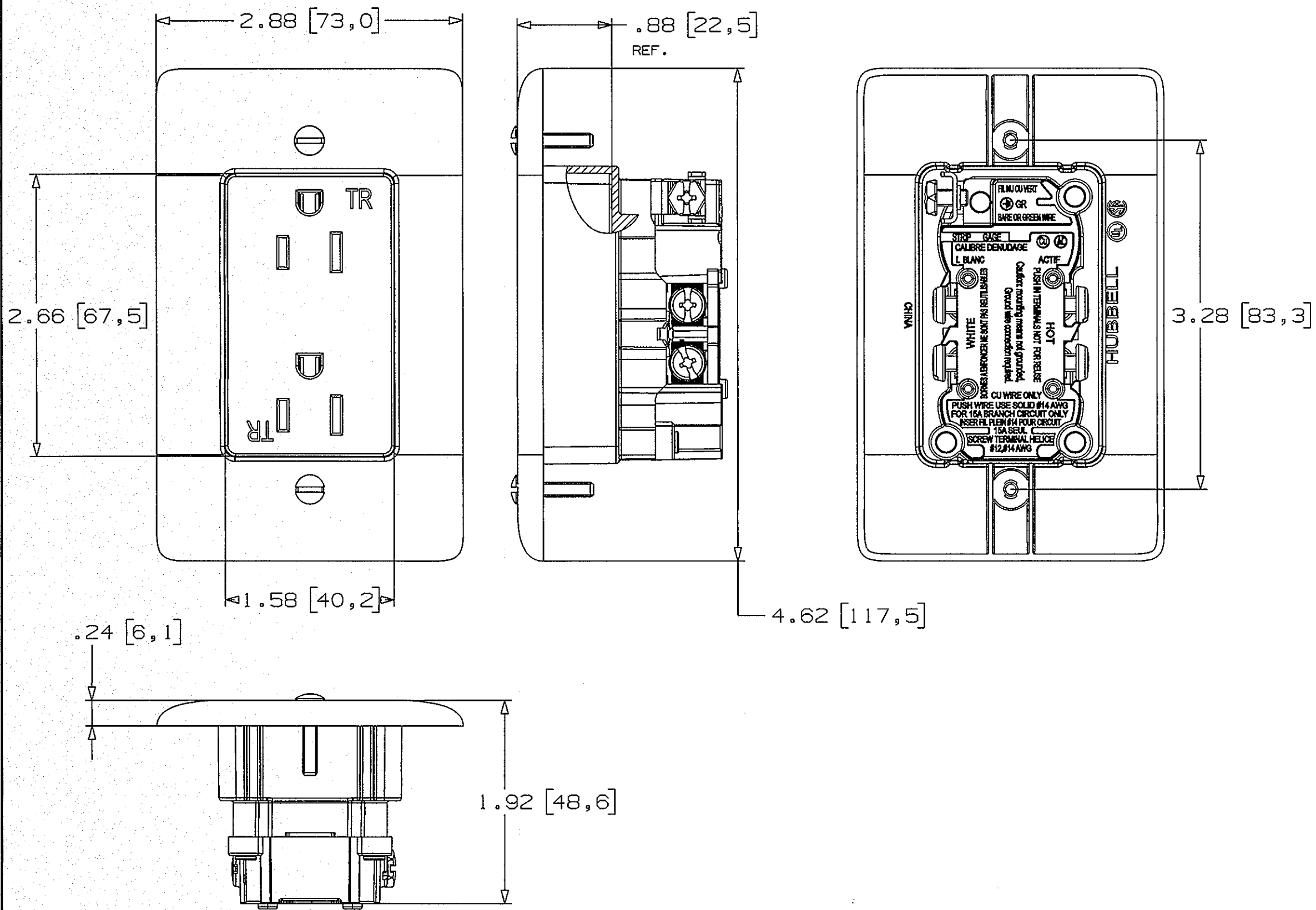


M12551 3



NOTES:
1. ALL DIMENSIONS ARE IN INCHES [mm].

CAT#	DESCRIPTION	RATING	COLOR
RR1510LA			LIGHT ALMOND
RR1510I	RECESS TR		IVORY
RR1510W	DUPLEX	15A	WHITE
RR1510	RECEPTACLE,	125V	BROWN
RR1510GY	15A, 125V		GRAY
RR1510BK			BLACK

LIST OF PARTS

DESCRIPTION	MATERIAL	FINISH
COVER	THERMOPLASTIC	COLOR PER CAT#
BASE	THERMOPLASTIC	YELLOW
STRAP	GALV. STEEL	
TERMINAL	BRASS	
MOUNTING SCREW	STEEL	Zn PLATE
DRIVE STREW	STEEL	Zn PLATE
LINE SCREW	STEEL	BRASS PLATE
NEUTRAL SCREW	STEEL	Zn PLATE
GR. SCREW	STEEL	Zn PLATE + GREEN

REPAIRABLE	NON-REPAIRABLE
<input type="checkbox"/>	<input checked="" type="checkbox"/>

SYM	REVISIONS	APP	DATE
3	UPDATE THE PRINT PER DCN #21107		03/17/15
2	BASE COLOR YELLOW WAS BLACK PER DCN #20927		12/10/14
1	NEW RELEASE PER DCN #20652		08/19/14

THE DESIGN AND DIMENSIONS OF THE PRODUCT SHOWN ON THIS DRAWING ARE SUBJECT TO CHANGE WITHOUT NOTICE

TITLE
RECESS TR DUP RCPT, 15A 125V

TOLERANCES UNLESS OTHERWISE SPECIFIED	WIRING DEVICE-KELLEMS HUBBELL INCORPORATED SHELTON, CT	
.XX = ±.01	DR. BY N.H	APP. BY SM
.XXX = ±.005	TR. BY N.H	SCALE 1:1
ANGLES = ±2°	CHK. BY C.Z	DATE 06/04/2014

DIMENSION SHEET FOR CAT. NO. SEE TABLE REPAIRABLE NON-REPAIRABLE B M12551 3