

Cast Iron Threaded Foot Valves

 Must be installed in the *vertical position*



complete assembly threaded



strainer



flapper assembly



valve



seat plate

G

| NPT Size | Painted Cast Iron | | Painted Cast Iron | | Painted Cast Iron / Rubber | | Rubber | | Painted Cast Iron | |
|----------|-------------------|---------|-------------------|---------|----------------------------|---------|--------------|---------|-------------------|---------|
| | Part # | Price/E | Part # | Price/E | Part # | Price/E | Part # | Price/E | Part # | Price/E |
| 1½" | DFVS20 | \$32.55 | FVS20 | \$6.90 | FVFA20 | \$14.80 | FVL20 | \$6.65 | FVSP20 | \$6.35 |
| 2" | DFVS25 | 52.85 | FVS25 | 10.60 | FVFA25 | 17.80 | FVL25 | 10.60 | FVSP25 | 5.30 |
| 2½" | DFVS30 | 61.10 | FVS30 | 20.95 | FVFA30 | 22.30 | FVL30 | 13.00 | FVSP30 | 9.55 |
| 3" | DFVS35 | 77.70 | FVS35 | 21.20 | FVFA35 | 23.80 | FVL35 | 19.65 | FVSP35 | 15.20 |
| 4" | DFVS40 | 142.00 | FVS40 | 28.80 | FVFA40 | 35.00 | FVL40 | 30.75 | FVSP40 | 16.70 |
| 6" | DFVS60 | 339.95 | FVS60 | 68.90 | FVFA60 | 85.90 | FVL60 | 65.75 | FVSP60 | 36.10 |
| 8" | DFVS80 | 706.15 | FVS80 | 189.35 | FVFA80 | 187.80 | FVL80 | 124.05 | FVSP80 | 67.75 |

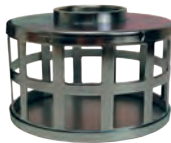
Strainers and Skimmers



standard strainer round hole type



standard strainer round hole type



standard strainer square hole type



long thin strainer round hole type



bottom skimmer round hole type



top skimmer round hole type

| NPSM Size | Zinc Plated Steel | | 304 Stainless Steel | | Zinc Plated Steel | | Zinc Plated Steel | | Zinc Plated Steel | | Zinc Plated Steel | |
|-----------|-------------------|---------|---------------------|----------|-------------------|---------|-------------------|---------|-------------------|---------|-------------------|---------|
| | Part # | Price/E | Part # | Price/E | Part # | Price/E | Part # | Price/E | Part # | Price/E | Part # | Price/E |
| 1½" | RHS20 | \$24.60 | RRHS20 | \$260.00 | SHS20 | \$24.60 | RSS20 | \$22.90 | DSB20 | \$80.80 | DST20 | \$80.80 |
| 2" | RHS25 | 28.65 | RRHS25 | 340.40 | SHS25 | 28.65 | RSS25 | 26.65 | DSB25 | 90.30 | DST25 | 90.30 |
| 2½" | RHS30 | 36.20 | --- | --- | SHS30 | 36.20 | RSS30 | 33.55 | --- | --- | --- | --- |
| 3" | RHS35 | 45.75 | RRHS35 | 475.00 | SHS35 | 45.75 | RSS35 | 42.45 | DSB35 | 201.60 | DST35 | 201.60 |
| 4" | RHS40 | 64.20 | RRHS40 | 590.00 | SHS40 | 64.20 | RSS40 | 59.65 | --- | --- | --- | --- |
| 5" | RHS50 | 136.65 | --- | --- | --- | --- | --- | --- | --- | --- | --- | --- |
| 6" | RHS60 | 185.70 | RRHS60 | 1227.30 | SHS60 | 185.70 | --- | --- | --- | --- | --- | --- |
| 8" | RHS80 | 424.55 | RRHS80 | 2710.95 | SHS80 | 424.55 | --- | --- | --- | --- | --- | --- |
| 10" | RHS100 | 778.60 | --- | --- | --- | --- | --- | --- | --- | --- | --- | --- |
| 12" | RHS120 | 1415.80 | --- | --- | --- | --- | --- | --- | --- | --- | --- | --- |

Witches Hat Strainers & Gaskets

Features:

- for use with female cam and groove couplings
- pre-attached Buna-N gasket



NEW

| Size | 304 Stainless Steel | | Buna | |
|------|---------------------|---------|----------------|---------|
| | Strainer Part # | Price/E | Gasket Part # | Price/E |
| 3" | WH300-A | \$36.25 | WH300-G | \$3.65 |
| 4" | WH400-A | 44.70 | WH400-G | 3.95 |