

Swivels

Features:

- available in clamp and weld configurations
- elastomers: silicone and PTFE standard, optional elastomers available
- finish: sanitary finish ID and OD

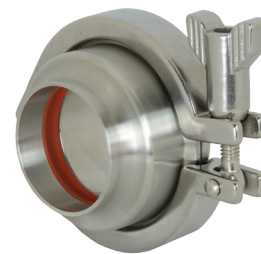
straight swivel clamp - style 20

Size	Dimensions			Pressure Rating PSI @ 70°F (21°C)	Pressure Rating PSI @ 250°F (121°C)	316L Stainless Steel	
	A	B	C			Part #	Price/E
1"	2.56"	3.00"	1.00"	500	300	<i>SJSS100CC-20</i>	\$1800.15
1½"	2.56"	3.00"	1.50"	500	300	<i>SJSS150CC-20</i>	1853.74
2"	3.09"	3.00"	2.00"	450	250	<i>SJSS200CC-20</i>	2156.87
2½"	3.44"	3.00"	2.50"	400	200	<i>SJSS250CC-20</i>	3824.20
3"	3.94"	3.00"	3.00"	350	175	<i>SJSS300CC-20</i>	4439.59
4"	5.08"	4.19"	4.00"	300	150	<i>SJSS400CC-20</i>	7974.76

straight weld connection - style 20

Size	Dimensions			Pressure Rating PSI @ 70°F (21°C)	Pressure Rating PSI @ 250°F (121°C)	316L Stainless Steel	
	A	B	C			Part #	Price/E
1"	2.56"	2.00"	1.00"	500	300	<i>SJSS100BB-20</i>	\$1764.92
1½"	2.56"	2.00"	1.50"	500	300	<i>SJSS150BB-20</i>	2953.97
2"	3.09"	2.00"	2.00"	450	250	<i>SJSS200BB-20</i>	2038.08
2½"	3.44"	2.00"	2.50"	400	200	<i>SJSS250BB-20</i>	3008.10
3"	3.94"	2.00"	3.00"	350	175	<i>SJSS300BB-20</i>	4236.64
4"	5.08"	2.94"	4.00"	300	150	<i>SJSS400BB-20</i>	8473.63

- dimensional information can be found at dixonvalve.com

Pipe, Welding
& Tube Fittings