

**BALDOR® • RELIANCE** 

**Product Information Packet**

**SUM20754**

**7.50HP,1800RPM,3PH,60HZ,210TY,TENV,FOOT**

Part Detail							
Revision:	-	Status:	PRD/A	Change #:		Proprietary:	No
Type:	AC	Elec. Spec:	E02262K AR008	CD Diagram:	416820-001	Mfg Plant:	
Mech. Spec:		Layout:	066930-502	Poles:	04	Created Date:	04-09-2015
Base:		Eff. Date:	04-13-2015	Leads:			

Specs			
Catalog Number:	SUM20754		
Enclosure:	TENV		
Frame:	210TY		
Frame Material:	Iron		
Output @ Frequency:	7.500 @ 60 HZ		
Voltage @ Frequency:	230 V @ 60 HZ		
	460 V @ 60 HZ		
XP Class and Group:	None		
XP Division:	Not Applicable		
Agency Approvals:	CCSA US		
	CE		
	WEEE		
Base Indicator:	No Mounting		
Bearing Grease Type:	Polyrex EM (-20F +300F)		
Current @ Voltage:	10.4 A @ 460 V		
	20.8 A @ 230 V		
Design Code:	B		
Drip Cover:	No Drip Cover		

<b>Duty Rating:</b>	15 MIN		
<b>Heater Indicator:</b>	No Heater		
<b>Insulation Class:</b>	F		
<b>Inverter Code:</b>	Inverter Ready		
<b>KVA Code:</b>	H		
<b>Lifting Lugs:</b>	Vertical Lifting Lugs		
<b>Motor Type:</b>	M		
<b>Mounting Arrangement:</b>	V1		
<b>Product Family:</b>	Other		
<b>Pulley End Bearing Type:</b>	Ball		
<b>Pulley Face Code:</b>	D-Flange		
<b>Shaft Rotation:</b>	Reversible		
<b>Shaft Slinger Indicator:</b>	No Slinger		
<b>Speed Code:</b>	Single Speed		
<b>Motor Standards:</b>	NEMA		
<b>Starting Method:</b>	Direct on line		
<b>Thermal Device - Winding:</b>	Normally Closed Thermostat		

Nameplate 000613006SC

KG 157

<b>Nameplate 000613007MN</b>										
<b>CAT NO</b>	SUM20754	<b>SPEC NO.</b>	P21G2750							
<b>HP</b>	7.5	<b>AMPS</b>	20.8/10.4		<b>VOLTS</b>	230/ 460		<b>DESIGN</b>	B	
<b>FRAME SIZE</b>	210TY	<b>RPM</b>	1755		<b>HZ</b>	60	<b>AMB</b>	40	<b>SF</b>	1.15
<b>D.E. BRG.</b>	60BC02JPP30A		<b>PH</b>	3	<b>DUTY</b>	*		<b>INSUL</b>	F	
<b>O.D.E. BRG.</b>	30BC02JPG30A		<b>TYPE</b>	P	<b>ENCL</b>	TENV		<b>CODE</b>	H	
			<b>POWER FACTOR</b>		<b>NEMA-NOM-EFF</b>					
			<b>MAX CORR KVAR</b>		<b>GUARANTEED EFFICIENCY</b>					
					<b>NEMA NOM/CSA QUOTED EFF @</b>	100% LOAD				
<b>SER.NO.</b>					<b>MOTOR WEIGHT</b>	346	<b>LBS.</b>			
	SUB. IN WATER ONLY; MAX									
	DEPTH- REFER TO INSTR MANUAL									
	*15 MIN IN AIR FINAL CONN AT									

<b>Nameplate 000613007MR</b>										
<b>CAT NO</b>	SUM20754	<b>SPEC NO.</b>	P21G2750							
<b>HP</b>	7.5	<b>AMPS</b>	20.8/10.4		<b>VOLTS</b>	230/ 460		<b>DESIGN</b>	B	
<b>FRAME SIZE</b>	210TY	<b>RPM</b>	1755		<b>HZ</b>	60	<b>AMB</b>	40	<b>SF</b>	1.15
<b>D.E. BRG.</b>	60BC02JPP30A		<b>PH</b>	3	<b>DUTY</b>	*		<b>INSUL</b>	F	
<b>O.D.E. BRG.</b>	30BC02JPG30A		<b>TYPE</b>	P	<b>ENCL</b>	TENV		<b>CODE</b>	H	
			<b>POWER FACTOR</b>		<b>NEMA-NOM-EFF</b>					
			<b>MAX CORR KVAR</b>		<b>GUARANTEED EFFICIENCY</b>					
					<b>NEMA NOM/CSA QUOTED EFF @</b>	100% LOAD				
<b>SER.NO.</b>					<b>MOTOR WEIGHT</b>	346	<b>LBS.</b>			
	SUB. IN WATER ONLY; MAX									
	DEPTH- REFER TO INSTR MANUAL									
	*15 MIN IN AIR FINAL CONN AT									

Parts List		
Part Number	Description	Quantity
SA297399	SA P21G2750	1.000 EA
RA284368	RA P21G2750	1.000 EA
000613006SC	N/P CERTIFICATION	1.000 EA
000613007MN	NP,MEDIUM AC,NO CERT,STD INDUSTRIAL	1.000 EA
000613007MR	NP, MEDIUM AC, CSA, STD INDUSTRIAL	1.000 EA
000692000EJ	NAME PLATE	1.000 EA
000692000RY	NAME PLATE	1.000 EA
000901001AA	LABEL WARNING	1.000 EA
001575000A	WIRING DIAGRAM	1.000 EA
424476003WB	WIRING DIAGRAM MEDIUMA	1.000 EA
034692002AE	HCSPP 1/4" 304 S.S.	1.000 EA
004824015A	GREASE POLYREX EM	0.100 LB
032018012DG	HHCS 1/2-13X1-1/2 316S.S	4.000 EA
032130010DC	HSHCS 1/2-13X1-1/4 304SS	4.000 EA
034692003AE	PPLG 3/8" 304 S.S.	2.000 EA
047174005C	SNAP RING	1.000 EA
047174005D	SNAP RING	1.000 EA
064262012C	SEAL	1.000 EA
064262012D	SEAL	1.000 EA
088207001AA	BRKT,DE,210SUB 88207-1WA	1.000 EA
088208001AA	MTG PLATE EX210Y SUBMERSIBLE 088208001WB	1.000 EA
413412004A	SUBM MOISTURE PROBE	2.000 EA
413412005S	LEAD WIRE ASSY(BLANKET	1.000 EA
413480001R	RESISTOR ASSEMBLY-BLANKET	1.000 EA

Parts List (continued)		
Part Number	Description	Quantity
421900144FU	ORING	1.000 EA
421900144FU	ORING	1.000 EA
032018006BM	HHCS 5/16-18X3/4 PLTGRN.	1.000 EA
032018006BM	HHCS 5/16-18X3/4 PLTGRN.	1.000 EA
032018010CG	HHCS 3/8-16X1-1/4L 316SS	4.000 EA
032080003JB	HWHMS 10-24X3/8L PLTED	4.000 EA
032080003LB	HWHMS 1/4-20X3/8L PLTED	4.000 EA
034036013AB	LCKW 5/16 EXT.TOOTH LCKW	1.000 EA
047024003AH	T/LUG AMP 34112	4.000 EA
047024003B	T/LUG AMP 33218	9.000 EA
415031017A	NUT W/WASHER 10-24 C.PLT	4.000 EA
415031017B	NUT W/WASHER1/4-20 C.P	4.000 EA
421900092FU	ORING	1.000 EA
609181014D	HEAT SHRINK TUBING 3/4	8.000 EA
700385014L	CCA #10 25' 210/250	1.000 EA
004824007K	SPECIAL PAINT	0.100 EA
033775004EA	DRSCR #6-1/4 304 S.S.	4.000 EA
034180009FD	KEY 3/8X3/8X1-1/8 303 SS	1.000 EA
088206001AB	BRKT,ODE,210SUB 88206-1WB	1.000 EA
421900144FU	ORING	1.000 EA
004824018AF	SHELL ROTELLA OIL 10W	2.500 LB
032018008BG	HHCS 5/16-18X1 BRASS-447	3.000 EA
032018012DG	HHCS 1/2-13X1-1/2 316S.S	4.000 EA
000901001AA	LABEL WARNING	1.000 EA



S/O	FRAME	HP	TYPE	PHASE/ HERTZ	RPM	VOLTS
	210TY	7.5	P	3/60	1755	230/460
AMPS	DUTY	AMB %C/ INSUL	S.F.	NEMA DESIGN	CODE LETTER	ENCLOSURE
20.8/10.4	*	40/F	1.15	B	H	SUB
E/S	ROTOR	TEST S.O.	TEST DATE	STATOR RES. @25 °C OHMS (BETWEEN LINES)		
575997	418425-41CE	---	---	412/1.65		

**PERFORMANCE**

LOAD	HP	AMPERES	RPM	% POWER FACTOR	% EFFICIENCY
NO LOAD	0	4.1	1800	21.4	0
1/4	1.87	5.0	1787	53.4	65.8
2/4	3.75	6.4	1777	70.3	77.5
3/4	5.63	8.3	1765	77.8	81.5
4/4	7.50	10.4	1753	81.5	82.8
5/4	9.37	12.7	1739	83.8	82.8

**SPEED TORQUE**

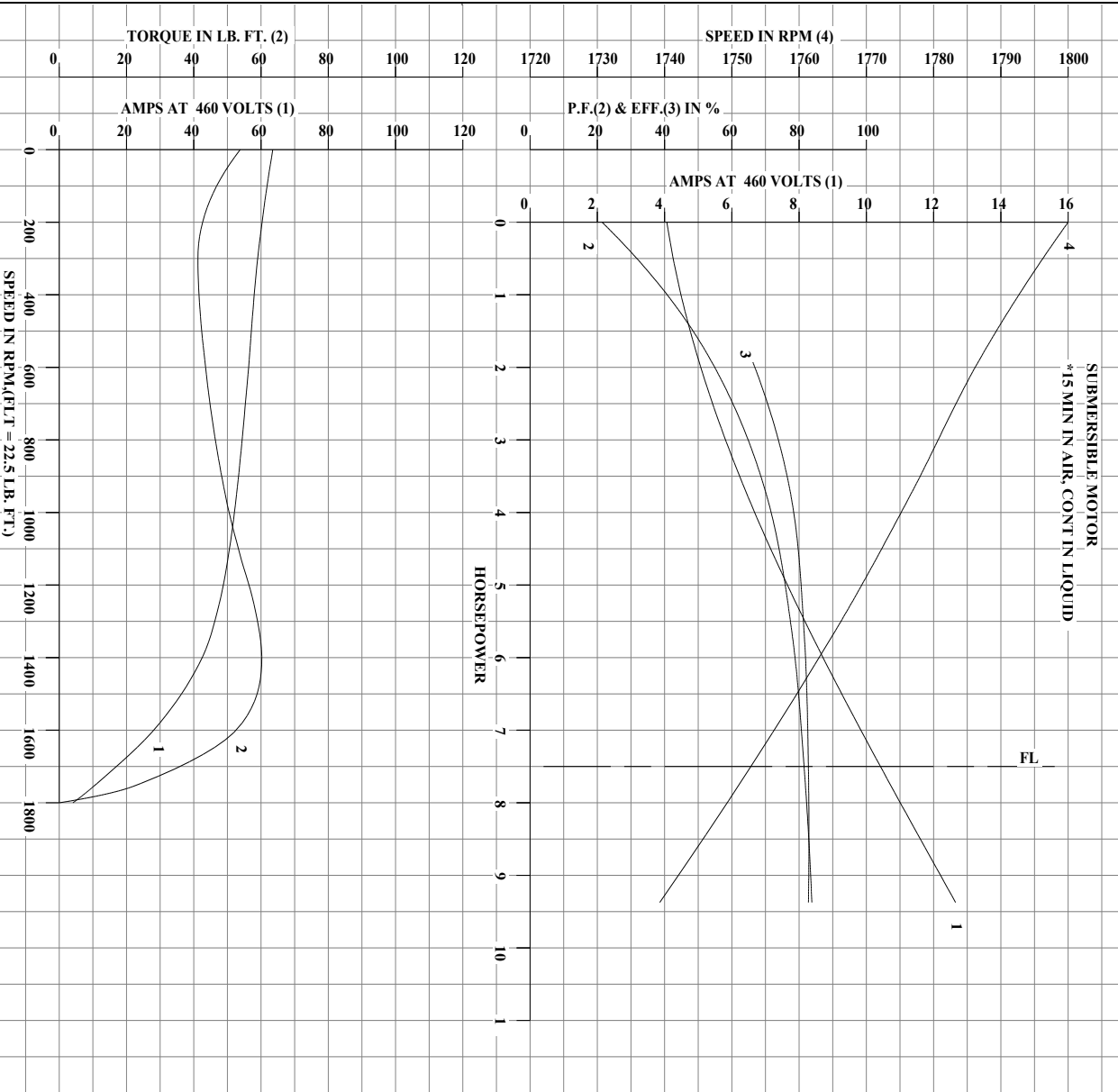
	RPM	% FULLLOAD TORQUE	TORQUE LB.-FT.	AMPERES
LOCKED ROTOR	0	239	53.8	63.5
PULL UP	300	183	41.2	59.0
BREAKDOWN	1400	268	60.2	42.5
FULL LOAD	1753	100	22.5	10.4

AMPERES SHOWN FOR 460 VOLT CONNECTION. IF OTHER CONNECTIONS ARE AVAILABLE, THE AMPERES WILL VARY INVERSELY WITH THE RATED VOLTAGE.

TYPICAL DATA  
SUBMERSIBLE MOTOR  
\*15 MIN IN AIR, CONTIN LIQUID

 A MEMBER OF THE ABB GROUP	DRAWN BY: D. M. BYRD	AC MOTOR PERFORMANCE DATA	E02262-KAR008 DATE ISSUED 08/10/04
	CHECKED BY: T.S. WILLIAMS APPROVED BY: D. M. BYRD DATE: 08/10/04		

REL.S.O.	FRAME 210TY	HP 7.5	TYPE P	PHASE/HERTZ 3/60	RPM 1755	VOLTS 230/460	AMPS 20.8/10.4	DUTY *	AMB °C / INSUL 40/F	S.F. 1.15	NEMA DESIGN B	CODE LETTER H	ENCLOSURE SUB	E/S 575997	ROTOR 418425-41CE	TEST S.O. TYPICAL DATA	TEST DATE --	STATOR RES. @ 25°C .412/1.65	OHMS (BETWEEN LINES)
----------	-------------	--------	--------	------------------	----------	---------------	----------------	--------	---------------------	-----------	---------------	---------------	---------------	------------	-------------------	------------------------	--------------	------------------------------	----------------------

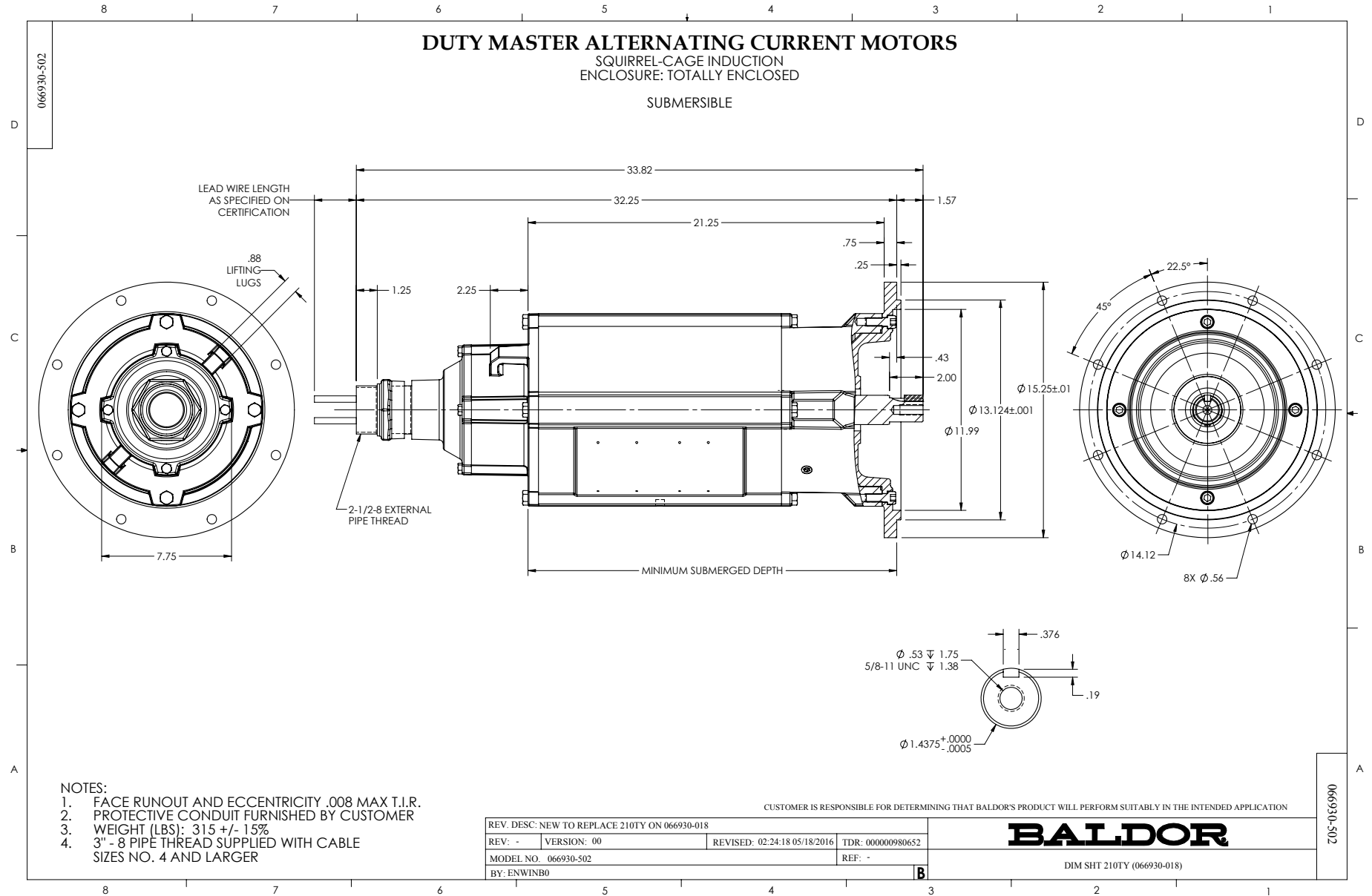


AMPERES SHOWN FOR 230/460 VOLT CONNECTION, IF OTHER VOLTAGE CONNECTIONS ARE AVAILABLE, THE AMPERES WILL VARY INVERSELY WITH THE RATED VOLTAGE.

<p><b>BALDOR</b></p> <p>A MEMBER OF THE ABB GROUP</p>	<p>DRAWN BY: D. M. BYRD</p> <p>CHECKED BY: T.S. WILLIAMS</p> <p>APPROVED BY: D. M. BYRD</p> <p>DATE: 08/10/04</p>	<p>AC MOTOR</p> <p>PERFORMANCE</p> <p>DATA</p>	<p>E02262-KAR008</p> <p>ISSUE DATE 08/10/04</p>
---	---	--	---

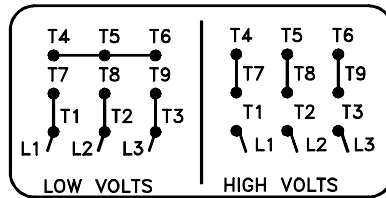
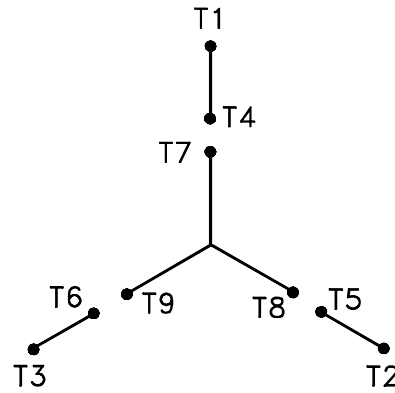
USR:PEN

Printed on 11/06/2017 2:52 PM



416820-001

A-C MOTOR  
 CONNECTION DIAGRAM  
 STANDARD 9 LEAD Y CONNECTED



(N.P. 1575-A)

416820-001

REV. DESC: LOADED TO BUS, C/R 335225		
REV. LTR: -	VERSION: 00	TDR: 000000538207
FILE: \MGA\00000\659	REVISED: 10:14:19 04/30/2010	
MTL: -	BY: RAGRA	

**BALDOR**

CONN DIAG - STANDARD 9 LEAD, Y CONNECTED

SH 1 of 1