

BALDOR® • RELIANCE 

Product Information Packet

SUM70504

5HP,1725RPM,3PH,60HZ,180TY,TENV,FOOTLES

Part Detail							
Revision:	-	Status:	PRD/A	Change #:		Proprietary:	No
Type:	AC	Elec. Spec:	E02261H AG024	CD Diagram:	416820-001	Mfg Plant:	
Mech. Spec:		Layout:	066930-500	Poles:	04	Created Date:	04-09-2015
Base:		Eff. Date:	04-13-2015	Leads:			

Specs			
Catalog Number:	SUM70504	Duty Rating:	15 MIN
Enclosure:	XPNV	Heater Indicator:	No Heater
Frame:	180TY	Insulation Class:	F
Frame Material:	Iron	Inverter Code:	Inverter Ready
Output @ Frequency:	5.000 @ 60 HZ	KVA Code:	H
Voltage @ Frequency:	230 V @ 60 HZ	Lifting Lugs:	Vertical Lifting Lugs
	460 V @ 60 HZ	Motor Type:	M
XP Class and Group:	CLI GP C,D	Mounting Arrangement:	V1
XP Division:	Division I	Product Family:	Other
Agency Approvals:	CCSA US	Pulley End Bearing Type:	Ball
	CSA	Pulley Face Code:	P-Base
	UL	Shaft Rotation:	Reversible
Base Indicator:	No Mounting	Shaft Slinger Indicator:	No Slinger
Bearing Grease Type:	Polyrex EM (-20F +300F)	Speed Code:	Single Speed
Current @ Voltage:	14.0 A @ 230 V	Motor Standards:	NEMA
	7.00 A @ 460 V	Starting Method:	Direct on line
Design Code:	B	Thermal Device - Winding:	Normally Closed Thermostat
Drip Cover:	No Drip Cover	XP Temp Code:	T3C

Nameplate 000613007AC		
CLASS I GROUP	C D X	NO. <input type="text"/>
CLASS II GROUP	X X X	
OPERATING TEMP CODE	T3C	

Nameplate 000613007MN									
CAT NO	SUM70504	SPEC NO.	P18G2701						
HP	5	AMPS	14.0/7.00		VOLTS	230/ 460		DESIGN	B
FRAME SIZE	X0180TY	RPM	1725		HZ	60	AMB	40	
D.E. BRG.	50BC02JPP30A		PH	3		DUTY	*		
O.D.E. BRG.	25BC02JPG30A		TYPE	P		ENCL	TENV		
			POWER FACTOR						
			MAX CORR KVAR						
			NEMA NOM/CSA QUOTED EFF @						
SER.NO.			MOTOR WEIGHT	250		LBS.		GUARANTEED EFFICIENCY	
								100% LOAD	
	*15 MIN IN AIR ;SUB.IN								
	WATER/SEWAGE ONLY; FINAL.								
	CONN AT 230V SEE MANUAL FOR								

Nameplate 000613007MR										
CAT NO	SUM70504	SPEC NO.	P18G2701							
HP	5	AMPS	14.0/7.00		VOLTS	230/ 460		DESIGN	B	
FRAME SIZE	X0180TY	RPM	1725		HZ	60	AMB	40	SF	1.15
D.E. BRG.	50BC02JPP30A		PH	3	DUTY	*		INSUL	F	
O.D.E. BRG.	25BC02JPG30A		TYPE	P	ENCL	TENV		CODE	H	
			POWER FACTOR		NEMA-NOM-EFF					
			MAX CORR KVAR		GUARANTEED EFFICIENCY					
					NEMA NOM/CSA QUOTED EFF @	100% LOAD				
SER.NO.					MOTOR WEIGHT	250	LBS.			
	*15 MIN IN AIR ;SUB.IN									
	WATER/SEWAGE ONLY; FINAL.									
	CONN AT 230V SEE MANUAL FOR									

Nameplate 000692000MB	
MAXDEPTH; P18G2701M	

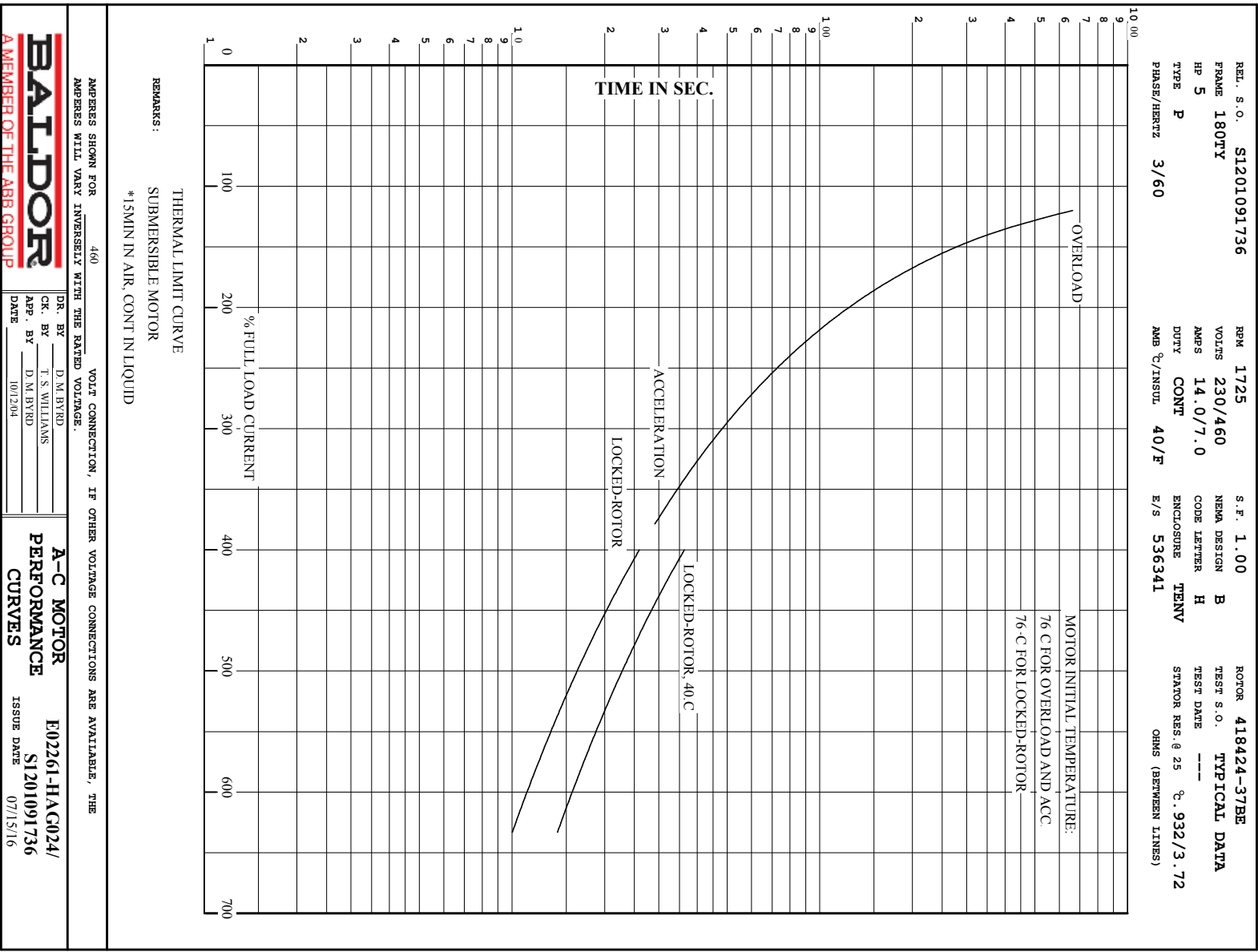
Nameplate 000692000MB	
MAXDEPTH; P18G2701M	

Parts List		
Part Number	Description	Quantity
SA297479	SA P18G2701	1.000 EA
RA284448	RA P18G2701	1.000 EA
000613007AC	UL NAMEPLATE FOR HAZARDOUS LOCATIONS	1.000 EA
000613007MN	NP,MEDIUM AC,NO CERT,STD INDUSTRIAL	1.000 EA
000613007MR	NP, MEDIUM AC, CSA, STD INDUSTRIAL	1.000 EA
000692000EJ	NAME PLATE	1.000 EA
000901001AA	LABEL WARNING	1.000 EA
001575000A	WIRING DIAGRAM	1.000 EA
424476001A	NAME PLATE-RGG	1.000 EA
424476003WB	WIRING DIAGRAM MEDIUMA	1.000 EA
034692002AE	HCSPP 1/4" 304 S.S.	1.000 EA
004824015A	GREASE POLYREX EM	0.100 LB
032018010CG	HHCS 3/8-16X1-1/4L 316SS	4.000 EA
032130008CC	HSHCS 3/8-16 X 1.00" L	4.000 EA
032620020JD	HSSS 10-24X5/8L 304S.S.	1.000 EA
034692003AE	PPLG 3/8" 304 S.S.	2.000 EA
047174005B	SNAP RING	1.000 EA
047174005C	SNAP RING	1.000 EA
064262012B	SEAL	1.000 EA
064262012C	SEAL	1.000 EA
088204001AA	BRKT,DE,180SUB 88204-1WA	1.000 EA
088205001AA	SUB PLT 180 88205-1WC	1.000 EA
413412004A	SUBM MOISTURE PROBE	2.000 EA
413412005R	LEAD WIRE ASSY(BLANKET	1.000 EA

Parts List (continued)		
Part Number	Description	Quantity
413480001R	RESISTOR ASSEMBLY-BLANKET	1.000 EA
421900124FU	ORING	1.000 EA
421900124FU	ORING	1.000 EA
603760001AA	LABYRINTH	1.000 EA
032018006BM	HHCS 5/16-18X3/4 PLTGRN.	1.000 EA
032018006BM	HHCS 5/16-18X3/4 PLTGRN.	1.000 EA
032018008BG	HHCS 5/16-18X1 BRASS-447	4.000 EA
032080003JB	HWHMS 10-24X3/8L PLTED	4.000 EA
032080003LB	HWHMS 1/4-20X3/8L PLTED	4.000 EA
034036013AB	LCKW 5/16 EXT.TOOTH LCKW	1.000 EA
047024003AH	T/LUG AMP 34112	4.000 EA
047024003B	T/LUG AMP 33218	9.000 EA
415031017A	NUT W/WASHER 10-24 C.PLT	4.000 EA
415031017B	NUT W/WASHER1/4-20 C.P	4.000 EA
421900072FU	ORING	1.000 EA
609181014D	HEAT SHRINK TUBING 3/4	8.000 EA
700385014F	CCA #12 25' 180	1.000 EA
004824007K	SPECIAL PAINT	0.100 EA
033775004EA	DRSCR #6-1/4 304 S.S.	4.000 EA
034180009DD	KEY 1/4X1/4X1-1/8L	1.000 EA
000692000MB	BALDOR RELIANCE MOTOR DATA NAMEPLATE	1.000 EA
000692000MB	BALDOR RELIANCE MOTOR DATA NAMEPLATE	1.000 EA
088203001AB	BRKT,ODE,180SUB 88203-1WB	1.000 EA
421900124FU	ORING	1.000 EA

Product Information Packet: SUM70504 - 5HP,1725RPM,3PH,60HZ,180TY,TENV,FOOTLES

004824018AF	SHELL ROTELLA OIL 10W	1.500 LB
032018006AG	HHCS 1/4-20X3/4L 316 SS	3.000 EA
032018010CG	HHCS 3/8-16X1-1/4L 316SS	4.000 EA
000901001AA	LABEL WARNING	1.000 EA
B3630-9	SUBM THERMOSTAT TAG	1.000 EA
B-3664002	TAG, (NON REGREASABLE)	1.000 EA



BALDOR
A MEMBER OF THE ABB GROUP

DR. BY	D.M.BYRD
CK. BY	T.S.WILLIAMS
APP. BY	D.M.BYRD
DATE	10/12/04

A-C MOTOR PERFORMANCE CURVES

E02261-HAG024/
S1201091736
ISSUE DATE 07/15/16

REL. S.O.	FRAME	HP	TYPE	PHASE/HERTZ	RPM	VOLTS
S1201091736	180TY	5	P	3/60	1725	230/460
AMPS	DUTY	AMB °C/ INSUL.	S.F.	NEMA DESIGN	CODE LETTER	ENCL.
14.0/7.0	CONT	40/F	1.00	B	H	TENV
E/S	ROTOR	TEST S.O.	TEST DATE	STATOR RES. @25 °C (OHMS BETWEEN LINES)		
536341	418424-37BE	---	---	.932/3.72		

PERFORMANCE


LOAD	HP	AMPERES	RPM	INPUT KW	POWER FACTOR	% EFFICIENCY
NO LOAD	0	2.7	1800	.444	20.5	0
1/4	1.25	3.3	1781	1.41	54.1	66.3
2/4	2.50	4.2	1765	2.42	71.9	77.0
3/4	3.75	5.5	1747	3.50	79.9	79.9
4/4	5.00	7.0	1727	4.65	83.9	80.2
5/4	6.25	8.6	1703	5.90	86.1	79.1

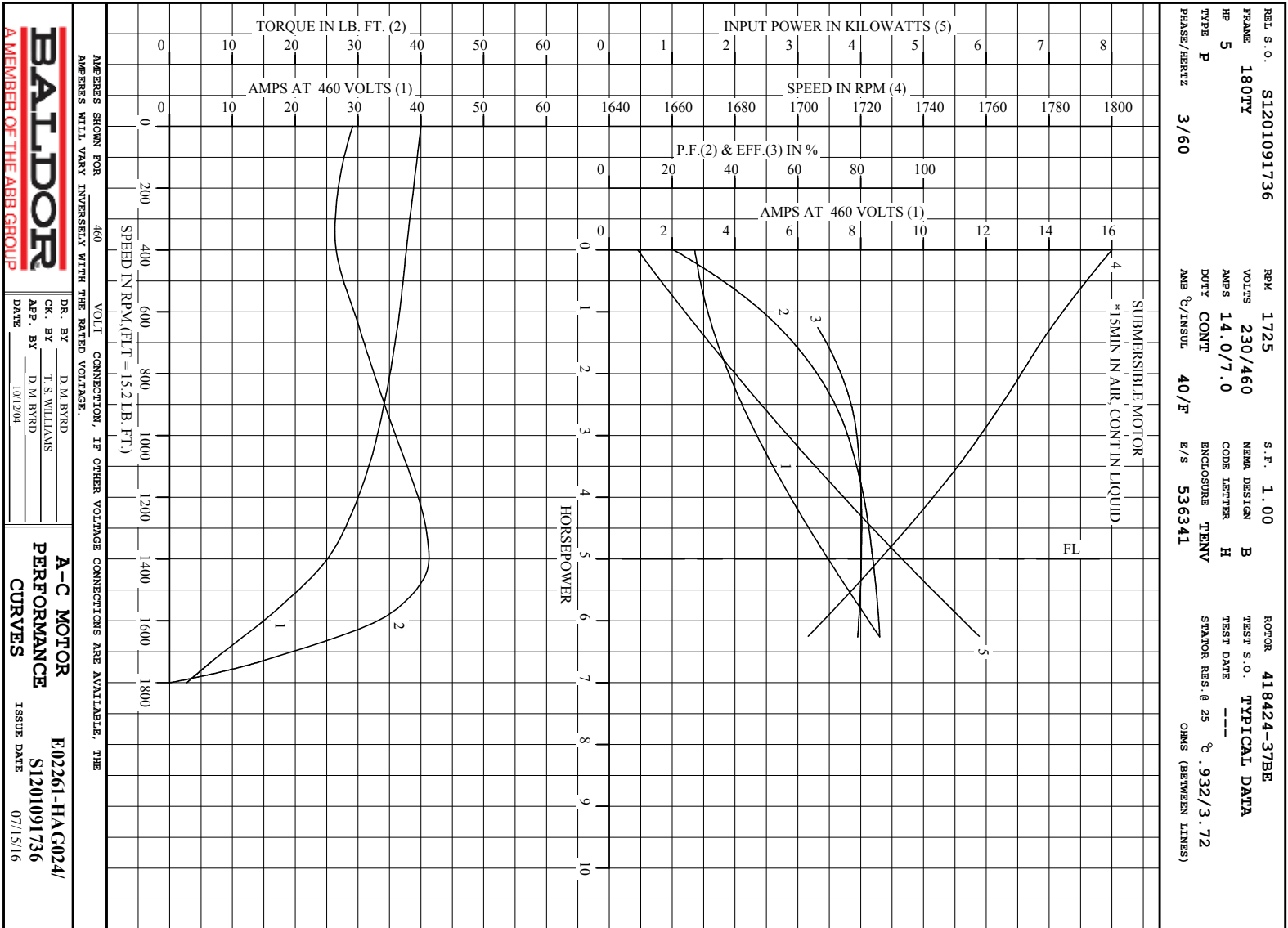
SPEED TORQUE

	RPM	TORQUE % FULL LOAD	TORQUE LB.-FT.	AMPERES
LOCKED ROTOR	0	192	29.2	40.0
PULL UP	350	173	26.3	38.0
BREKDOWN	1400	272	41.3	25.1
FULL LOAD	1727	100	15.2	7.0

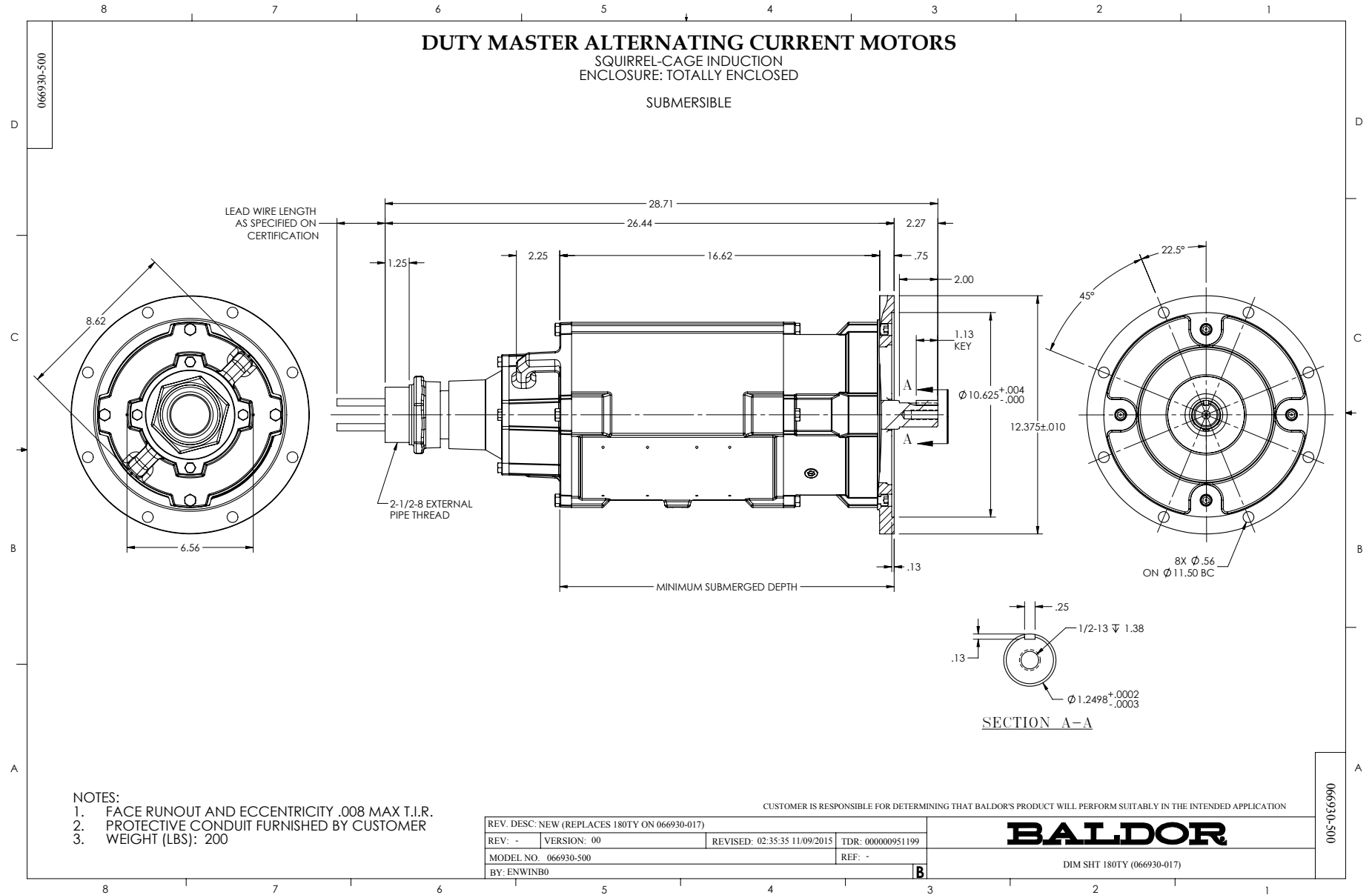
AMPERES SHOWN FOR 460. VOLT CONNECTION. IF OTHER VOLTAGE CONNECTIONS ARE AVAILABLE, THE AMPERES WILL VARY INVERSELY WITH THE RATED VOLTAGE

REMARKS: TYPICAL DATA
SUBMERSIBLE MOTOR
*15MIN IN AIR, CONT IN LIQUID

 <p>A MEMBER OF THE ABB GROUP</p>	DR. BY	D. M. BYRD	<p>A-C MOTOR PERFORMANCE DATA</p> <p>E02261-HAG024/ S1201091736 ISSUE DATE 07/15/16</p>
	CR. BY	T. S. WILLIAMS	
	APP. BY	D. M. BYRD	
	DATE	10/12/04	

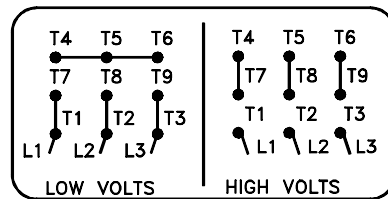
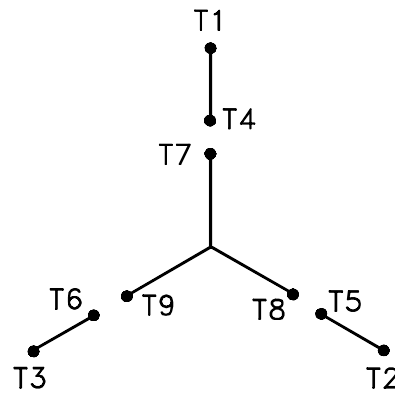


Printed on 5/4/17 8:37 @ bengap01.baldor.com



416820-001

A-C MOTOR
 CONNECTION DIAGRAM
 STANDARD 9 LEAD Y CONNECTED



(N.P. 1575-A)

416820-001

REV. DESC: LOADED TO BUS, C/R 335225		
REV. LTR: -	VERSION: 00	TDR: 000000538207
FILE: \MGA\00000\659	REVISED: 10:14:19 04/30/2010	
MTL: -	BY: RAGRA	

BALDOR

CONN DIAG - STANDARD 9 LEAD, Y CONNECTED

SH 1 of 1