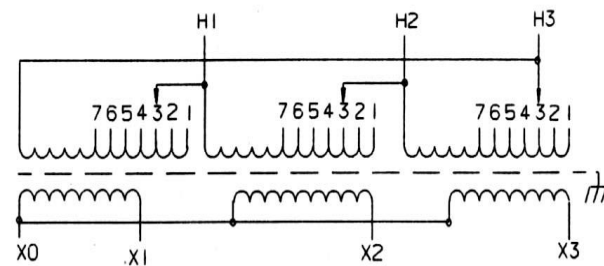
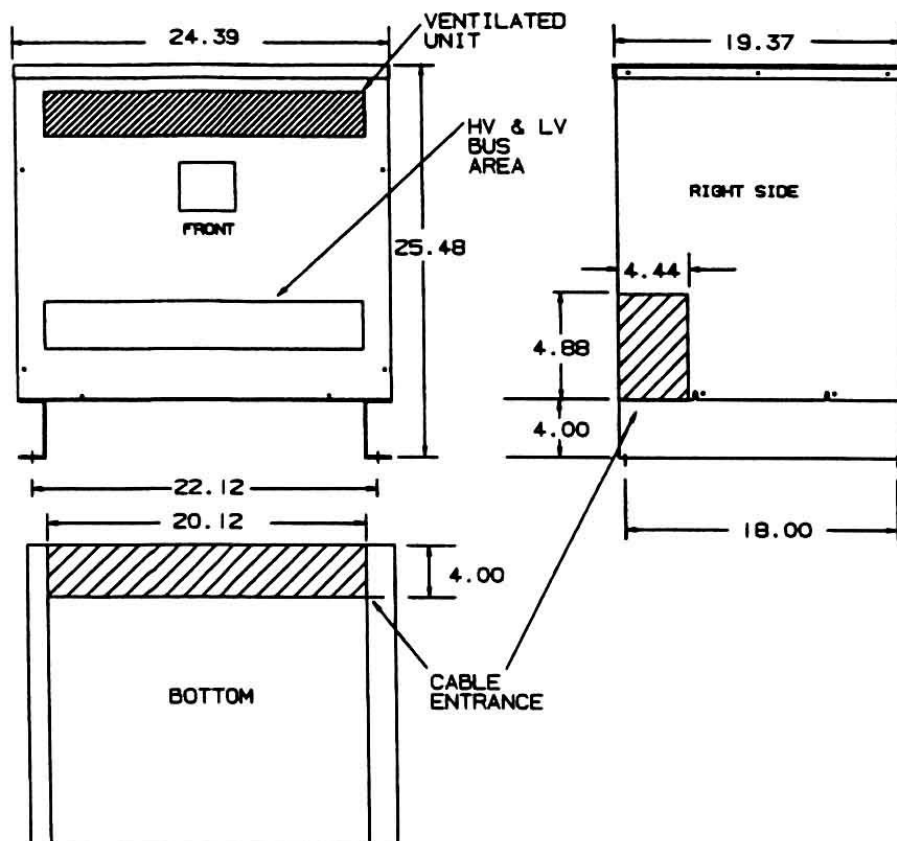
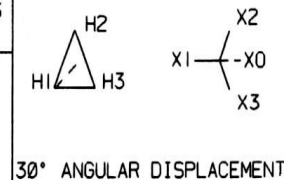


Revisions



PRIMARY VOLTS	%	CONNECT LEADS TO TAP NO.
504	105	1
492	102.5	2
480	100	3
468	97.5	4
456	95	5
444	92.5	6
432	90	7



PRIMARY LINES TO H1-H2-H3
SECONDARY LINES TO X0-X1-X2-X3

NOTE: PRIMARY AND SECONDARY BUS AREA IN FRONT OF CASE.

KEY: DENOTES CONDUIT AREAS

KVA	CATALOG NUMBER	VOLTAGE		WEATHER SHIELD	WEIGHT	PHASE	FREQ.
		HIGH	LOW				
45	TP-53313-3S	480Δ	208Y/120	WS-A-1	383 Lbs	3φ	60 Hz

Winding Rise:	150°C
Insulation:	220°C
Sound Level:	45db

TYPICAL PERFORMANCE DATA

Regulation @ 100% PF:	3.98%
Standards:	TP-1

Windings:	AL
Impedance:	5.71%

Typical Efficiency:	97.75%
No Load Losses:	202 W
Full Load Losses:	1,926 W

Meets TP-2002 Efficiency

Control
7

MX



Type No.

Weather Shield – WS-A-1

DRAWN:

DATE: November 26, 2012

CASE 1