

BALDOR® • RELIANCE 

Product Information Packet

UCC10150

10-15HP,3450RPM,1PH,60HZ,215Z,3740C,OPEN

Part Detail							
Revision:	AL	Status:	PRD/A	Change #:		Proprietary:	No
Type:	AC	Elec. Spec:	37WGW977	CD Diagram:	CD0127	Mfg Plant:	
Mech. Spec:	37E764	Layout:	37LYE764	Poles:	02	Created Date:	
Base:	RG	Eff. Date:	02-28-2017	Leads:	2#8 A PH,2#14 B PH 32" LG		Y

Specs			
Catalog Number:	UCC10150	Inverter Code:	Not Inverter
Enclosure:	OPEN	KVA Code:	C
Frame:	215Z	Lifting Lugs:	Standard Lifting Lugs
Frame Material:	Steel	Locked Bearing Indicator:	Locked Bearing
Output @ Frequency:	15.000 HP @ 60 HZ	Motor Lead Quantity/Wire Size:	2 @ 8 AWG, A PH
	10.000 HP @ 60 HZ	Motor Lead Exit:	Pipe Or Pipe Adaptor
Synchronous Speed @ Frequency:	3600 RPM @ 60 HZ	Motor Lead Termination:	Flying Leads
Voltage @ Frequency:	230.0 V @ 60 HZ	Motor Type:	3740C
XP Class and Group:	None	Mounting Arrangement:	F1
XP Division:	Not Applicable	Power Factor:	98
Agency Approvals:	UR	Product Family:	General Purpose
	CSA	Product Type:	FARM DUTY
Auxillary Box:	No Auxillary Box	Pulley End Bearing Type:	Sealed Bearing
Auxillary Box Lead Termination:	None	Pulley Face Code:	Standard
Base Indicator:	Rigid	Pulley Shaft Indicator:	Tapped & Key
Bearing Grease Type:	Polyrex EM (-20F +300F)	Rodent Screen:	Included
Blower:	None	Shaft Extension Location:	Pulley End
Current @ Voltage:	41.000 A @ 230.0 V	Shaft Ground Indicator:	No Shaft Grounding

Design Code:	-	Shaft Rotation:	Reversible
Drip Cover:	No Drip Cover	Shaft Slinger Indicator:	No Slinger
Duty Rating:	CONT	Speed Code:	Single Speed
Electrically Isolated Bearing:	Not Electrically Isolated	Motor Standards:	NEMA
Feedback Device:	NO FEEDBACK	Starting Method:	Direct on line
Front Face Code:	Standard	Thermal Device - Bearing:	NONE (OLD)
Front Shaft Indicator:	None	Thermal Device - Winding:	Normally Closed Thermostat
Heater Indicator:	No Heater	Vibration Sensor Indicator:	No Vibration Sensor
Insulation Class:	F	Winding Thermal 1:	None
		Winding Thermal 2:	None

Nameplate NP1279L										
CAT.NO.	UCC10150									
SPEC.	37E764W977									
HP	10-15 AIR OVER									
VOLTS	230									
AMP	41-57									
RPM	3450									
FRAME	215Z			HZ	60		PH	1		
SER.F.	1.00			CODE	C		DES	-		
NEMA-NOM-EFF	83			PF	98		CL	F		
RATING	40C AMB-CONT									
CC	USABLE AT 208V									
DE	6307			ODE	6206					
ENCL	OPEN			SN						

Nameplate NP1263L	
CAT.NO.	UCC10150
SPEC.	37E764W977
HP	10-15 AIR OVER
VOLTS	230
AMP	41-57
RPM	3450
FRAME	215Z
HZ	60
PH	1
SER.F.	1.00
CODE	C
DES	-
CL	F
NEMA-NOM-EFF	83
PF	98
RATING	40C AMB-CONT
CC	USABLE AT 208V
DE	6307
ODE	6206
ENCL	OPEN
SN	

Parts List		
Part Number	Description	Quantity
SA031064	SA 37E764W977	1.000 EA
RA027103	RA 37E764W977	1.000 EA
OC5000A	OIL CAP.ASSY FOR 37E764W977, 3 OIL CAP'S	1.000 EA
HW3200A01	3/8-16X3/4 I-BLT WELDED F/S	1.000 EA
HA6011A01	ADAPTOR, MACH	1.000 EA
36GS5001	GASKET CONDUIT ADAPTOR	1.000 EA
51XF2520A10	SCREW, HEX SER SLT HD, ZN, 1/4-20 X .62	2.000 EA
11XW1032G06	10-32 X .38, TAPTITE II, HEX WSHR SLTD U	1.000 EA
HW3001B01	BRASS CUP WASHER, FOR #10 SCREW	1.000 EA
37EP3203C00	MASTER,ODE,206 BRG,2 GREASERS	1.000 EA
HA1104A01	RODENT SCREEN 37 FRAME 206 BRG FRONT END	1.000 EA
51XW1032A06	10-32 X .38, TAPTITE II, HEX WSHR SLTD S	4.000 EA
HW1000A10	#10 FLAT WASHER (SAE)	2.000 EA
HW1000A10	#10 FLAT WASHER (SAE)	4.000 EA
HW4500A19	1/4-28X1/4 SLOTTED PLUG F/S	2.000 EA
HW5100A06	W2420-025 WVY WSHR (WB)	1.000 EA
37EP3204C00	MASTER,DE,307 BRG,2 GREASERS,LOCKED BEAR	1.000 EA
HA1104A05	RODENT SCREEN 37 FRAME 207 BRG PULLEY EN	1.000 EA
51XW1032A06	10-32 X .38, TAPTITE II, HEX WSHR SLTD S	2.000 EA
HW4500A19	1/4-28X1/4 SLOTTED PLUG F/S	2.000 EA
10XN2520A28	1/4-20X 1 3/4 HEX HD	4.000 EA
HW1001A25	LOCKWASHER 1/4, ZINC PLT .493 OD, .255 I	4.000 EA
XY3118A12	5/16-18 HEX NUT DIRECTIONAL SERRATION	4.000 EA
HW2501E26	KEY, 1/4 SQ X 3.000	1.000 EA

Parts List (continued)		
Part Number	Description	Quantity
HA7000A02	KEY RETAINER RING, 1 1/8 DIA, 1 3/8 DIA	1.000 EA
85XU0407S04	4X1/4 U DRIVE PIN STAINLESS	2.000 EA
MJ1000A02	GREASE, POLYREX EM EXXON (USe 4824-15A)	0.050 LB
MG1025C02	WILKOFASST SG, 787.105, TAN	0.028 GA
LB1115N	LABEL,LIFTING DEVICE (ON ROLLS)	1.000 EA
LD5000A34	LEAD ASSY, ML1400DF08 W/#10 RING 12"	1.000 EA
HA3104A17	5/16-18X13.250 T-BLT/OHIO	4.000 EA
MP1002A24	6" X 16" .65 MIL. CLEAR PLASTIC BAG	1.000 EA
LB1119N	WARNING LABEL	1.000 EA
LB1001	LABEL, GREASE-EXXON POLYREX EM	1.000 EA
LC0127	CONNECTION DIAGRAM	1.000 EA
NP1279L	ALUM FARM DUTY UL CSA CC	1.000 EA
NP1263L	AUX, GP, ALUM, CC, LASER ETCHED	1.000 EA
36PA1001	PKG GRP, PRINT PK1017A06	1.000 EA
MN416A01	TAG-INSTAL-MAINT no wire (1200/bx) 5/18	1.000 EA
PE-0000001	ZRTG PE ASSEMBLY	1.000 EA
FE-0000001	ZRTG FE ASSEMBLY	1.000 EA

Accessories		
Part Number	Description	Multiplier
37-1404	C FACE KIT	A8

AC Induction Motor Performance Data

Record # 11959 - Typical performance - not guaranteed values

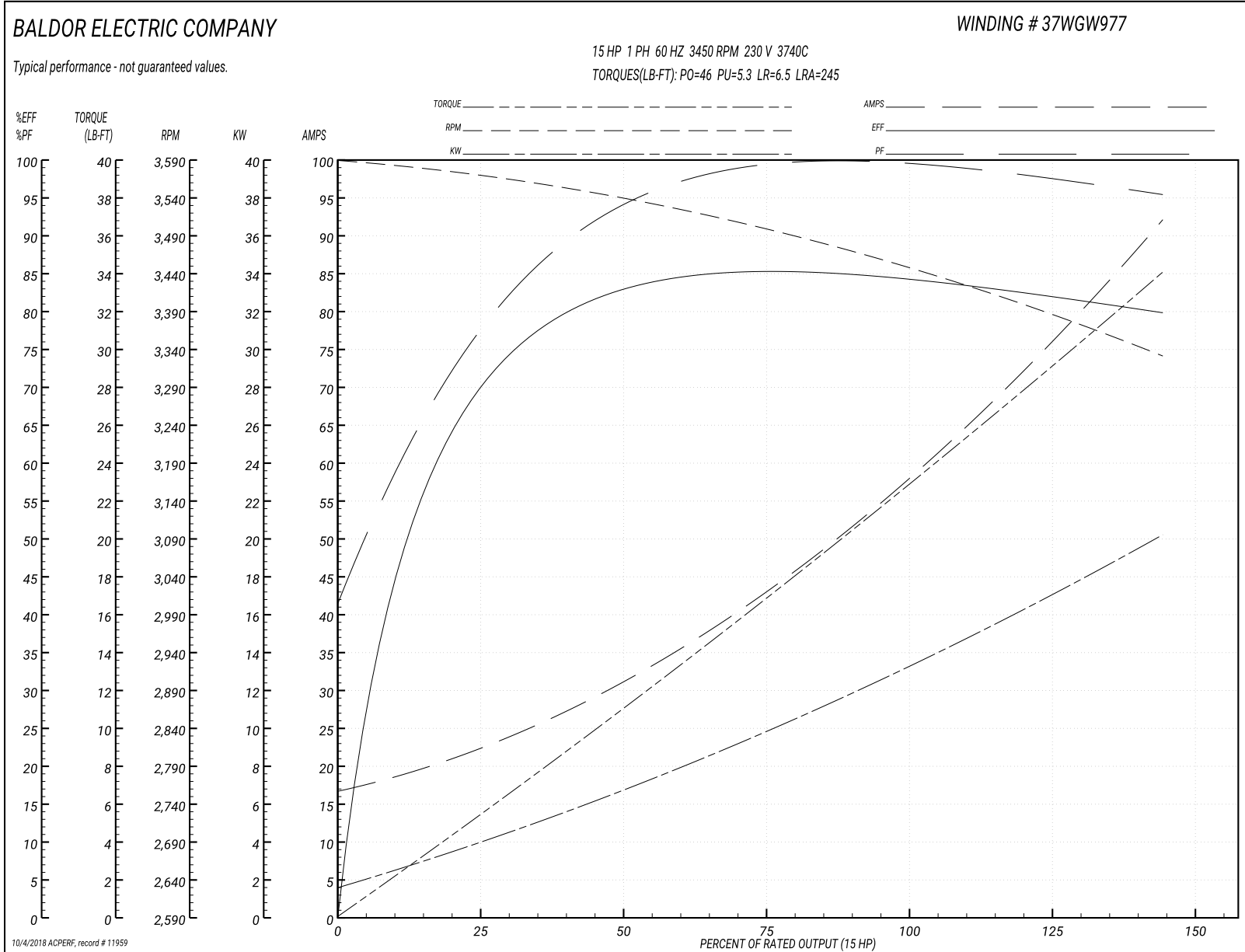
Winding: 37WGW977-R001	Type: 3740C	Enclosure: OPAO
-------------------------------	--------------------	------------------------

Nameplate Data				230 V, 60 Hz: Single Voltage Motor	
Rated Output (HP)	10-15 AIR OVER			Full Load Torque	22.8 LB-FT
Volts	230			Start Configuration	direct on line
Full Load Amps	41-57			Breakdown Torque	46 LB-FT
R.P.M.	3450			Pull-up Torque	5.3 LB-FT
Hz	60	Phase	1	Locked-rotor Torque	6.5 LB-FT
NEMA Design Code	-	KVA Code	C	Starting Current	245 A
Service Factor (S.F.)	1			No-load Current	16.3 A
NEMA Nom. Eff.	83	Power Factor	98	Line-line Res. @ 25°C	0.196 Ω A Ph 0.344 Ω B Ph
Rating - Duty	40C AMB-CONT			Temp. Rise @ Rated Load	

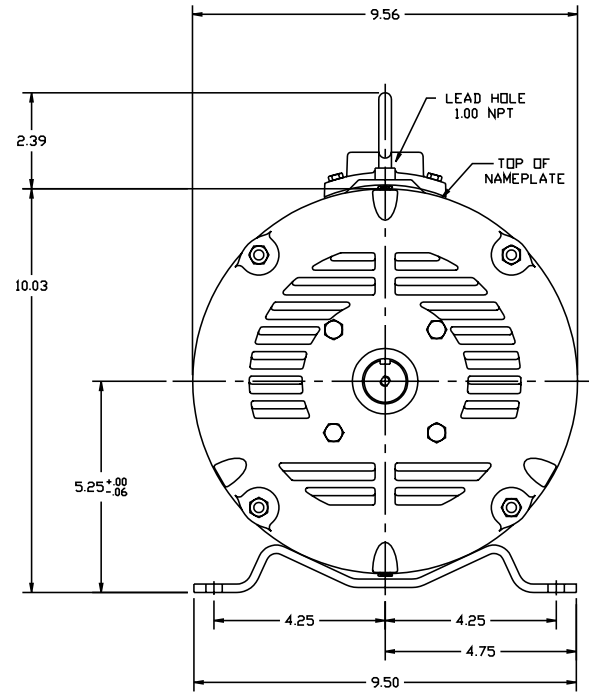
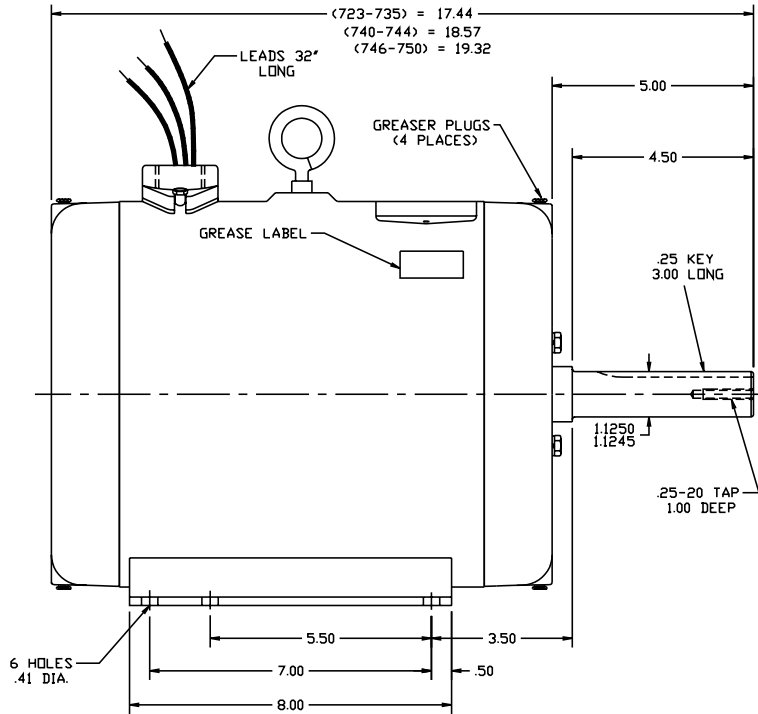
Load Characteristics 230 V, 60 Hz, 15 HP

% of Rated Load	25	50	75	100	125	150
Power Factor	78	92	98	99	99	99
Efficiency	68.7	81.5	85.1	85.2	83.2	79.1
Speed	3565	3533	3496	3453	3400	3324
Line amperes	22.7	32.4	43.9	57.4	73.1	93.2

Performance Graph at 230V, 60Hz, 15.0HP Typical performance - Not guaranteed values



37E764



UNIVERSAL CROP DRYER MOTOR

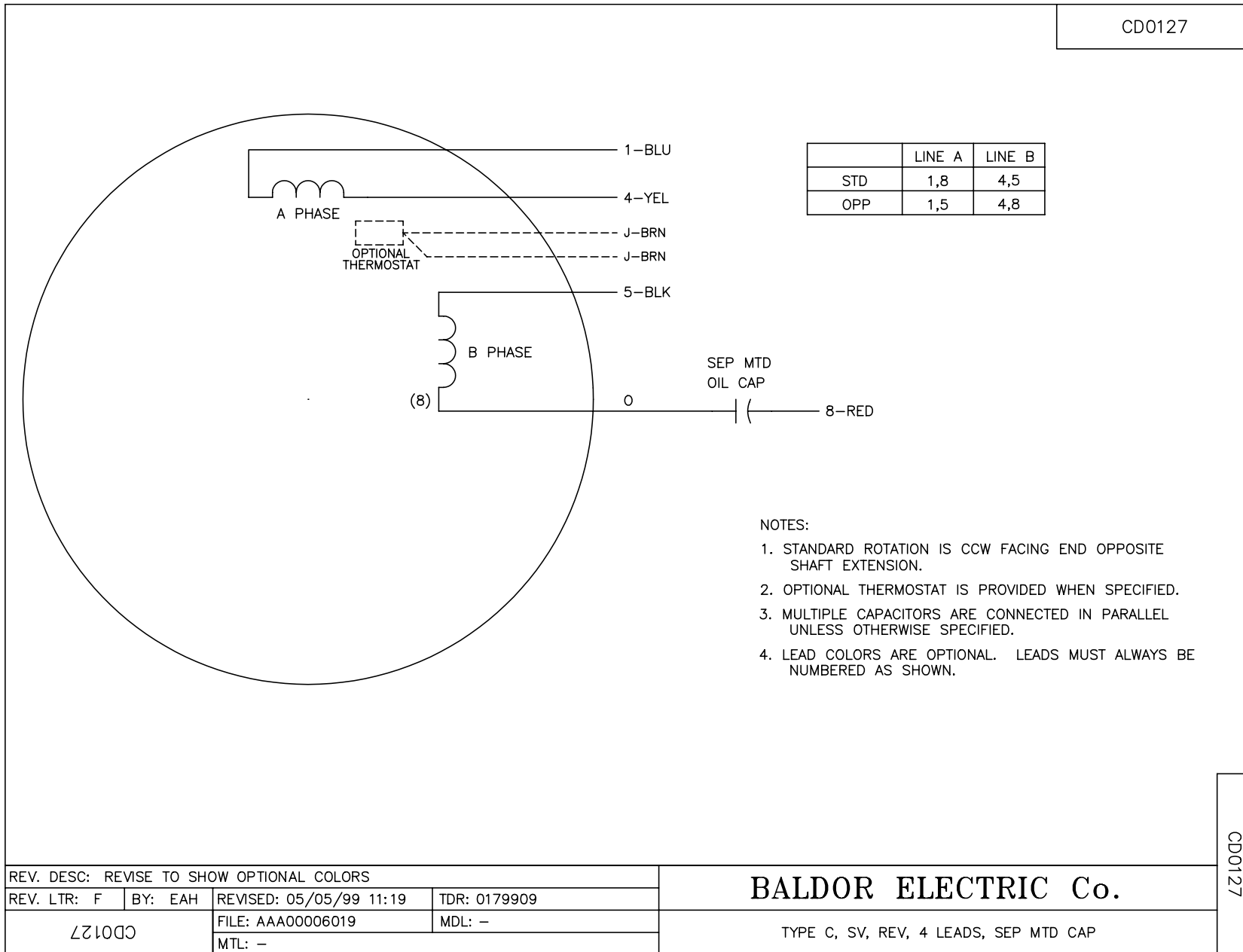
BALDOR ELECTRIC Co.

CUST. NAME	CUST. P.O.				REMARKS:	
MODEL	INSUL	AMB	H.P.	MTG	REV: K	37SB0442 WAS 37SB0251, HA6011A01 WAS HA6021A01.
R.P.M.	VOLTS	ENCL	PHASE	FREQ	SCALE: .4	BY: BLP
FRAME	TYPE	CERTIFIED BY		FILE: AAA00010074	REVISED: 10/10/94	TDR: 0063266

SPL HORZ OPEN 37C 213-5Z W/PIPE ADAPTER & T-STATS

37E764

CD0127



REV. DESC: REVISE TO SHOW OPTIONAL COLORS			
REV. LTR: F	BY: EAH	REVISED: 05/05/99 11:19	TDR: 0179909
CD0127		FILE: AAA00006019	MDL: -
		MTL: -	

BALDOR ELECTRIC Co.

TYPE C, SV, REV, 4 LEADS, SEP MTD CAP

CD0127