

**BALDOR® • RELIANCE** 

**Product Information Packet**

**UCME153**

**1.5-3HP,3450RPM,3PH,60HZ,143TYZ,3524M,TE**

Part Detail							
Revision:	L	Status:	PRD/A	Change #:		Proprietary:	No
Type:	AC	Elec. Spec:	35WGS057	CD Diagram:	CD0005	Mfg Plant:	
Mech. Spec:	35E2501	Layout:	35LYE2501	Poles:	02	Created Date:	03-05-2014
Base:	RG	Eff. Date:	09-25-2018	Leads:	9#18		

Specs			
Catalog Number:	UCME153	Insulation Class:	F
Enclosure:	TEAO	Inverter Code:	Not Inverter
Frame:	145TYZ	KVA Code:	L
Frame Material:	Steel	Lifting Lugs:	No Lifting Lugs
Output @ Frequency:	1.500 HP @ 60 HZ	Locked Bearing Indicator:	Locked Bearing
	3.000 HP @ 60 HZ	Motor Lead Quantity/Wire Size:	9 @ 18 AWG
Synchronous Speed @ Frequency:	3600 RPM @ 60 HZ	Motor Lead Exit:	Pipe Or Pipe Adaptor
Voltage @ Frequency:	460.0 V @ 60 HZ	Motor Lead Termination:	Flying Leads
	230.0 V @ 60 HZ	Motor Type:	3524M
	208.0 V @ 60 HZ	Mounting Arrangement:	F1
XP Class and Group:	None	Power Factor:	83
XP Division:	Not Applicable	Product Family:	General Purpose
Agency Approvals:	CSA	Product Type:	FARM DUTY
	UR	Pulley End Bearing Type:	Sealed Bearing
Auxillary Box:	No Auxillary Box	Pulley Face Code:	Standard
Auxillary Box Lead Termination:	None	Pulley Shaft Indicator:	Tapped & Key
Base Indicator:	Rigid	Rodent Screen:	None
Bearing Grease Type:	Polyrex EM (-20F +300F)	RoHS Status:	ROHS COMPLIANT

<b>Blower:</b>	None	<b>Shaft Extension Location:</b>	Pulley End
<b>Current @ Voltage:</b>	8.500 A @ 208.0 V	<b>Shaft Ground Indicator:</b>	No Shaft Grounding
	8.200 A @ 230.0 V	<b>Shaft Rotation:</b>	Reversible
	4.100 A @ 460.0 V	<b>Shaft Slinger Indicator:</b>	No Slinger
<b>Design Code:</b>	B	<b>Speed Code:</b>	Single Speed
<b>Drip Cover:</b>	No Drip Cover	<b>Motor Standards:</b>	NEMA
<b>Duty Rating:</b>	CONT	<b>Starting Method:</b>	Direct on line
<b>Electrically Isolated Bearing:</b>	Not Electrically Isolated	<b>Thermal Device - Bearing:</b>	NONE (OLD)
<b>Feedback Device:</b>	NO FEEDBACK	<b>Thermal Device - Winding:</b>	Normally Closed Thermostat
<b>Front Face Code:</b>	Standard	<b>Vibration Sensor Indicator:</b>	No Vibration Sensor
<b>Front Shaft Indicator:</b>	None	<b>Winding Thermal 1:</b>	None
<b>Heater Indicator:</b>	No Heater	<b>Winding Thermal 2:</b>	None

<b>Nameplate NP1279L</b>										
<b>CAT.NO.</b>	UCME153									
<b>SPEC.</b>	35E2501S057G1									
<b>HP</b>	1.5-3									
<b>VOLTS</b>	208-230/460									
<b>AMP</b>	8.5-8.2/4.1									
<b>RPM</b>	3450									
<b>FRAME</b>	145TYZ			<b>HZ</b>	60			<b>PH</b>	3	
<b>SER.F.</b>	1.00			<b>CODE</b>	L		<b>DES</b>	B	<b>CL</b>	F
<b>NEMA-NOM-EFF</b>	80			<b>PF</b>	83					
<b>RATING</b>	40C AMB-CONT									
<b>CC</b>							<b>USABLE AT 208V</b>	8.5		
<b>DE</b>	6206			<b>ODE</b>	6203					
<b>ENCL</b>	TEAO			<b>SN</b>						

<b>Nameplate NP1263L</b>	
<b>CAT.NO.</b>	UCME153
<b>SPEC.</b>	35E2501S057G1
<b>HP</b>	1.5-3
<b>VOLTS</b>	208-230/460
<b>AMP</b>	8.5-8.2/4.1
<b>RPM</b>	3450
<b>FRAME</b>	145TYZ
<b>SER.F.</b>	1.00
<b>NEMA-NOM-EFF</b>	80
<b>RATING</b>	40C AMB-CONT
<b>CC</b>	
<b>DE</b>	6206
<b>ENCL</b>	TEAO
<b>CODE</b>	L
<b>PF</b>	83
<b>ODE</b>	6203
<b>SN</b>	
<b>HZ</b>	60
<b>DES</b>	B
<b>CL</b>	F
<b>PH</b>	3
<b>USABLE AT 208V</b>	8.5

Parts List		
Part Number	Description	Quantity
SA277856	SA 35E2501S057G1	1.000 EA
RA264404	RA 35E2501S057G1	1.000 EA
HA6021A01SP	ADAPTOR, MACH	1.000 EA
36GS5000	GASKET CONDUIT ADAPTOR	1.000 EA
51XB1016A08	10-16X 1/2HXWSSLD SERTYB	2.000 EA
11XW1032G06	10-32 X .38, TAPTITE II, HEX WSHR SLTD U	1.000 EA
35EP3122F00	MASTER ODE,203 BRG,#26 DRN	1.000 EA
HW5100A03	WAVY WASHER (W1543-017)	1.000 EA
10XN2520A24	1/4-20X 1 1/2 HEX HD X	2.000 EA
HW1001A25	LOCKWASHER 1/4, ZINC PLT .493 OD, .255 I	2.000 EA
35EP3113B06	PU EP ENCL,06 BRG, SEAL, W/O GREASER	1.000 EA
HW4600B50SP	SEAL 1.156 X 1.874 X 0.250 SINGLE LIP DB	1.000 EA
HW4600B36SP	V-RING SLINGER 1.188 X 1.690 X .24 VITON	1.000 EA
XY1032A02	10-32 HEX NUT DIRECTIONAL SERRATION	4.000 EA
HW2501D13	KEY, 3/16 SQ X 1.375	1.000 EA
HA7000A01	KEY RETAINER 7/8" DIA SHAFT	1.000 EA
85XU0407S04	4X1/4 U DRIVE PIN STAINLESS	2.000 EA
MJ5001A27	32220KN GRAY SEALER *MIN BUY 4 QTS=1GAL	0.001 QT
LD5000B01	LEAD ASSY, ML1400DF18 W/#10 RING 36"	1.000 EA
MG1025C02	WILKOFASST SG, 787.105, TAN	0.017 GA
HA3100A20	THRUBOLT 10-32 X 9.812	4.000 EA
LC0145B01	CONNECTION LABEL	1.000 EA
LB1119N	WARNING LABEL	1.000 EA
MN416A01	TAG-INSTAL-MAINT no wire (1200/bx) 5/18	1.000 EA

<b>Parts List (continued)</b>		
<b>Part Number</b>	<b>Description</b>	<b>Quantity</b>
NP1279L	ALUM FARM DUTY UL CSA CC	1.000 EA
NP1263L	AUX, GP, ALUM, CC, LASER ETCHED	1.000 EA
36PA1000	PKG GRP, PRINT PK1016A06	1.000 EA
FE-0000001	ZRTG FE ASSEMBLY	1.000 EA

<b>Accessories</b>		
<b>Part Number</b>	<b>Description</b>	<b>Multiplier</b>
35-1325	C FACE KIT	A8



**AC Induction Motor Performance Data**

Record # 8899 - Typical performance - not guaranteed values

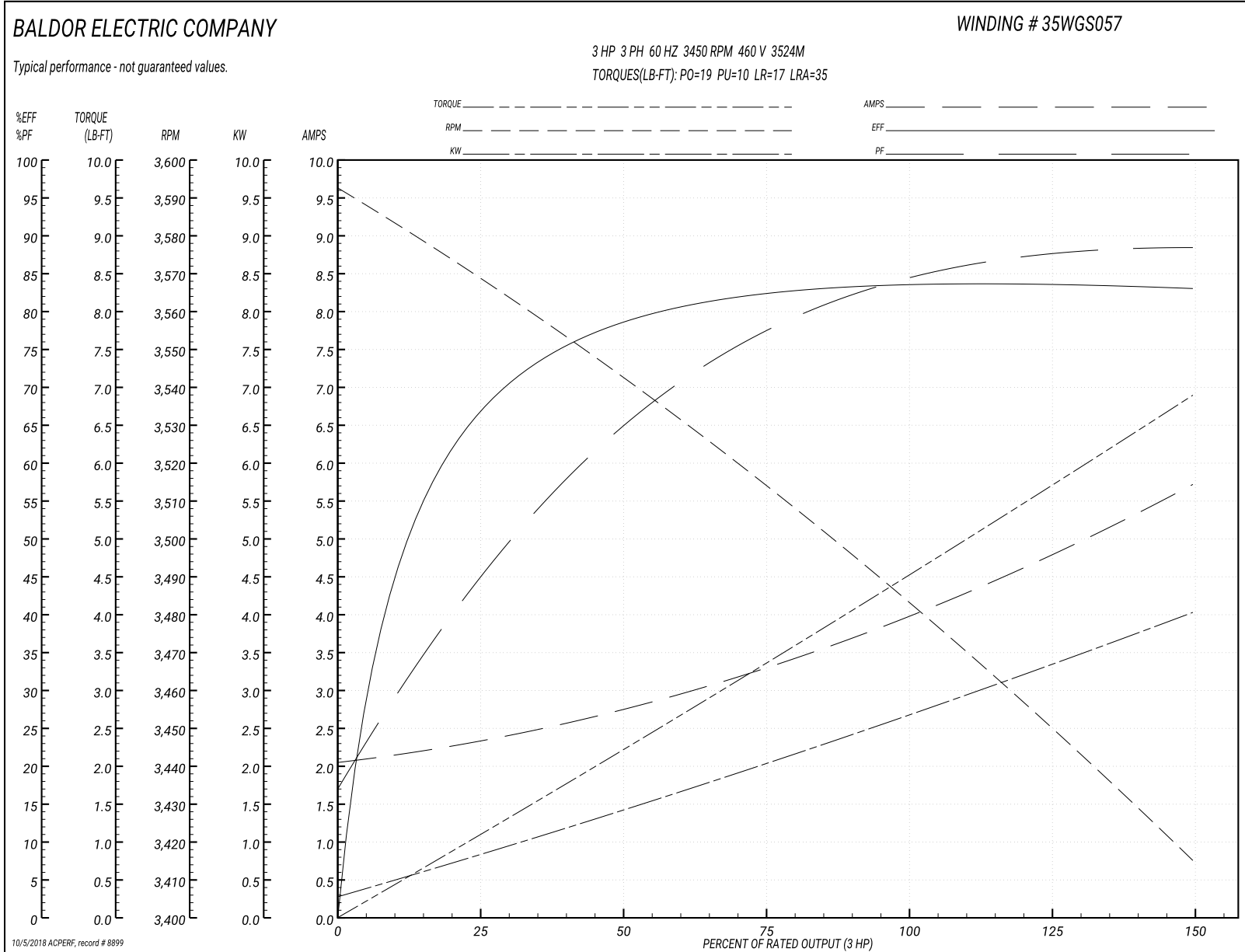
<b>Winding:</b> 35WGS057-R001	<b>Type:</b> 3524M	<b>Enclosure:</b> OPAO
-------------------------------	--------------------	------------------------

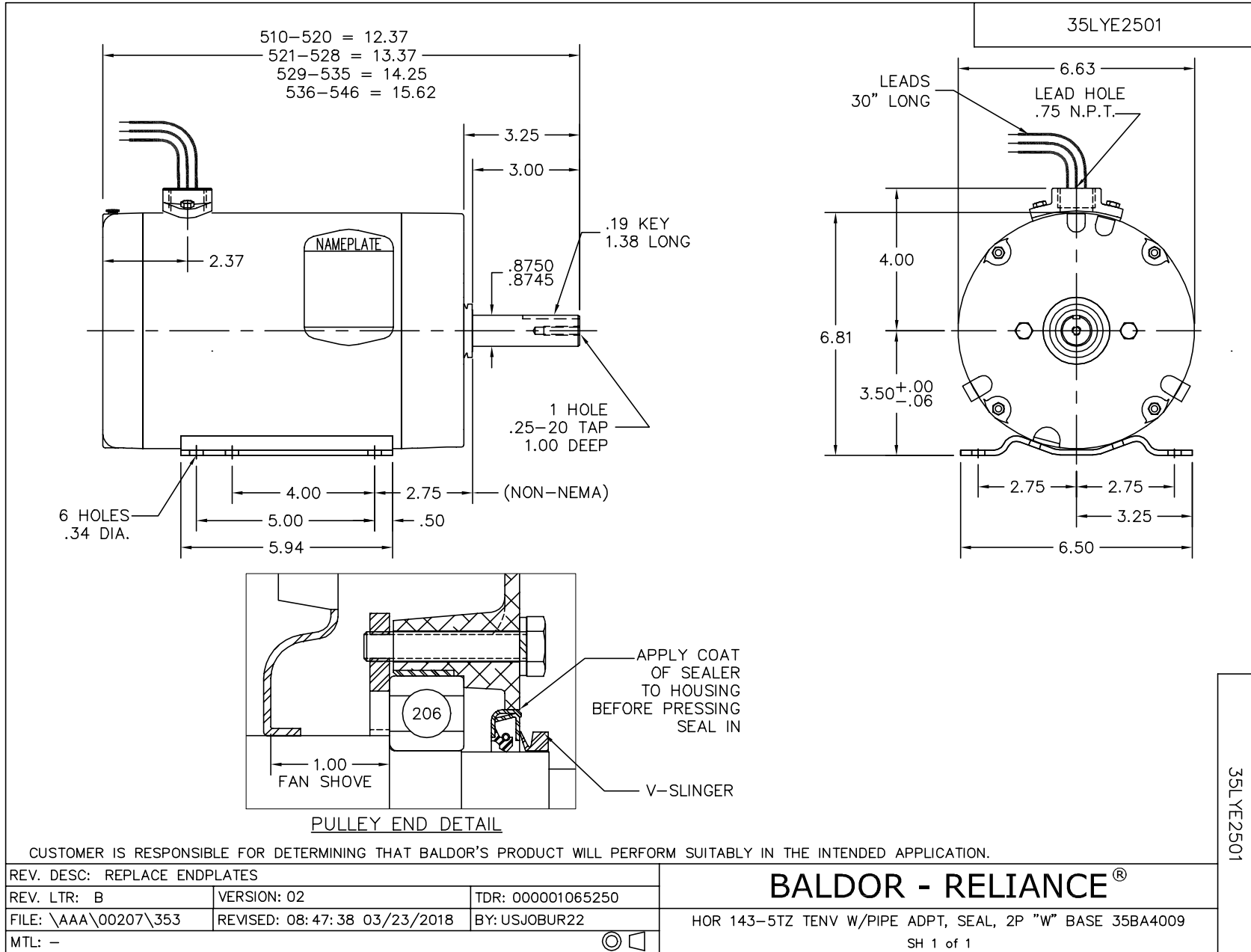
Nameplate Data				460 V, 60 Hz: High Voltage Connection	
Rated Output (HP)	1.5-3			Full Load Torque	4.6 LB-FT
Volts	208-230/460			Start Configuration	direct on line
Full Load Amps	8.5-8.2/4.1			Breakdown Torque	19 LB-FT
R.P.M.	3450			Pull-up Torque	10 LB-FT
Hz	60	Phase	3	Locked-rotor Torque	17 LB-FT
NEMA Design Code	B	KVA Code	L	Starting Current	35 A
Service Factor (S.F.)	1			No-load Current	2.1 A
NEMA Nom. Eff.	80	Power Factor	83	Line-line Res. @ 25°C	4.81 Ω
Rating - Duty	40C AMB-CONT			Temp. Rise @ Rated Load	

Load Characteristics 460 V, 60 Hz, 3 HP

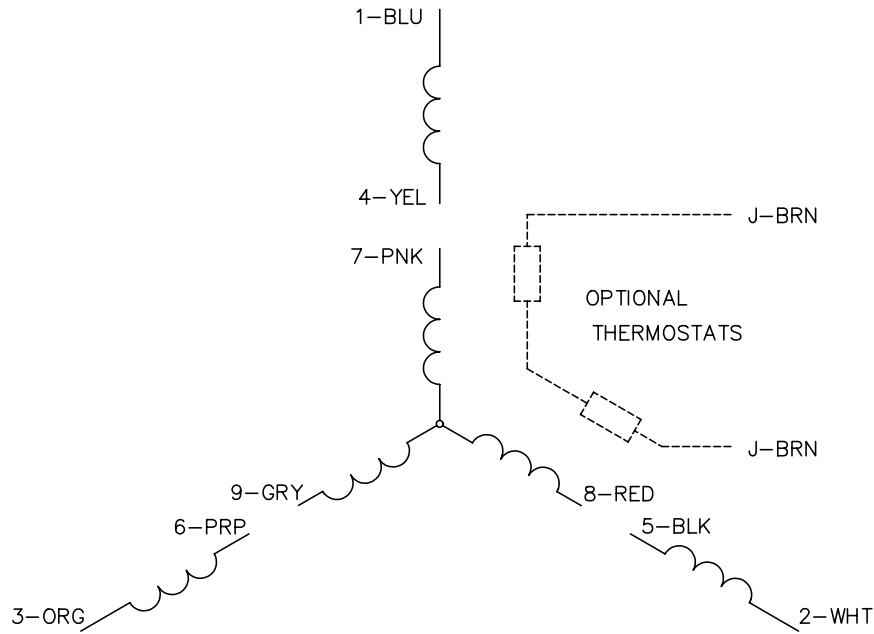
% of Rated Load	25	50	75	100	125	150
Power Factor	46	66	77	83	86	89
Efficiency	66.6	78.6	83	83.8	83.5	83
Speed	3567	3541	3512	3481	3449	3415
Line amperes	2.3	2.7	3.4	4.1	4.8	5.7

Performance Graph at 460V, 60Hz, 3.0HP Typical performance - Not guaranteed values

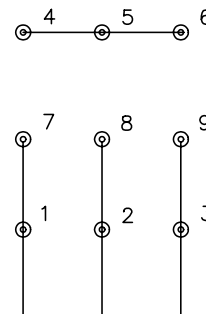




CD0005

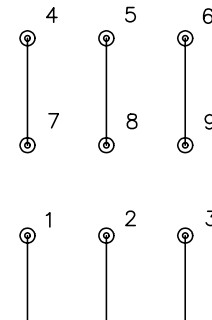


LOW VOLTAGE  
(2Y)



LINE

HIGH VOLTAGE  
(1Y)



LINE

NOTES:

1. INTERCHANGE ANY TWO LINE LEADS TO REVERSE ROTATION.
2. OPTIONAL THERMOSTATS ARE PROVIDED WHEN SPECIFIED.
3. ACTUAL NUMBER OF INTERNAL PARALLEL CIRCUITS MAY BE A MULTIPLE OF THOSE SHOWN ABOVE.
4. LEAD COLORS ARE OPTIONAL. LEADS MUST ALWAYS BE NUMBERED AS SHOWN.

REV. DESC: REVISE TO SHOW OPTIONAL COLORS			
REV. LTR: E	BY: JLP	REVISED: 01/19/99 10:15	TDR: 0171435
900000		FILE: AAA00005140	MDL: -
		MTL: -	

**BALDOR ELECTRIC Co.**

3PH, DV, 9 LEADS

CD0005