

**BALDOR® • RELIANCE** 

**Product Information Packet**

**UCME3145**

**3-4.5HP,3450RPM,3PH,60HZ,143TYZ,3528M,TE**

| Part Detail |         |             |            |             |        |               |            |
|-------------|---------|-------------|------------|-------------|--------|---------------|------------|
| Revision:   | J       | Status:     | PRD/A      | Change #:   |        | Proprietary:  | No         |
| Type:       | AC      | Elec. Spec: | 35WGS055   | CD Diagram: | CD0005 | Mfg Plant:    |            |
| Mech. Spec: | 35E2501 | Layout:     | 35LYE2501  | Poles:      | 02     | Created Date: | 03-04-2014 |
| Base:       | RG      | Eff. Date:  | 07-19-2018 | Leads:      | 9#18   |               |            |

| Specs                           |                         |                                |                      |
|---------------------------------|-------------------------|--------------------------------|----------------------|
| Catalog Number:                 | UCME3145                | Heater Indicator:              | No Heater            |
| Enclosure:                      | TEAO                    | Insulation Class:              | H                    |
| Frame:                          | 143TYZ                  | Inverter Code:                 | Not Inverter         |
| Frame Material:                 | Steel                   | KVA Code:                      | K                    |
| Output @ Frequency:             | 3.000 HP @ 60 HZ        | Lifting Lugs:                  | No Lifting Lugs      |
|                                 | 4.500 HP @ 60 HZ        | Locked Bearing Indicator:      | Locked Bearing       |
| Synchronous Speed @ Frequency:  | 3600 RPM @ 60 HZ        | Motor Lead Quantity/Wire Size: | 9 @ 18 AWG           |
| Voltage @ Frequency:            | 460.0 V @ 60 HZ         | Motor Lead Exit:               | Pipe Or Pipe Adaptor |
|                                 | 230.0 V @ 60 HZ         | Motor Lead Termination:        | Flying Leads         |
|                                 | 208.0 V @ 60 HZ         | Motor Type:                    | 3528M                |
| XP Class and Group:             | None                    | Mounting Arrangement:          | F1                   |
| XP Division:                    | Not Applicable          | Product Family:                | General Purpose      |
| Agency Approvals:               | CSA                     | Product Type:                  | FARM DUTY            |
|                                 | UR                      | Pulley End Bearing Type:       | Sealed Bearing       |
| Auxillary Box:                  | No Auxillary Box        | Pulley Face Code:              | Standard             |
| Auxillary Box Lead Termination: | None                    | Pulley Shaft Indicator:        | Tapped & Key         |
| Base Indicator:                 | Rigid                   | Rodent Screen:                 | None                 |
| Bearing Grease Type:            | Polyrex EM (-20F +300F) | RoHS Status:                   | ROHS COMPLIANT       |

|                                       |                           |                                    |                            |
|---------------------------------------|---------------------------|------------------------------------|----------------------------|
| <b>Blower:</b>                        | None                      | <b>Shaft Extension Location:</b>   | Pulley End                 |
| <b>Current @ Voltage:</b>             | 6.000 A @ 460.0 V         | <b>Shaft Ground Indicator:</b>     | No Shaft Grounding         |
|                                       | 13.000 A @ 208.0 V        | <b>Shaft Rotation:</b>             | Reversible                 |
|                                       | 12.000 A @ 230.0 V        | <b>Shaft Slinger Indicator:</b>    | No Slinger                 |
| <b>Design Code:</b>                   | B                         | <b>Speed Code:</b>                 | Single Speed               |
| <b>Drip Cover:</b>                    | No Drip Cover             | <b>Motor Standards:</b>            | NEMA                       |
| <b>Duty Rating:</b>                   | CONT                      | <b>Starting Method:</b>            | Direct on line             |
| <b>Electrically Isolated Bearing:</b> | Not Electrically Isolated | <b>Thermal Device - Bearing:</b>   | NONE (OLD)                 |
| <b>Feedback Device:</b>               | NO FEEDBACK               | <b>Thermal Device - Winding:</b>   | Normally Closed Thermostat |
| <b>Front Face Code:</b>               | Standard                  | <b>Vibration Sensor Indicator:</b> | No Vibration Sensor        |
| <b>Front Shaft Indicator:</b>         | None                      | <b>Winding Thermal 1:</b>          | None                       |
|                                       |                           | <b>Winding Thermal 2:</b>          | None                       |

|                          |               |  |             |            |      |                       |           |   |           |   |
|--------------------------|---------------|--|-------------|------------|------|-----------------------|-----------|---|-----------|---|
| <b>Nameplate NP1279L</b> |               |  |             |            |      |                       |           |   |           |   |
| <b>CAT.NO.</b>           | UCME3145      |  |             |            |      |                       |           |   |           |   |
| <b>SPEC.</b>             | 35E2501S055G1 |  |             |            |      |                       |           |   |           |   |
| <b>HP</b>                | 3-4.5         |  |             |            |      |                       |           |   |           |   |
| <b>VOLTS</b>             | 208-230/460   |  |             |            |      |                       |           |   |           |   |
| <b>AMP</b>               | 13-12/6       |  |             |            |      |                       |           |   |           |   |
| <b>RPM</b>               | 3450          |  |             |            |      |                       |           |   |           |   |
| <b>FRAME</b>             | 143TYZ        |  |             | <b>HZ</b>  | 60   |                       | <b>PH</b> | 3 |           |   |
| <b>SER.F.</b>            | 1.00          |  | <b>CODE</b> | K          |      | <b>DES</b>            | B         |   | <b>CL</b> | H |
| <b>NEMA-NOM-EFF</b>      |               |  | <b>PF</b>   |            |      |                       |           |   |           |   |
| <b>RATING</b>            | 40C AMB-CONT  |  |             |            |      |                       |           |   |           |   |
| <b>CC</b>                |               |  |             |            |      | <b>USABLE AT 208V</b> | 13        |   |           |   |
| <b>DE</b>                | 6206          |  |             | <b>ODE</b> | 6203 |                       |           |   |           |   |
| <b>ENCL</b>              | TEAO          |  | <b>SN</b>   |            |      |                       |           |   |           |   |

|                          |               |
|--------------------------|---------------|
| <b>Nameplate NP1263L</b> |               |
| <b>CAT.NO.</b>           | UCME3145      |
| <b>SPEC.</b>             | 35E2501S055G1 |
| <b>HP</b>                | 3-4.5         |
| <b>VOLTS</b>             | 208-230/460   |
| <b>AMP</b>               | 13-12/6       |
| <b>RPM</b>               | 3450          |
| <b>FRAME</b>             | 143TYZ        |
| <b>SER.F.</b>            | 1.00          |
| <b>NEMA-NOM-EFF</b>      |               |
| <b>RATING</b>            | 40C AMB-CONT  |
| <b>CC</b>                |               |
| <b>DE</b>                | 6206          |
| <b>ENCL</b>              | TEAO          |
| <b>CODE</b>              | K             |
| <b>DES</b>               | B             |
| <b>CL</b>                | H             |
| <b>PF</b>                |               |
| <b>ODE</b>               | 6203          |
| <b>SN</b>                |               |
| <b>HZ</b>                | 60            |
| <b>PH</b>                | 3             |
| <b>USABLE AT 208V</b>    | 13            |

| Parts List  |  |          |
|-------------|--|----------|
| Part Number | Description                              | Quantity |
| SA277346    | SA 35E2501S055G1                         | 1.000 EA |
| RA263897    | RA 35E2501S055G1                         | 1.000 EA |
| HA6021A01SP | ADAPTOR, MACH                            | 1.000 EA |
| 36GS5000    | GASKET CONDUIT ADAPTOR                   | 1.000 EA |
| 51XB1016A08 | 10-16X 1/2HXWSSLD SERTYB                 | 2.000 EA |
| 11XW1032G06 | 10-32 X .38, TAPTITE II, HEX WSHR SLTD U | 1.000 EA |
| 35EP3122F00 | MASTER ODE,203 BRG,#26 DRN               | 1.000 EA |
| HW5100A03   | WAVY WASHER (W1543-017)                  | 1.000 EA |
| 10XN2520A24 | 1/4-20X 1 1/2 HEX HD X                   | 2.000 EA |
| HW1001A25   | LOCKWASHER 1/4, ZINC PLT .493 OD, .255 I | 2.000 EA |
| 35EP3113B06 | PU EP ENCL,06 BRG, SEAL, W/O GREASER     | 1.000 EA |
| HW4600B50SP | SEAL 1.156 X 1.874 X 0.250 SINGLE LIP DB | 1.000 EA |
| HW4600B36SP | V-RING SLINGER 1.188 X 1.690 X .24 VITON | 1.000 EA |
| XY1032A02   | 10-32 HEX NUT DIRECTIONAL SERRATION      | 4.000 EA |
| HW2501D13   | KEY, 3/16 SQ X 1.375                     | 1.000 EA |
| HA7000A01   | KEY RETAINER 7/8" DIA SHAFT              | 1.000 EA |
| 85XU0407S04 | 4X1/4 U DRIVE PIN STAINLESS              | 2.000 EA |
| MJ5001A27   | 32220KN GRAY SEALER *MIN BUY 4 QTS=1GAL  | 0.001 QT |
| LD5000B01   | LEAD ASSY, ML1400DF18 W/#10 RING 36"     | 1.000 EA |
| MG1025C02   | WILKOFASST SG, 787.105, TAN              | 0.017 GA |
| HA3100A20   | THRUBOLT 10-32 X 9.812                   | 4.000 EA |
| LC0145B01   | CONNECTION LABEL                         | 1.000 EA |
| LB1119N     | WARNING LABEL                            | 1.000 EA |
| MN416A01    | TAG-INSTAL-MAINT no wire (1200/bx) 5/18  | 1.000 EA |

| <b>Parts List (continued)</b> |                                 |                 |
|-------------------------------|---------------------------------|-----------------|
| <b>Part Number</b>            | <b>Description</b>              | <b>Quantity</b> |
| NP1279L                       | ALUM FARM DUTY UL CSA CC        | 1.000 EA        |
| NP1263L                       | AUX, GP, ALUM, CC, LASER ETCHED | 1.000 EA        |
| 36PA1000                      | PKG GRP, PRINT PK1016A06        | 1.000 EA        |
| FE-0000001                    | ZRTG FE ASSEMBLY                | 1.000 EA        |

| <b>Accessories</b> |                    |                   |
|--------------------|--------------------|-------------------|
| <b>Part Number</b> | <b>Description</b> | <b>Multiplier</b> |
| 35-1325            | C FACE KIT         | A8                |



**AC Induction Motor Performance Data**  
Record # 8898 - Typical performance - not guaranteed values

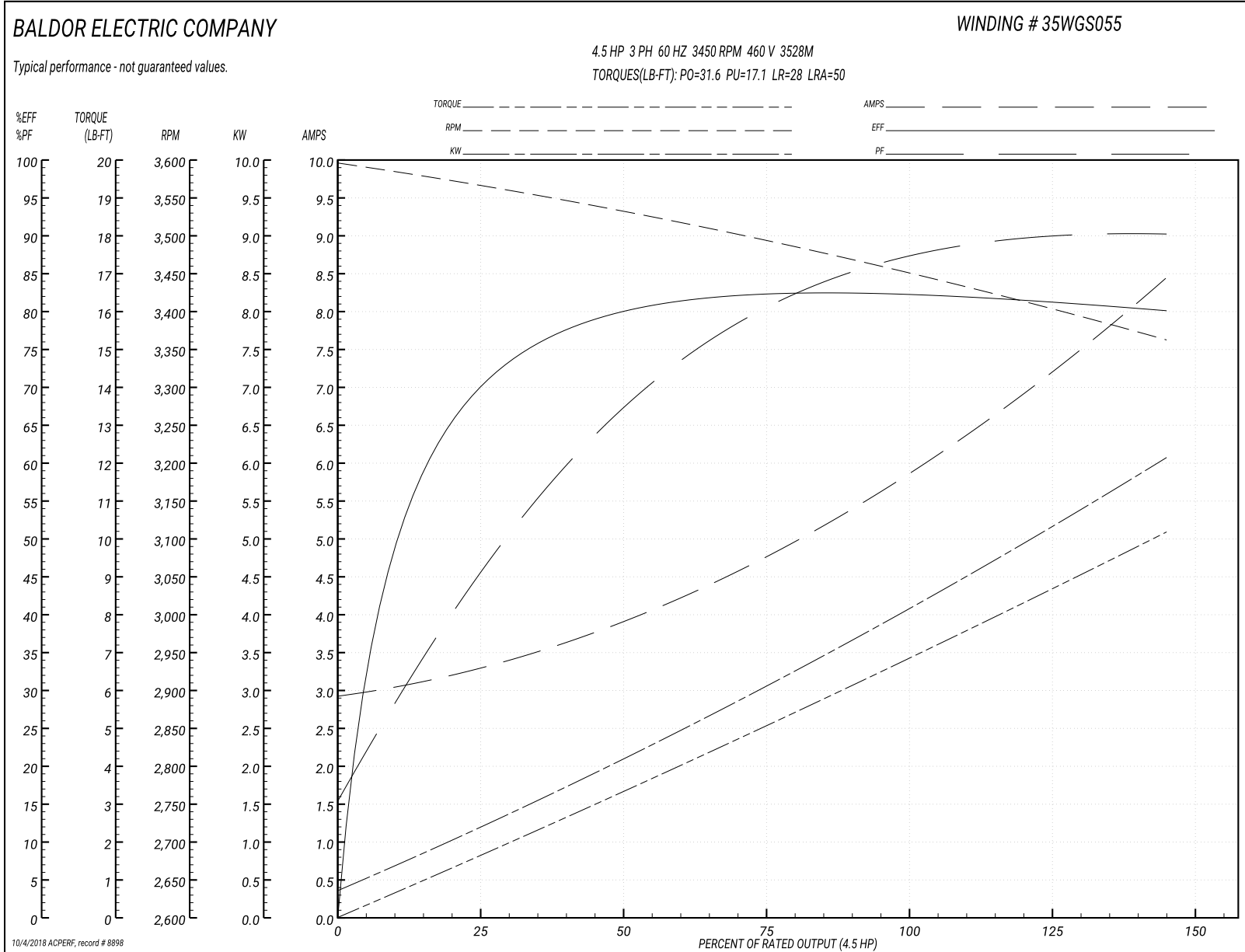
|                               |                    |                        |
|-------------------------------|--------------------|------------------------|
| <b>Winding:</b> 35WGS055-R002 | <b>Type:</b> 3528M | <b>Enclosure:</b> TEAO |
|-------------------------------|--------------------|------------------------|

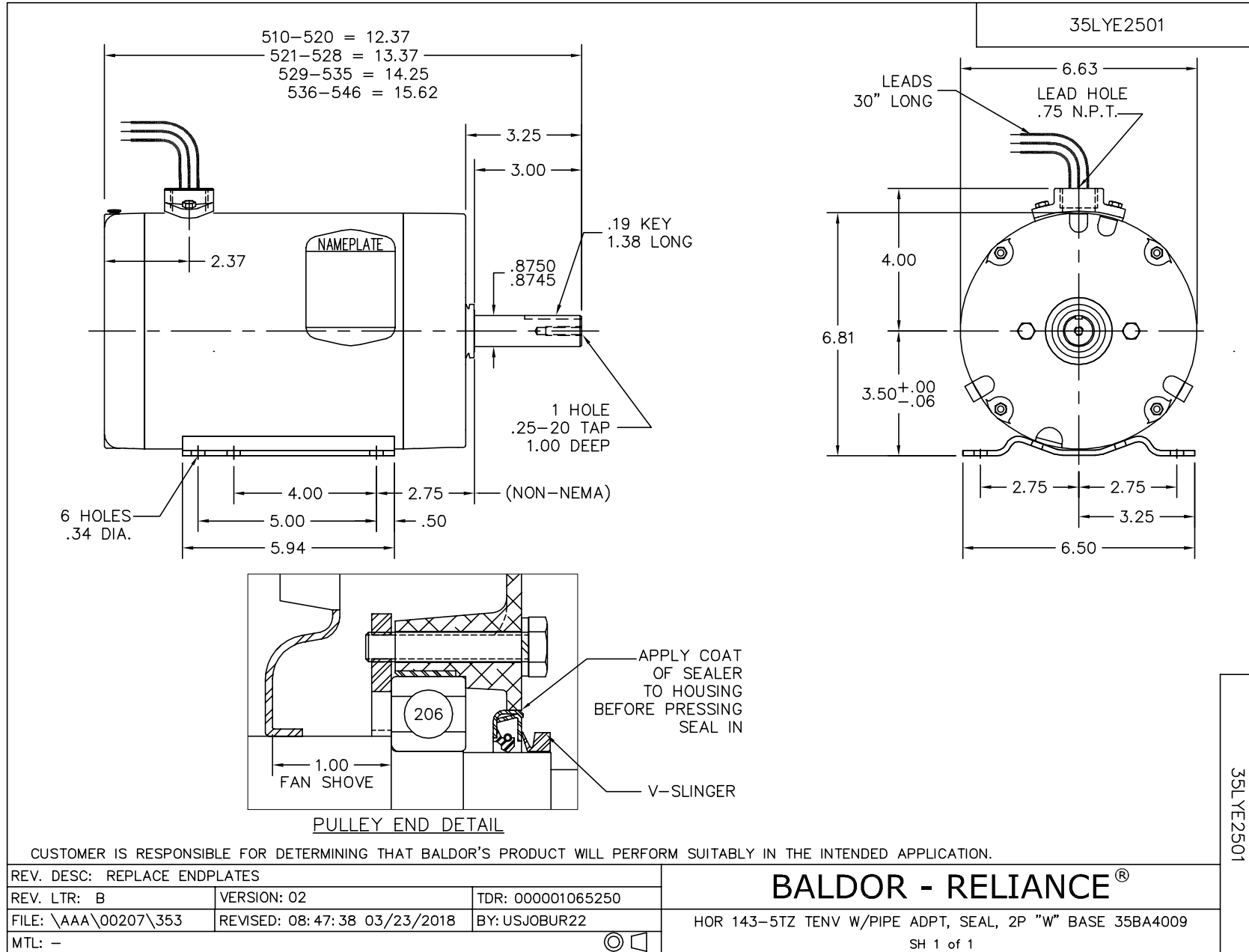
| Nameplate Data        |              |              |   | 460 V, 60 Hz:<br>High Voltage Connection |                |
|-----------------------|--------------|--------------|---|--|----------------|
| Rated Output (HP)     | 3-4.5        |              |   | Full Load Torque                         | 6.8 LB-FT      |
| Volts                 | 208-230/460  |              |   | Start Configuration                      | direct on line |
| Full Load Amps        | 13-12/6      |              |   | Breakdown Torque                         | 31.6 LB-FT     |
| R.P.M.                | 3450         |              |   | Pull-up Torque                           | 17.1 LB-FT     |
| Hz                    | 60           | Phase        | 3 | Locked-rotor Torque                      | 28 LB-FT       |
| NEMA Design Code      | B            | KVA Code     | K | Starting Current                         | 50 A           |
| Service Factor (S.F.) | 1            |              |   | No-load Current                          | 3 A            |
| NEMA Nom. Eff.        | 0            | Power Factor | 0 | Line-line Res. @ 25°C                    | 3.8 Ω          |
| Rating - Duty         | 40C AMB-CONT |              |   | Temp. Rise @ Rated Load                  |                |

Load Characteristics 460 V, 60 Hz, 4.5 HP

| % of Rated Load | 25   | 50   | 75   | 100  | 125  | 150  |
|-----------------|------|------|------|------|------|------|
| Power Factor    | 48   | 69   | 81   | 86   | 89   | 92   |
| Efficiency      | 68.9 | 79.4 | 82.5 | 82.7 | 81.7 | 79.8 |
| Speed           | 3562 | 3530 | 3492 | 3455 | 3412 | 3359 |
| Line amperes    | 3.2  | 3.9  | 4.8  | 5.9  | 7.1  | 8.4  |

Performance Graph at 460V, 60Hz, 4.5HP Typical performance - Not guaranteed values





35LYE2501

CD0005

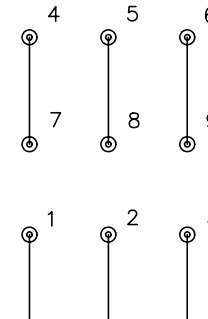


LOW VOLTAGE  
(2Y)



LINE

HIGH VOLTAGE  
(1Y)



LINE

NOTES:

1. INTERCHANGE ANY TWO LINE LEADS TO REVERSE ROTATION.
2. OPTIONAL THERMOSTATS ARE PROVIDED WHEN SPECIFIED.
3. ACTUAL NUMBER OF INTERNAL PARALLEL CIRCUITS MAY BE A MULTIPLE OF THOSE SHOWN ABOVE.
4. LEAD COLORS ARE OPTIONAL. LEADS MUST ALWAYS BE NUMBERED AS SHOWN.

|   |         |                         |              |
|---|---------|-------------------------|--------------|
| REV. DESC: REVISE TO SHOW OPTIONAL COLORS |         |                         |              |
| REV. LTR: E                               | BY: JLP | REVISED: 01/19/99 10:15 | TDR: 0171435 |
| 900000                                    |         | FILE: AAA00005140       | MDL: -       |
|   |         | MTL: -                  |              |

**BALDOR ELECTRIC Co.**

3PH, DV, 9 LEADS

CD0005