

BALDOR® • RELIANCE 

Product Information Packet

UCME7510

7.5-10 AIR OVERHP,3450RPM,3PH,60HZ,184TZ

Part Detail							
Revision:	H	Status:	PRD/A	Change #:		Proprietary:	No
Type:	AC	Elec. Spec:	36WGWS14	CD Diagram:	CD0005	Mfg Plant:	
Mech. Spec:	36Q213	Layout:	36LYQ213	Poles:	02	Created Date:	03-06-2014
Base:	RG	Eff. Date:	06-08-2018	Leads:	9#16 30" long		Y

Specs			
Catalog Number:	UCME7510	Insulation Class:	F
Enclosure:	TEAO	Inverter Code:	Not Inverter
Frame:	184TZ	KVA Code:	G
Frame Material:	Steel	Lifting Lugs:	Standard Lifting Lugs
Output @ Frequency:	7.500 HP @ 60 HZ	Locked Bearing Indicator:	Locked Bearing
	10.000 HP @ 60 HZ	Motor Lead Quantity/Wire Size:	9 @ 16 AWG
Synchronous Speed @ Frequency:	3600 RPM @ 60 HZ	Motor Lead Exit:	Pipe Or Pipe Adaptor
Voltage @ Frequency:	230.0 V @ 60 HZ	Motor Lead Termination:	Flying Leads
	460.0 V @ 60 HZ	Motor Type:	3640M
XP Class and Group:	None	Mounting Arrangement:	F1
XP Division:	Not Applicable	Power Factor:	94
Agency Approvals:	UR	Product Family:	General Purpose
	CSA	Product Type:	FARM DUTY
Auxillary Box:	No Auxillary Box	Pulley End Bearing Type:	Ball
Auxillary Box Lead Termination:	None	Pulley Face Code:	Standard
Base Indicator:	Rigid	Pulley Shaft Indicator:	Tapped & Key
Bearing Grease Type:	Polyrex EM (-20F +300F)	Rodent Screen:	None
Blower:	None	RoHS Status:	ROHS COMPLIANT

Current @ Voltage:	11.500 A @ 460.0 V	Shaft Extension Location:	Pulley End
	23.000 A @ 230.0 V	Shaft Ground Indicator:	No Shaft Grounding
	23.500 A @ 208.0 V	Shaft Rotation:	Reversible
Design Code:	B	Shaft Slinger Indicator:	Shaft Slinger
Drip Cover:	No Drip Cover	Speed Code:	Single Speed
Duty Rating:	CONT	Motor Standards:	NEMA
Electrically Isolated Bearing:	Not Electrically Isolated	Starting Method:	Direct on line
Feedback Device:	NO FEEDBACK	Thermal Device - Bearing:	NONE (OLD)
Front Face Code:	Standard	Thermal Device - Winding:	Normally Closed Thermostat
Front Shaft Indicator:	None	Vibration Sensor Indicator:	No Vibration Sensor
Heater Indicator:	No Heater	Winding Thermal 1:	None
		Winding Thermal 2:	None

Nameplate NP1279L										
CAT.NO.	UCME7510									
SPEC.	36Q213W514G2									
HP	7.5-10 AIR OVER									
VOLTS	230/460									
AMP	23/11.5									
RPM	3450									
FRAME	184TZ			HZ	60		PH	3		
SER.F.	1.00			CODE	G	DES	B	CL	F	
NEMA-NOM-EFF	86.5			PF	94					
RATING	40C AMB-CONT									
CC							USABLE AT 208V	23.5		
DE	6206			ODE	6205					
ENCL	TEAO		SN							

Nameplate NP3114L									
CAT.NO.	UCME7510								
SPEC.	36Q213W514G2								
HP	7.5-10 AIR OVER								
VOLTS	230/460								
AMP	23/11.5								
RPM	3450								
FRAME	184TZ			HZ	60		PH	3	
SER.F.	1.00			CODE	G	DES	B	CL	F
NEMA-NOM-EFF	86.5			PF	94				
RATING	40C AMB-CONT								
CC							USABLE AT 208V	23.5	
DE	6206			ODE	6205				
ENCL	TEAO			SN					

Parts List		
Part Number	Description	Quantity
SA277610	SA 36Q213W514G2	1.000 EA
RA264160	RA 36Q213W514G2	1.000 EA
HA6021A01SP	ADAPTOR, MACH	1.000 EA
36GS5000	GASKET CONDUIT ADAPTOR	1.000 EA
51XB1016A07	10-16 X 7/16 HXWSSLD SERTYB	2.000 EA
11XW0832G06	#8-32 X 3/8, TAPTITE II, HEX WSHR SLTD	1.000 EA
36EP3104A46	FREP TENV 36L/M 205 BRG NO GRSR, W/GND	1.000 EA
HW5100A05	WVY WSHR F/205 & 304 BRGS	1.000 EA
36PE3100B94	PUEP ASSEMBLY FOR ROUTING PURPOSES	1.000 EA
HW4600B50SP	SEAL 1.156 X 1.874 X 0.250 SINGLE LIP DB	1.000 EA
10XN2520A20	1/4-20X 1 1/4 HEX HD X	2.000 EA
XY2520A12	1/4-20 HEX NUT, DIRECTIONAL SERRATIONS	4.000 EA
HW4600B36SP	V-RING SLINGER 1.188 X 1.690 X .24 VITON	1.000 EA
HW2501E18	KEY, 1/4 SQ X 2.000	1.000 EA
HA7000A02	KEY RETAINER RING, 1 1/8 DIA, 1 3/8 DIA	1.000 EA
85XU0407S04	4X1/4 U DRIVE PIN STAINLESS	2.000 EA
MJ5001A27	32220KN GRAY SEALER *MIN BUY 4 QTS=1GAL	0.010 QT
HW3200A01	3/8-16X3/4 I-BLT WELDED F/S	1.000 EA
MJ1000A02	GREASE, POLYREX EM EXXON (USe 4824-15A)	0.050 LB
MG1025C02	WILKOFASST SG, 787.105, TAN	0.022 GA
LB1115N	LABEL,LIFTING DEVICE (ON ROLLS)	1.000 EA
LD5000A22	LEAD ASSY, ML1400DF14 W/#10 RING TERM	1.000 EA
HA3101A28	THRUBOLT 1/4-20 X 12.500 OHIO ROD	4.000 EA
LB1119N	WARNING LABEL	1.000 EA

Parts List (continued)		
Part Number	Description	Quantity
LC0145B01	CONNECTION LABEL	1.000 EA
NP1279L	ALUM FARM DUTY UL CSA CC	1.000 EA
NP3114L	ALUM FARM DUTY NO LOGO'S CC	1.000 EA
36PA1001	PKG GRP, PRINT PK1017A06	1.000 EA
MN416A01	TAG-INSTAL-MAINT no wire (1200/bx) 5/18	1.000 EA

Accessories		
Part Number	Description	Multiplier
36-3301	C FACE KIT	A8
36EP1304A62SP	FLANGE MTD ENDPLATE 182-4TD -ENCL (LESS	A8

AC Induction Motor Performance Data

Record # 20860 - Typical performance - not guaranteed values

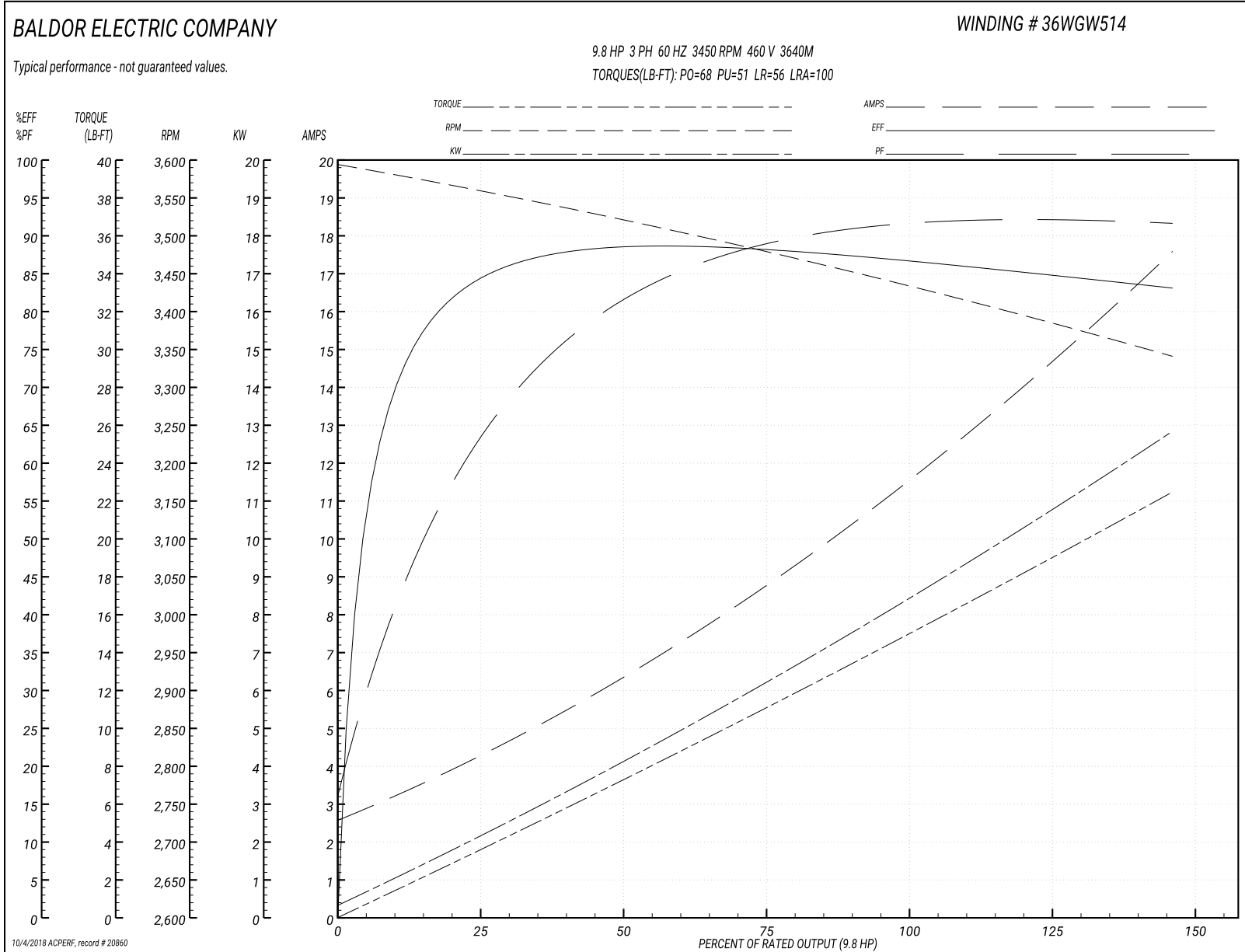
Winding: 36WGW514-R002	Type: 3640M	Enclosure: TEAO
-------------------------------	--------------------	------------------------

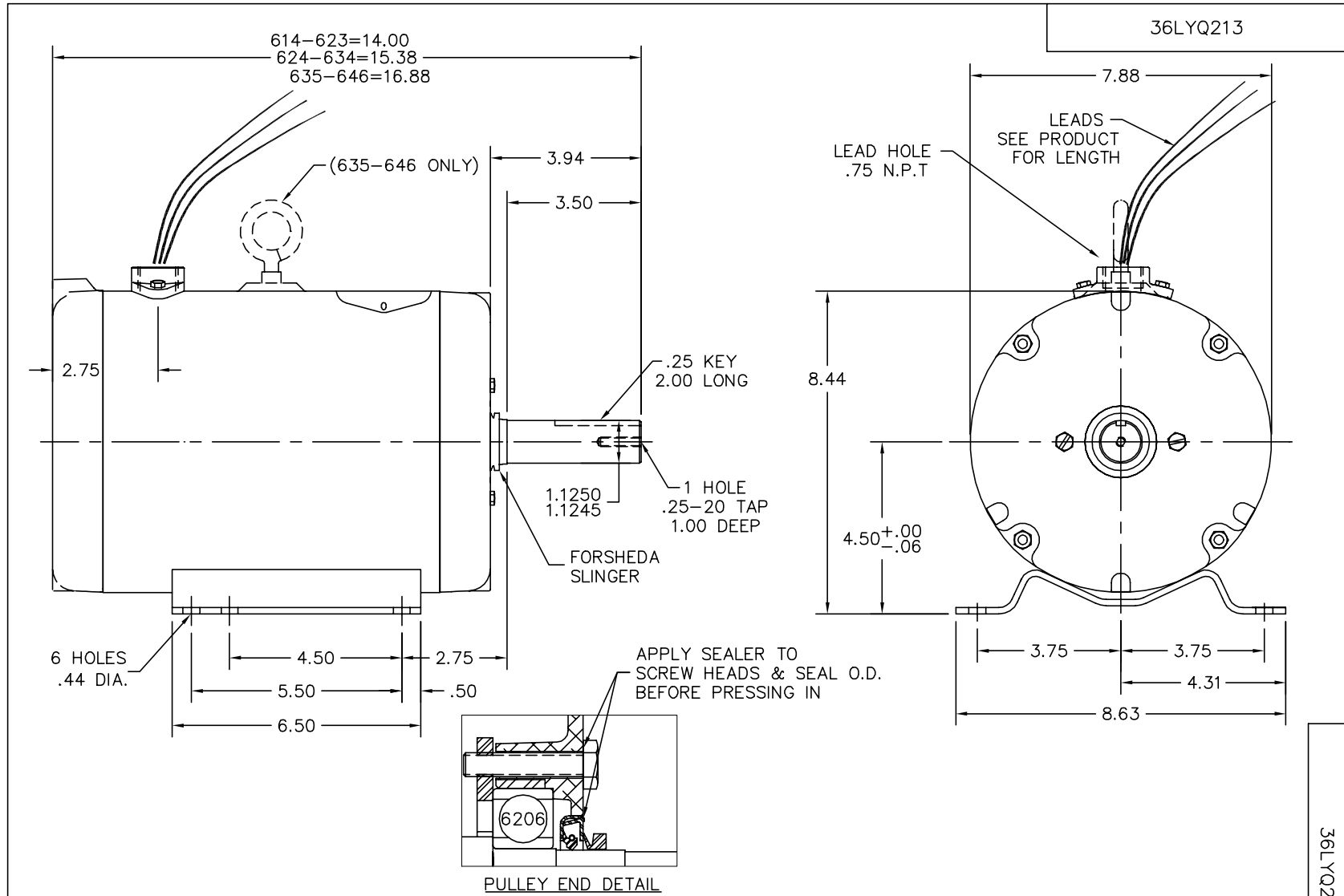
Nameplate Data				460 V, 60 Hz: High Voltage Connection	
Rated Output (HP)	7.5-10 AIR OVER			Full Load Torque	15 LB-FT
Volts	230/460			Start Configuration	direct on line
Full Load Amps	23/11.5			Breakdown Torque	68 LB-FT
R.P.M.	3450			Pull-up Torque	51 LB-FT
Hz	60	Phase	3	Locked-rotor Torque	56 LB-FT
NEMA Design Code	B	KVA Code	G	Starting Current	100 A
Service Factor (S.F.)	1			No-load Current	2.7 A
NEMA Nom. Eff.	86.5	Power Factor	94	Line-line Res. @ 25°C	1.32 Ω
Rating - Duty	40C AMB-CONT			Temp. Rise @ Rated Load	72°C

Load Characteristics 460 V, 60 Hz, 9.8 HP

% of Rated Load	25	50	75	100	125	150
Power Factor	76	89	93	95	95	94
Efficiency	85	88	88	87	85	83
Speed	3557	3518	3478	3434	3389	3340
Line amperes	4.1	6.5	9	11.6	14.4	17.6

Performance Graph at 460V, 60Hz, 9.8HP Typical performance - Not guaranteed values





CUSTOMER IS RESPONSIBLE FOR DETERMINING THAT BALDOR'S PRODUCT WILL PERFORM SUITABLY IN THE INTENDED APPLICATION.

REV. DESC: LEAD LENGTH WAS 30"		
REV. LTR: C	VERSION: 03	TDR: 000001061546
FILE: \AAA\00207\427	REVISED: 10:49:40 02/20/2018	BY: ENBRAMO
MTL: -		

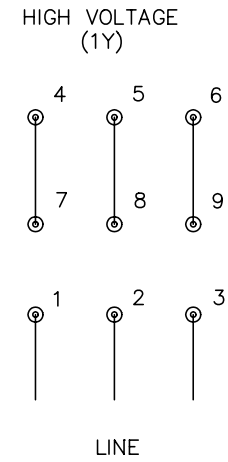
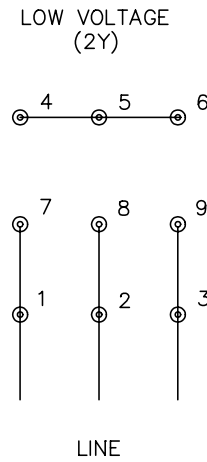
BALDOR

HORZ 182-4TZ TEAO 36M (UNIV CROP DRYER) W/DE SEAL & SLINGER

SH 1 of 1

36LYQ213

CD0005



NOTES:

1. INTERCHANGE ANY TWO LINE LEADS TO REVERSE ROTATION.
2. OPTIONAL THERMOSTATS ARE PROVIDED WHEN SPECIFIED.
3. ACTUAL NUMBER OF INTERNAL PARALLEL CIRCUITS MAY BE A MULTIPLE OF THOSE SHOWN ABOVE.
4. LEAD COLORS ARE OPTIONAL. LEADS MUST ALWAYS BE NUMBERED AS SHOWN.

REV. DESC: REVISE TO SHOW OPTIONAL COLORS			
REV. LTR: E	BY: JLP	REVISED: 01/19/99 10:15	TDR: 0171435
900000		FILE: AAA00005140	MDL: -
		MTL: -	

BALDOR ELECTRIC Co.

3PH, DV, 9 LEADS

CD0005