

Chains & sprockets	Wear strips	Side guide brackets & accessories	Levelers
Modular belts & sprockets	Chain & belt return systems	Frame & structure supports	Bearing supports
Curves & tracks	Side guide solutions	Miscellaneous products	Related information



Click here for related information.

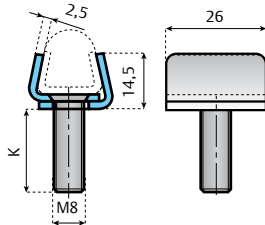
◀ back

Heavy duty clamp

Use: two piece compression style for easy assembly and adjustment. Nut and washer not included.

Note: max recommended tightening torque 2.0 Kgm.

Material: Stainless Steel (AISI 304)



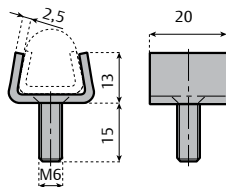
K mm	Item description	
15,2	VG-018M-01	100
20	VG-018M-02	
25,5	VG-018M-03	
30	VG-018M-04	

Single clamp - stainless steel

Use: easy assembly of guide profiles.

Note: max recommended tightening torque 1.8 Kgm.

Material: Stainless Steel (AISI 304).



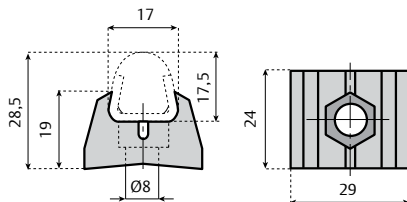
Item description	
VG-009M-01	100

Single clamp - thermoplastic

Use: it connects guide rail to bracket or rod using a standard M8 cap screw.

Supply: unassembled.

Material: clamp in reinforced polyamide (PA-FG Black)



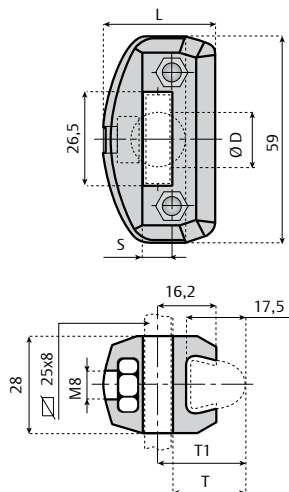
Without rod	
Item description	
VG-016-02	50

Single clamp for flat bar

Material: clamp in reinforced polyamide (PA-FG Black), bolts in stainless steel, nuts in nickel plated brass.

Supply: assembled.

Use: mount on Ø 12 diameter rod or 25x6 - 25x8, 25x10 flat bar.



Flat bar	Round bar Ø D	L	S	T	T1	Item description	
25x6	Ø 12	34	6,5	22,5	25,5	VG-022-01	50
25x8	-	33	9	21,5	25,5	CL-CON-P258M	
	-	40	9	28	32	CL-CON-P258WM	
25x10	-	34	10,5	21,5	26,5	CL-CON-P2510M	



page code

For profiles, go to:

5 1 5 2 0 a



page code

For profiles, go to:

5 1 7 3 0 a



page code

For profiles, go to:

5 2 5 7 2 a



For brackets, go to:

5 3 5 1 0 a

◀ back