

BALDOR® • RELIANCE 

Product Information Packet

WDM3561TP

3HP,1640RPM,3PH,60HZ,145T,3544M,TEFC,F3

| Part Detail | | | | | | | |
|-------------|---------|-------------|------------|-------------|--------|---------------|------------|
| Revision: | K | Status: | PRD/A | Change #: | | Proprietary: | No |
| Type: | AC | Elec. Spec: | 35WGL309 | CD Diagram: | CD0005 | Mfg Plant: | |
| Mech. Spec: | 35E2679 | Layout: | 35LYE2679 | Poles: | 04 | Created Date: | 05-15-2015 |
| Base: | RG | Eff. Date: | 06-07-2018 | Leads: | 9#18 | | Y |

| Specs | | | |
|---------------------------------|-------------------------|--------------------------------|--------------------|
| Catalog Number: | WDM3561TP | Inverter Code: | Not Inverter |
| Enclosure: | TEFC | KVA Code: | J |
| Frame: | 145T | Lifting Lugs: | No Lifting Lugs |
| Frame Material: | Steel | Locked Bearing Indicator: | No Locked Bearing |
| Output @ Frequency: | 3.000 HP @ 60 HZ | Motor Lead Quantity/Wire Size: | 9 @ 18 AWG |
| Synchronous Speed @ Frequency: | 1800 RPM @ 60 HZ | Motor Lead Exit: | Ko Box |
| Voltage @ Frequency: | 230.0 V @ 60 HZ | Motor Lead Termination: | Flying Leads |
| | 460.0 V @ 60 HZ | Motor Type: | 3540M |
| XP Class and Group: | None | Mounting Arrangement: | F3 |
| XP Division: | Not Applicable | Power Factor: | 87 |
| Agency Approvals: | UR | Product Family: | Wash Down |
| | CSA | Pulley End Bearing Type: | Sealed Bearing |
| Auxillary Box: | No Auxillary Box | Pulley Face Code: | Standard |
| Auxillary Box Lead Termination: | None | Pulley Shaft Indicator: | Standard |
| Base Indicator: | Rigid | Rodent Screen: | None |
| Bearing Grease Type: | Polyrex EM (-20F +300F) | RoHS Status: | ROHS COMPLIANT |
| Blower: | None | Shaft Extension Location: | Pulley End |
| Current @ Voltage: | 4.000 A @ 460.0 V | Shaft Ground Indicator: | No Shaft Grounding |

| | | | |
|---------------------------------------|---------------------------|------------------------------------|---------------------|
| | 8.000 A @ 230.0 V | Shaft Rotation: | Reversible |
| Design Code: | D | Shaft Slinger Indicator: | Shaft Slinger |
| Drip Cover: | No Drip Cover | Speed Code: | Single Speed |
| Duty Rating: | CONT | Motor Standards: | NEMA |
| Electrically Isolated Bearing: | Not Electrically Isolated | Starting Method: | Direct on line |
| Feedback Device: | NO FEEDBACK | Thermal Device - Bearing: | NONE (OLD) |
| Front Face Code: | Standard | Thermal Device - Winding: | None |
| Front Shaft Indicator: | None | Vibration Sensor Indicator: | No Vibration Sensor |
| Heater Indicator: | No Heater | Winding Thermal 1: | None |
| Insulation Class: | H | Winding Thermal 2: | None |

| Nameplate NP1496L | | | | | | | | | | | |
|-------------------|----------------|--|--|--|------|------|-----|---|--|-------|---|
| CAT.NO. | WDM3561TP | | | | | | | | | | |
| SPEC. | 35E2679L309G1 | | | | | | | | | | |
| HP | 3 | | | | | | | | | | |
| VOLTS | 230/460 | | | | | | | | | | |
| AMP | 8/4 | | | | | | | | | | |
| RPM | 1640 | | | | | | | | | | |
| FRAME | 145T | | | | | HZ | 60 | | | PH | 3 |
| SER.F. | 1.00 | | | | CODE | J | DES | D | | CLASS | H |
| NEMA-NOM-EFF | 81 | | | | PF | 87 | | | | | |
| RATING | 40C AMB-CONT | | | | | | | | | | |
| CC | USABLE AT 208V | | | | | | | | | | |
| DE | 6205 | | | | ODE | 6203 | | | | | |
| ENCL | TEFC | | | | SN | | | | | | |

| Parts List | | |
|---------------|--|----------|
| Part Number | Description | Quantity |
| SA300790 | SA 35E2679L309G1 | 1.000 EA |
| RA287850 | RA 35E2679L309G1 | 1.000 EA |
| NS2512A01 | INSULATOR, CONDUIT BOX X | 1.000 EA |
| 35CB3010A01W | 35 CB .75 NPT @ 6:00, WHITE EPOXY | 1.000 EA |
| 35GS1022A03 | GASKET BOX .125 THK WHITE NEOPRENE | 1.000 EA |
| RM1006A03 | GROMMET, #2867 1.12 HOLE (ATLANTIC INDIA | 1.000 EA |
| 51XB1016A08 | 10-16X 1/2HXWSSLD SERTYB | 2.000 EA |
| HA5027A01 | HA4066A01 T-DRAIN X2 BAGGED | 1.000 EA |
| 11XW1032G06 | 10-32 X .38, TAPTITE II, HEX WSHR SLTD U | 1.000 EA |
| HW3001B01 | BRASS CUP WASHER, FOR #10 SCREW | 1.000 EA |
| 35EP3122R07W | CUSTOM ODE,203 BRG,1.063SH,.125NPT DRNS, | 1.000 EA |
| HW4072A01 | BLACK DRAIN PLUG FOR .125 NPT | 3.000 EA |
| HW5100A03 | WAVY WASHER (W1543-017) | 1.000 EA |
| 35EP3123E00W | MASTER DE,205 BRG,1.623SH,.125NPT DRNS(W | 1.000 EA |
| HW4072A01 | BLACK DRAIN PLUG FOR .125 NPT | 3.000 EA |
| HW4606A02 | JM CLIPPER/SEAL (LWE-0938-1624-AL23) | 1.000 EA |
| XY1032S02 | 10-32 HEX NUT R.H. S STL | 4.000 EA |
| 51XB1214A16 | 12-14X1.00 HXWSSLD SERTYB | 1.000 EA |
| 35FH4005A32SP | IEC FH NO GRSR W/3 HOLES - PRIMED | 1.000 EA |
| 11XW1032S06 | 10-32 X .38, TAPTITE II, HEX WSHR SLTD U | 3.000 EA |
| HW4606A01 | JM CLIPPER/SEAL (WDE-0667-1064-BH49) | 1.000 EA |
| 35CB4522 | 35 LIPPED CB LID PRIMED | 1.000 EA |
| 35GS1030A02 | 35 GS FOR CB LID - WHITE NEOPRENE | 1.000 EA |
| 59XW0832S07 | TAPTITE II,HEX WSHR UNSLTD SER,410 S.S., | 4.000 EA |

| Parts List (continued) | | |
|-------------------------------|---|-----------------|
| Part Number | Description | Quantity |
| HW2502D13 | SS KEY, 3/16 SQ X 1.375 | 1.000 EA |
| HA7000A01 | KEY RETAINER 7/8" DIA SHAFT | 1.000 EA |
| MJ5001A27 | 32220KN GRAY SEALER *MIN BUY 4 QTS=1GAL | 0.001 QT |
| 85XU0407S04 | 4X1/4 U DRIVE PIN STAINLESS | 2.000 EA |
| LB1164 | LABEL,WARNING AND DRAIN | 1.000 EA |
| HA5027A02 | HA4054 T-DRAIN X2 BAGGED WITH LABEL | 1.000 EA |
| MJ1000A02 | GREASE, POLYREX EM EXXON (USe 4824-15A) | 0.050 LB |
| 35FN3002A05SP | EXFN, PLASTIC, 6.376 OD, .638 ID | 1.000 EA |
| MG1025Z02 | ACTIVATOR WILKOFAS 060.02HF | 0.010 GA |
| MG1025W01 | WILKOFAS 781.01, SIGNAL WHITE #9003 | 0.017 GA |
| HA3100S10 | THRUBOLT 11.50LG SS | 4.000 EA |
| LC0005 | CONN.DIA.,TY M,9-LD,DUAL VOLT,REVERSING | 1.000 EA |
| NP1496L | SS WD UL CSA CC | 1.000 EA |
| 36PA1001 | PKG GRP, PRINT PK1017A06 | 1.000 EA |
| MN416A01 | TAG-INSTAL-MAINT no wire (1200/bx) 5/18 | 1.000 EA |
| PE-0000001 | ZRTG PE ASSEMBLY | 1.000 EA |

AC Induction Motor Performance Data

Record # 54195 - Typical performance - not guaranteed values

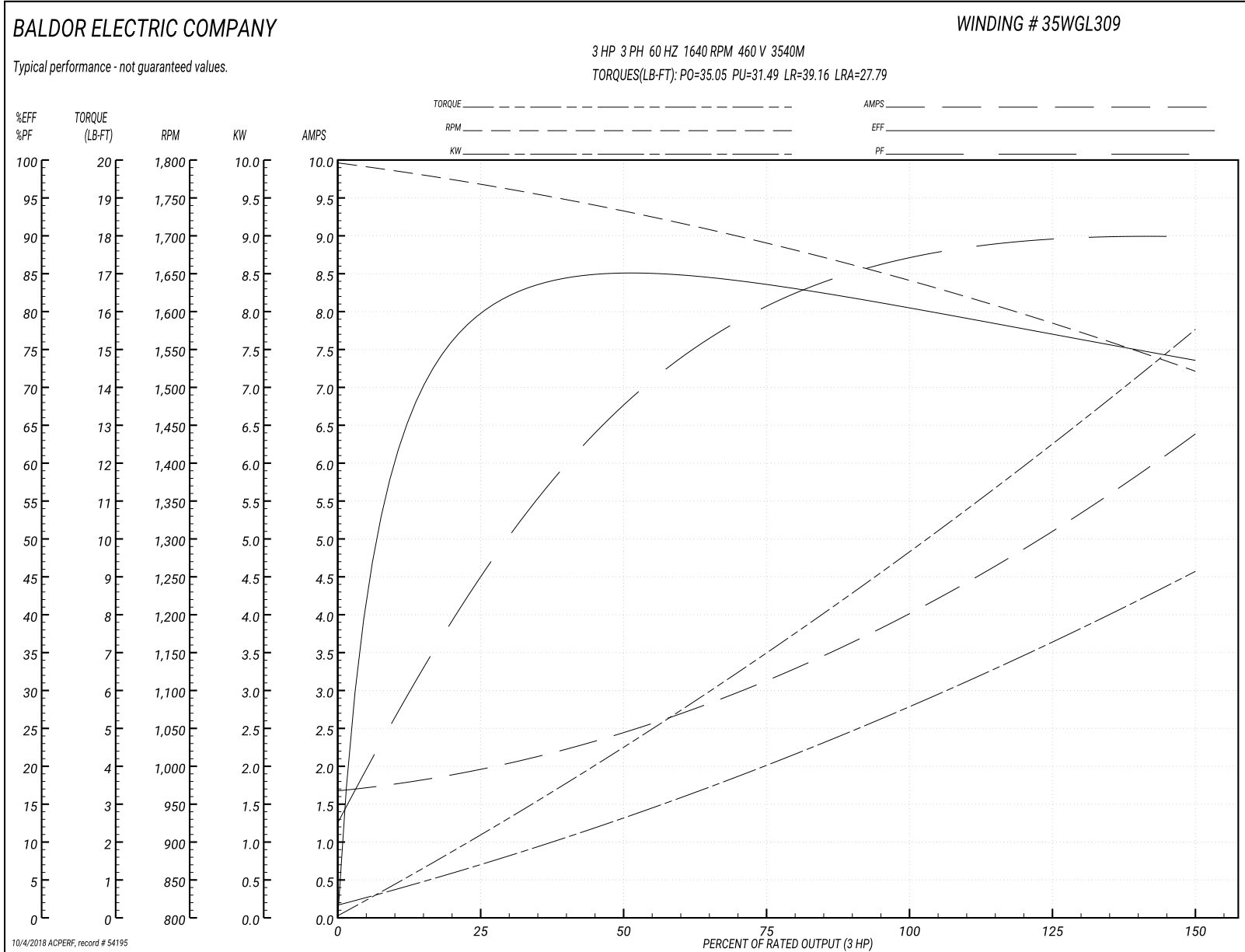
| | | |
|-------------------------------|--------------------|------------------------|
| Winding: 35WGL309-R001 | Type: 3540M | Enclosure: TEFC |
|-------------------------------|--------------------|------------------------|

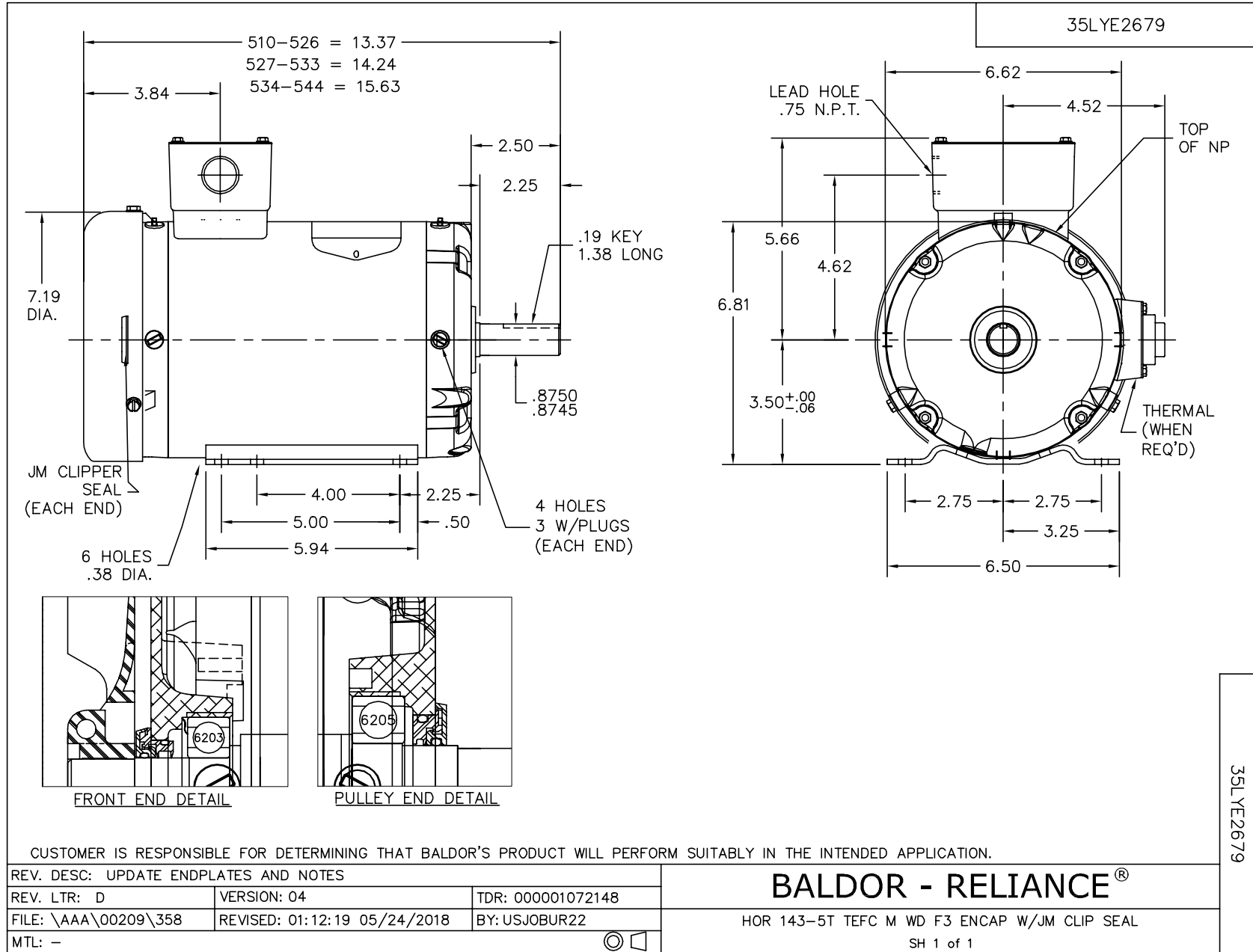
| Nameplate Data | | | | 460 V, 60 Hz: High Voltage Connection | |
|-----------------------|--------------|--------------|----|--|--------------------------|
| Rated Output (HP) | 3 | | | Full Load Torque | 9.6 LB-FT |
| Volts | 230/460 | | | Start Configuration | direct on line |
| Full Load Amps | 8/4 | | | Breakdown Torque | 35.05 LB-FT |
| R.P.M. | 1640 | | | Pull-up Torque | 31.49 LB-FT |
| Hz | 60 | Phase | 3 | Locked-rotor Torque | 39.16 LB-FT |
| NEMA Design Code | D | KVA Code | J | Starting Current | 27.79 A |
| Service Factor (S.F.) | 1 | | | No-load Current | 1.7 A |
| NEMA Nom. Eff. | 81 | Power Factor | 87 | Line-line Res. @ 25°C | 5.27 Ω |
| Rating - Duty | 40C AMB-CONT | | | Temp. Rise @ Rated Load | 95°C |
| | | | | Locked-rotor Power Factor | 63.9 |
| | | | | Rotor inertia | 0.237 LB-FT ² |

Load Characteristics 460 V, 60 Hz, 3 HP

| % of Rated Load | 25 | 50 | 75 | 100 | 125 | 150 |
|-----------------|------|------|------|------|------|------|
| Power Factor | 48 | 70 | 80 | 86 | 89 | 90 |
| Efficiency | 77.7 | 83.4 | 83.2 | 81.2 | 78 | 73 |
| Speed | 1765 | 1728 | 1690 | 1644 | 1589 | 1518 |
| Line amperes | 1.92 | 2.47 | 3.16 | 4.02 | 5.07 | 6.39 |

Performance Graph at 460V, 60Hz, 3.0HP Typical performance - Not guaranteed values





CD0005

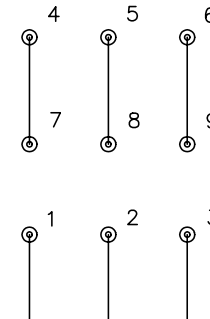


LOW VOLTAGE
(2Y)



LINE

HIGH VOLTAGE
(1Y)



LINE

NOTES:

1. INTERCHANGE ANY TWO LINE LEADS TO REVERSE ROTATION.
2. OPTIONAL THERMOSTATS ARE PROVIDED WHEN SPECIFIED.
3. ACTUAL NUMBER OF INTERNAL PARALLEL CIRCUITS MAY BE A MULTIPLE OF THOSE SHOWN ABOVE.
4. LEAD COLORS ARE OPTIONAL. LEADS MUST ALWAYS BE NUMBERED AS SHOWN.

| | | | |
|---|---------|-------------------------|--------------|
| REV. DESC: REVISE TO SHOW OPTIONAL COLORS | | | |
| REV. LTR: E | BY: JLP | REVISED: 01/19/99 10:15 | TDR: 0171435 |
| 900000 | | FILE: AAA00005140 | MDL: - |
| | | MTL: - | |

BALDOR ELECTRIC Co.

3PH, DV, 9 LEADS

CD0005