



WORLDWIDE ELECTRIC MOTOR DATA SHEET



WPMDC1-36-12V-56CB

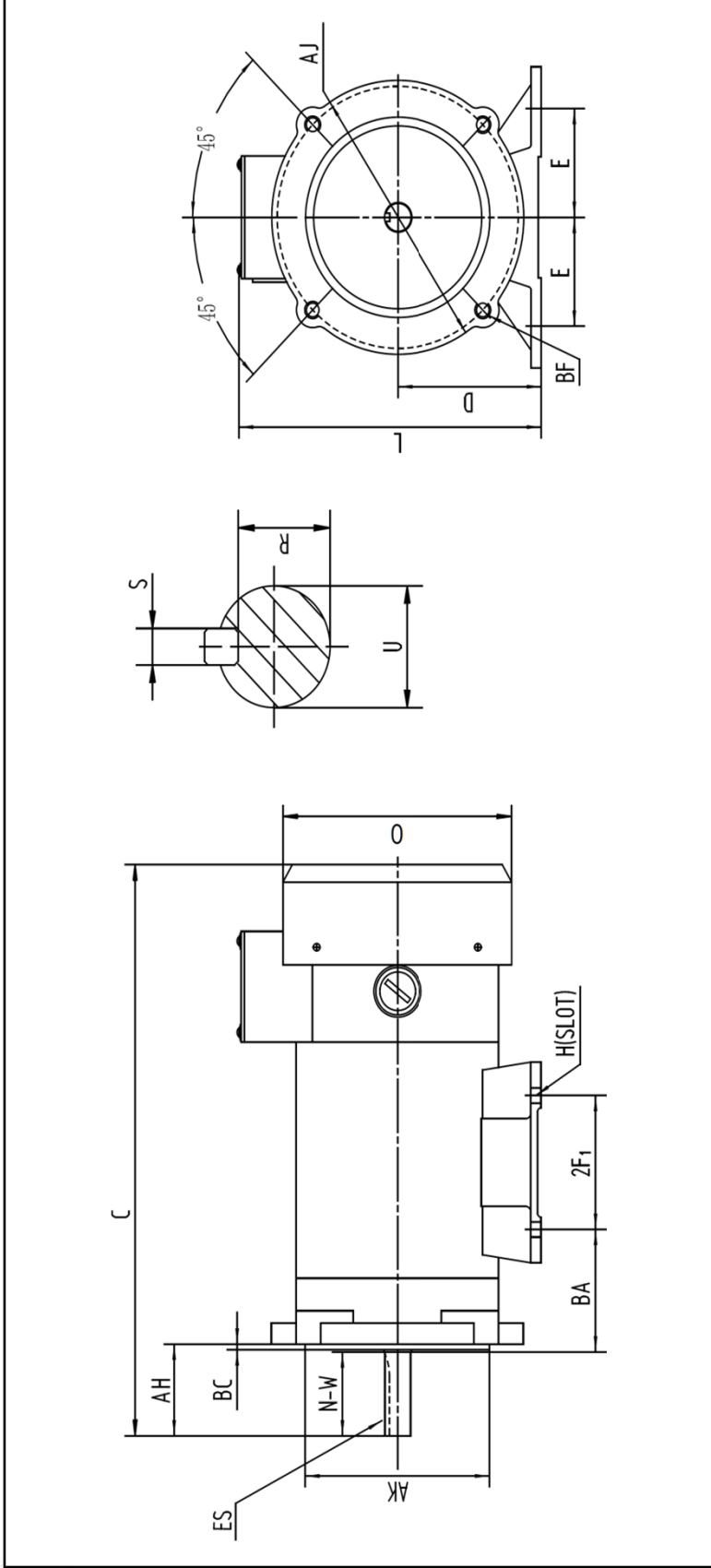
HP	1
RPM / POLES	3600 / 2
ARMATURE VOLTAGE	12 V
FRAME	56C
ENCLOSURE	TEFC
ARMATURE FULL LOAD AMPS	82.2 A
FULL LOAD TORQUE	1.46 LB. FT.
FORM FACTOR	1.35
SERVICE FACTOR	1.0
INSULATION CLASS	F
AMBIENT TEMP.	40° C
BASE TYPE	C-FACE - REMOVABLE
SHAFT	KEYED
DE BEARING	6203
ODE BEARING	6203
MOUNTING	F3
ROTATION	CW
WIRE TYPE	LOOSE WIRE
WIRE HOUSING	JUNCTION BOX
APPROX. WEIGHT	26 LBS.
FL EFFICIENCY	75.0%



REVISED - 01/01/11



WORLDWIDE ELECTRIC MOTOR DRAWING
WPMD C1-36-24V-56CB



MOUNTING

E	E2	2F1	2F2	2F3	H	BA	C	D	L	O
2.44	---	3	---	---	0.34	2.75	14.3	3.5	7.63	5.57

KEY

AH	BC	ES	S	R	0.517	FLANGE	SHAFT
2.06	0.12	1.41	0.188	0.517	5.875	AK	N-W
					4.5	AK	U
					3/8-16	BF	1.88
					0.625	BF	0.625

ALL DIMENSIONS IN INCHES