

BALDOR® • RELIANCE 

Product Information Packet

WWL3606

3HP,3450RPM,1PH,60HZ,184YZ,3634L,TEFC,F1

Part Detail							
Revision:	AC	Status:	PRD/A	Change #:		Proprietary:	No
Type:	AC	Elec. Spec:	36WGW398	CD Diagram:	CD0035A01	Mfg Plant:	
Mech. Spec:	36G680	Layout:	36LYG680	Poles:	02	Created Date:	
Base:	N	Eff. Date:	03-16-2017	Leads:	2#14		

Specs			
Catalog Number:	WWL3606	KVA Code:	H
Enclosure:	TEFC	Lifting Lugs:	No Lifting Lugs
Frame:	184YZ	Locked Bearing Indicator:	No Locked Bearing
Frame Material:	Steel	Motor Lead Quantity/Wire Size:	2 @ 14 AWG
Output @ Frequency:	3.000 HP @ 60 HZ	Motor Lead Exit:	Ko Box
Synchronous Speed @ Frequency:	3600 RPM @ 60 HZ	Motor Lead Termination:	Flying Leads
Voltage @ Frequency:	230.0 V @ 60 HZ	Motor Type:	3634L
XP Division:	Not Applicable	Mounting Arrangement:	F1
Agency Approvals:	CSA	Power Factor:	87
	UR	Product Family:	General Purpose
Auxillary Box:	No Auxillary Box	Product Type:	WOODWORKING MOTORS
Auxillary Box Lead Termination:	None	Pulley End Bearing Type:	Ball
Base Indicator:	N	Pulley Face Code:	Standard
Bearing Grease Type:	Polyrex EM (-20F +300F)	Pulley Shaft Indicator:	Standard
Blower:	None	Rodent Screen:	None
Current @ Voltage:	15.500 A @ 230.0 V	Shaft Extension Location:	Pulley End
Design Code:	L	Shaft Ground Indicator:	No Shaft Grounding
Drip Cover:	No Drip Cover	Shaft Rotation:	Fixed Standard

Duty Rating:	CONT	Shaft Slinger Indicator:	No Slinger
Electrically Isolated Bearing:	Not Electrically Isolated	Speed Code:	Single Speed
Feedback Device:	NO FEEDBACK	Motor Standards:	NEMA
Front Face Code:	Standard	Starting Method:	Direct on line
Front Shaft Indicator:	None	Thermal Device - Bearing:	None
Heater Indicator:	No Heater	Thermal Device - Winding:	None
Insulation Class:	B	Vibration Sensor Indicator:	No Vibration Sensor
Inverter Code:	Not Inverter	Winding Thermal 1:	None
		Winding Thermal 2:	None

Nameplate NP1256L										
CAT.NO.										
SPEC.	36G680W398									
HP	3 SAW DUTY									
VOLTS	230									
AMP	15.5									
RPM	3450									
FRAME	184YZ					HZ	60		PH	1
SER.F.	1.00					CODE	H		DES	L
NEMA-NOM-EFF	72					PF	87		CLASS	B
RATING	40C AMB-CONT									
CC	USABLE AT 208V									
DE	6206					ODE	6205			
ENCL	TEFC					SN				

Parts List		
Part Number	Description	Quantity
SA035817	SA 36G680W398	1.000 EA
RA031844	RA 36G680W398	1.000 EA
36CB3004	36 CB CASTING W/1.09 DIA LEAD HOLE @ 6:0	1.000 EA
36GS1000SP	GASKET-CONDUIT BOX, .06 THICK #SV-330 LE	1.000 EA
51XB1016A08	10-16X 1/2HXWSSLD SERTYB	2.000 EA
11XW1032G06	10-32 X .38, TAPTITE II, HEX WSHR SLTD U	1.000 EA
HW3001B01	BRASS CUP WASHER, FOR #10 SCREW	1.000 EA
36EP3104A02	FREP MACH W/O GRSSR, RAISED FH PADS	1.000 EA
51XW0832A07	8-32 X .44, TAPTITE II, HEX WSHR SLTD SE	1.000 EA
13XF0832A08	8-32 X.50 PAN HD,SLTD, TYPE F SCREW, ZIN	2.000 EA
35CB4802A02SP	CAPACITOR COVER, STAMPED X	1.000 EA
35GS3001A02	GASKET, CA.COVER, 5.38 LONG .06 CS301	1.000 EA
51XB1016A05	10-16X5/16HX WA SL SR TYB (F/S)	2.000 EA
HW5100A05	WVY WSHR F/205 & 304 BRGS	1.000 EA
36EP3100A04	PU ENDPLATE, MACH	1.000 EA
51XW0832A07	8-32 X .44, TAPTITE II, HEX WSHR SLTD SE	1.000 EA
HA3101A25	THRUBOLT 1/4-20 X 11.000 OHIO ROD	4.000 EA
XY2520A12	1/4-20 HEX NUT, DIRECTIONAL SERRATIONS	4.000 EA
51XB1214A16	12-14X1.00 HXWSSLD SERTYB	1.000 EA
36FH4009A101	IEC FH NO GREASER, W/PRIMER	1.000 EA
51XW1032A06	10-32 X .38, TAPTITE II, HEX WSHR SLTD S	3.000 EA
36CB4516	36 LIPPED CB LID - GALVANNEAL	1.000 EA
37GS1001SP	GASKET, CONDUIT BOX LID, .06 THICK LEXID	1.000 EA
51XW0832A07	8-32 X .44, TAPTITE II, HEX WSHR SLTD SE	4.000 EA

Parts List (continued)		
Part Number	Description	Quantity
HW2501D15	KEY, 3/16 X 1.625	1.000 EA
85XU0407S04	4X1/4 U DRIVE PIN STAINLESS	2.000 EA
WD1000A15	3-520132-2 AMP FLAG (4M/RL NON-CANC/NON-	2.000 EA
MJ1000A02	GREASE, POLYREX EM EXXON (USe 4824-15A)	0.050 LB
MG1000G27	MED CHARCOAL METALLIC GREY 400-0096	0.022 GA
SP5172A49	MODEL 36 TYPE L STATIONARY SWITCH LEAD A	1.000 EA
LB1009N	LABEL,ROTATION DIRECTION (ON ROLLS)	1.000 EA
EC1216C06SP	ELEC CAP, 216-259 MFD, 250V, 2.06D X 4.	1.000 EA
35FN3002A04SP	EXFN, PLASTIC, 6.376 OD, .906 ID W/KEY	1.000 EA
LB1119N	WARNING LABEL	1.000 EA
NP1256L	ALUM UL CSA CC INDUSTRIAL MOTOR A60	1.000 EA
36PA1001	PKG GRP, PRINT PK1017A06	1.000 EA
MN416A01	TAG-INSTAL-MAINT no wire (1200/bx) 5/18	1.000 EA

Accessories		
Part Number	Description	Multiplier
36-1037	C FACE KIT	A8
36EP1304A62SP	FLANGE MTD ENDPLATE 182-4TD -ENCL (LESS	A8

AC Induction Motor Performance Data

Record # 10755 - Typical performance - not guaranteed values

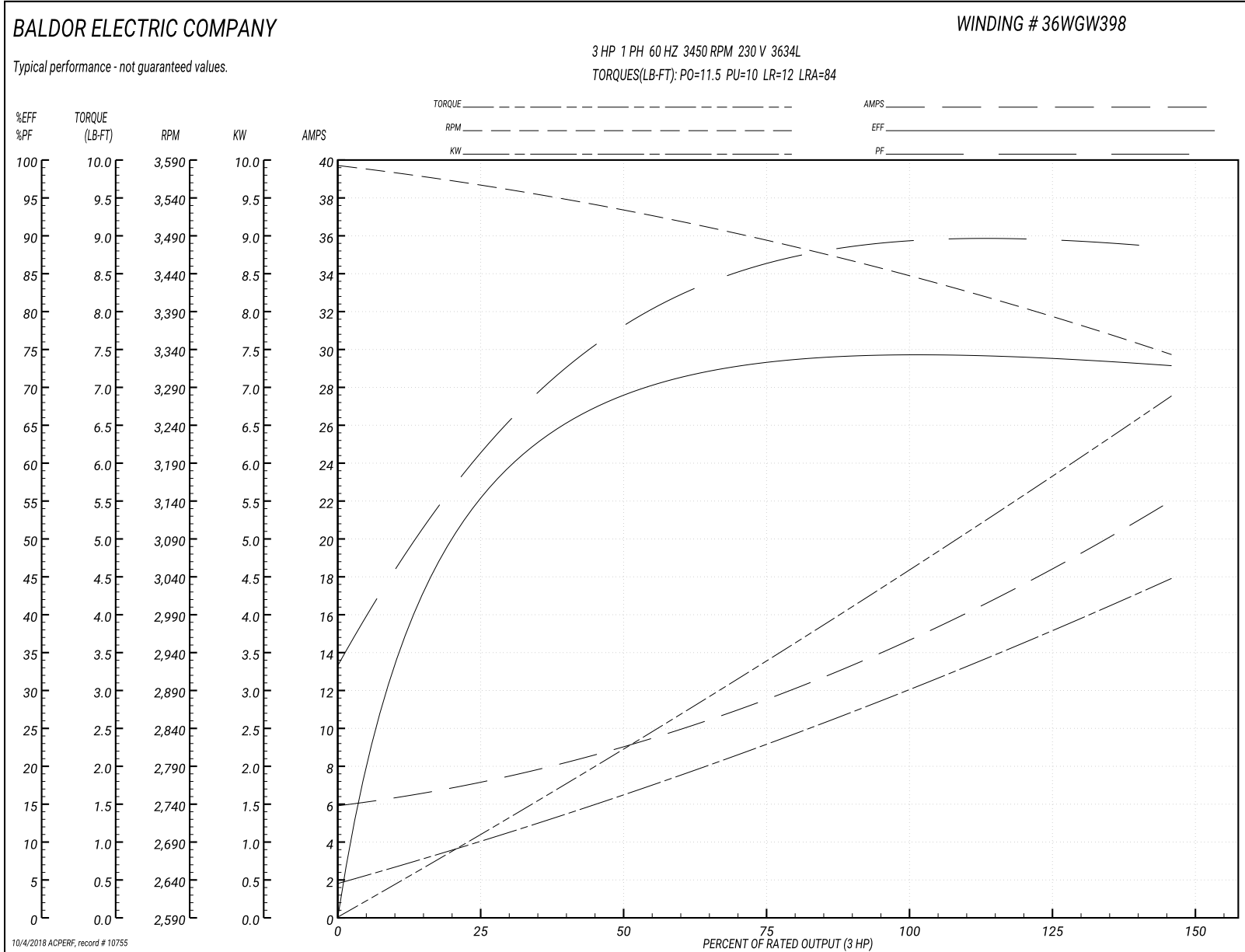
Winding: 36WGW398-R001	Type: 3634L	Enclosure: TEFC
-------------------------------	--------------------	------------------------

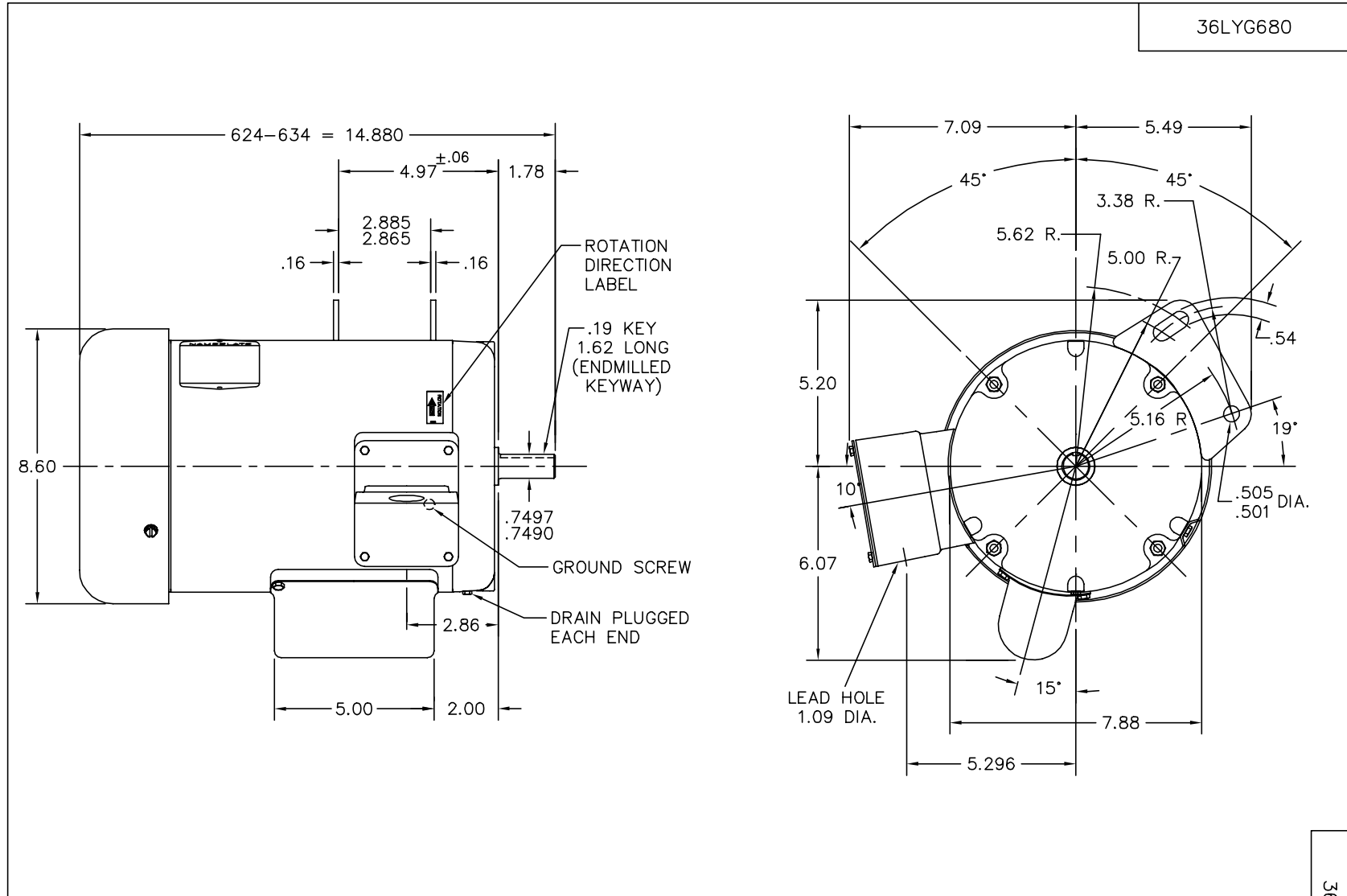
Nameplate Data				230 V, 60 Hz: Single Voltage Motor	
Rated Output (HP)	3 SAW DUTY			Full Load Torque	4.6 LB-FT
Volts	230			Start Configuration	direct on line
Full Load Amps	15.5			Breakdown Torque	11.5 LB-FT
R.P.M.	3450			Pull-up Torque	10 LB-FT
Hz	60	Phase	1	Locked-rotor Torque	12 LB-FT
NEMA Design Code	L	KVA Code	H	Starting Current	84 A
Service Factor (S.F.)	1			No-load Current	5.9 A
NEMA Nom. Eff.	72	Power Factor	87	Line-line Res. @ 25°C	0.482 Ω A Ph 3.7 Ω B Ph
Rating - Duty	40C AMB-CONT			Temp. Rise @ Rated Load	83°C

Load Characteristics 230 V, 60 Hz, 3 HP

% of Rated Load	25	50	75	100	125	150
Power Factor	62	77	85	89	91	91
Efficiency	55.2	68.6	73.4	74.8	74.3	72.5
Speed	3554	3519	3482	3439	3390	3330
Line amperes	7.2	9.2	11.7	14.7	18.1	22.1

Performance Graph at 230V, 60Hz, 3.0HP Typical performance - Not guaranteed values





CUSTOMER IS RESPONSIBLE FOR DETERMINING THAT MOTOR PERFORMANCE IS SUITABLE IN THE APPLICATION.

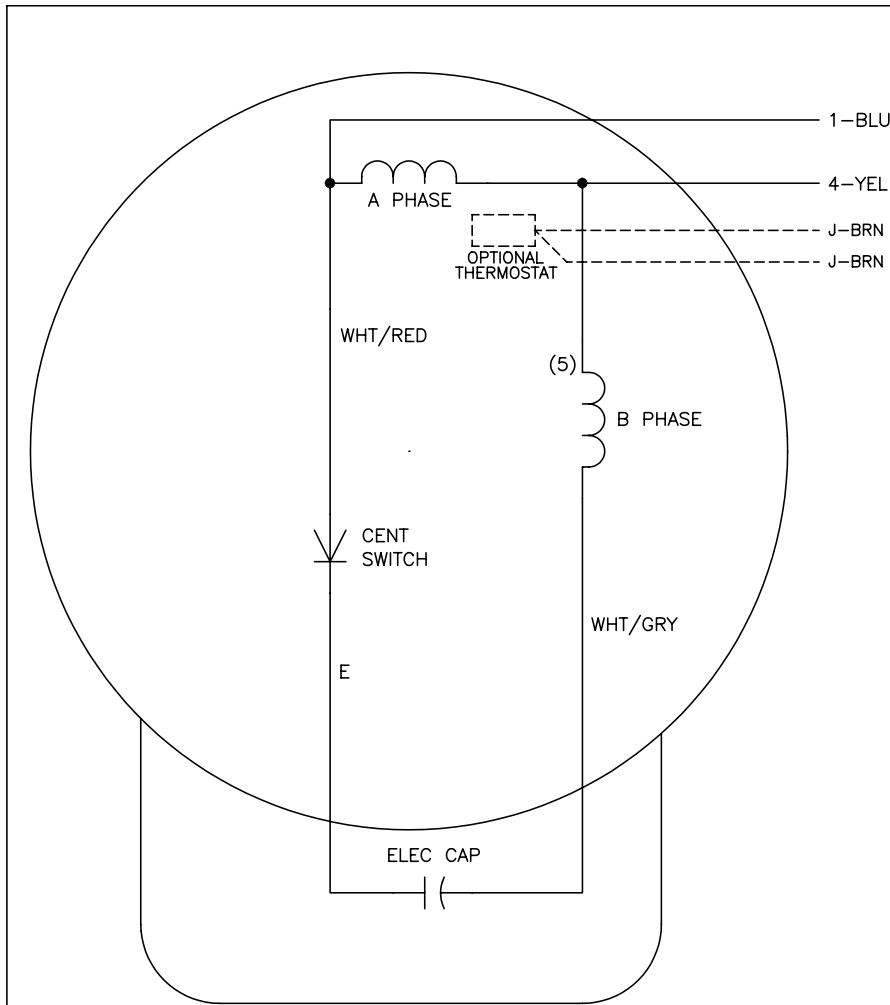
REV. DESC: 36EP3104A02 WAS 36EP3101A04, 36FH4009A101 WAS A02			
REV. LTR: D	VERSION: 01	TDR: 000000382749	
0899A 79C	FILE: \AAA\00013\166	REVISED: 16:52:46 03/20/2006	
	MTL: -	BY: ENCHRCO	

BALDOR ELECTRIC Co.

HORZ 182-4YZ TEFC 36L LESS BASE

36LYG680

CD0035A01



LINE A	LINE B
1	4

NOTES:

1. CONNECTIONS ARE SHOWN FOR CCW ROTATION FACING END OPPOSITE SHAFT EXTENSION (STD). FOR CW ROTATION, INTERCHANGE 5 AND 8 INTERNALLY.
2. MULTIPLE CAPACITORS ARE CONNECTED IN PARALLEL UNLESS OTHERWISE SPECIFIED.
3. OPTIONAL THERMOSTAT IS PROVIDED WHEN SPECIFIED.
4. LEAD COLORS ARE OPTIONAL. LEADS MUST ALWAYS BE NUMBERED AS SHOWN.

REV. DESC: REVISE TO SHOW OPTIONAL COLORS			
REV. LTR: C	BY: JLP	REVISED: 04/08/99 5:26	TDR: 0178636
10V9Z0000		FILE: AAA00007579	MDL: -
		MTL: AAA00007579	

BALDOR ELECTRIC Co.

TYPE L, SV, FIX, 2 LEADS

CD0035A01