

DATE
APRIL 6, 2012
CAT. #: XP0406C

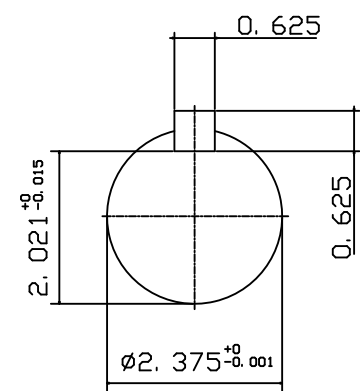
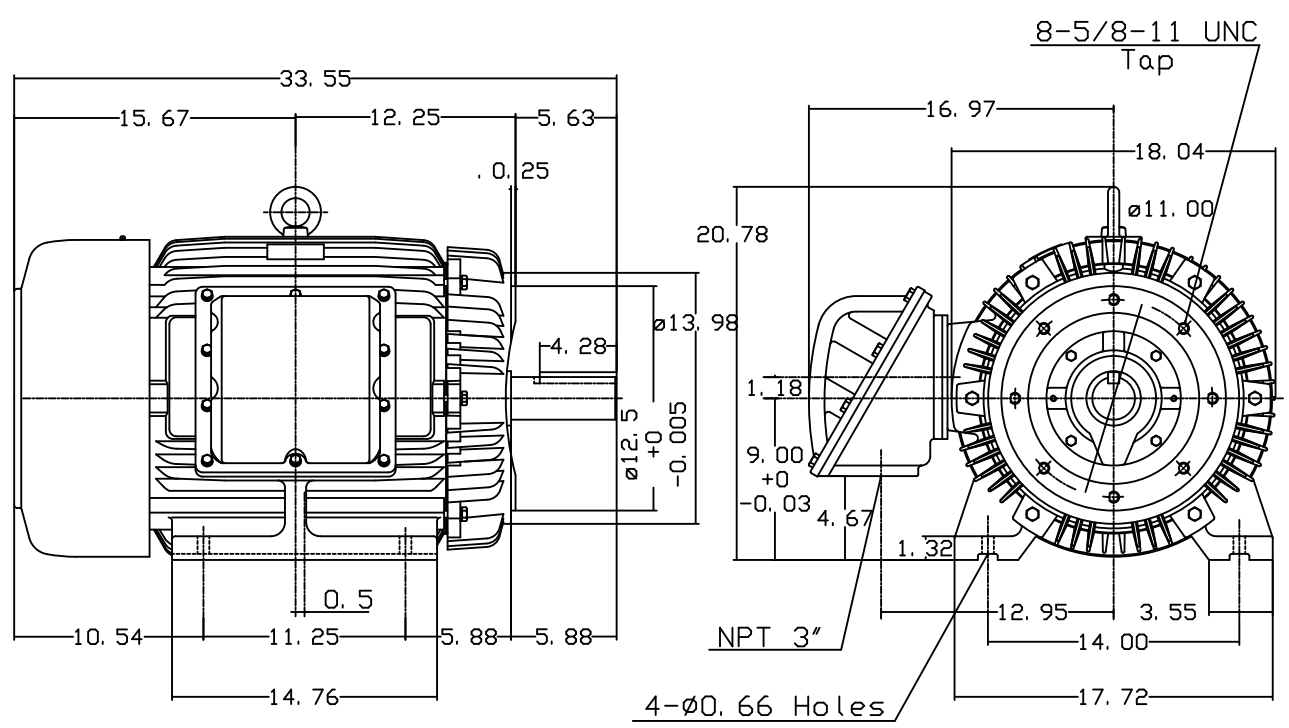
OUTLINE DIMENSIONS
3-PHASE INDUCTION MOTOR

MOTOR TYPE:
AEHHXF
FRAME NO. 364TC

| Pole | HP | KW | Hz | VOLT | Syn. Speed r/min(rpm) |
|------|----|----|----|---------|--------------------------|
| 6 | 40 | 30 | 60 | 230/460 | 1200 |

| Ins | Rating | Dimension in | Approx Weight | Bearings | |
|-----|--------|--------------|---------------|----------|-----------|
| F | CONT. | inches | 955 LBS | DE: 6313 | NDE: 6213 |

Totally Enclosed Fan-Cooled Type. Squirrel-cage Rotor.



Note:
1. Explosion proof:
Class I Group D and
Class II Group E, F, G.

| | | |
|-------|-------------|----------|
| DWN. | J. H. LIANG | 11-30-00 |
| CHKD. | C. H. KAO | 03-16-01 |
| APPD. | Y. B. HUANG | 03-16-01 |



DWG NO.
31049M631250