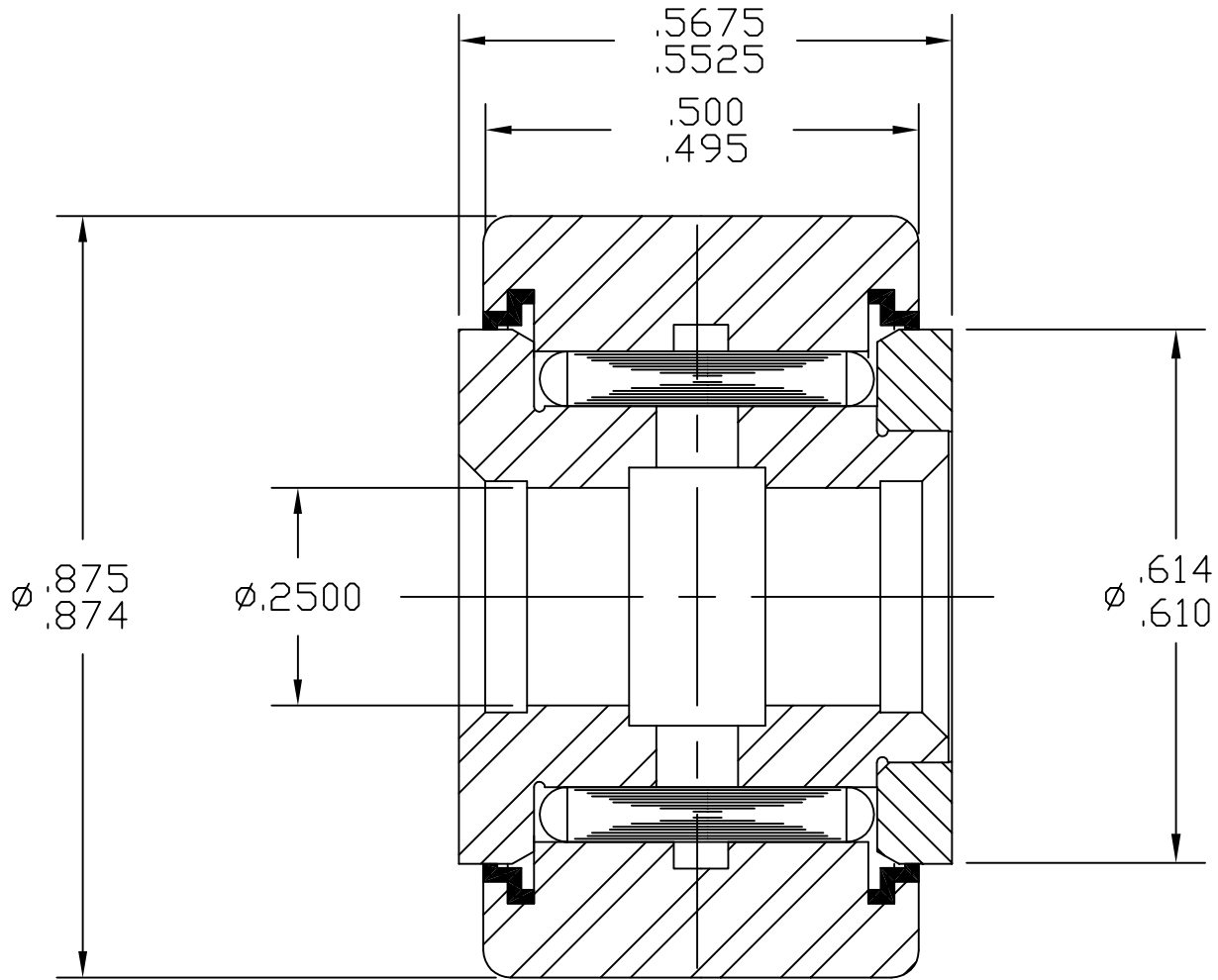


SYM	REVISION	BY	DATE

SCALE: ~



MAT'L: STAINLESS STEELS, SEALS - ACETAL.
 BEARING PACKED WITH GENERAL PURPOSE EP GREASE.
 RELUBE PROVISIONS THRU BORE.

TOLERANCES

UNLESS OTHERWISE NOTED
 FRACTIONS: $\pm .010$ ANGLES: $\pm .5$
 2 PLACE DECIMALS (.00): $\pm .005$
 3 PLACE DECIMALS (.000): $\pm .002$



ACCURATE BUSHING CO. INC.
 Manufacturers of SMITH® Bearing Product
 443 NORTH AVENUE
 Garwood, NJ 07027

PART NAME	STAINLESS STEEL YOKE ROLLER		
PART NO.	YR-7/8-X-SS		
DRAWN BY	JC	DATE	6/18/08
CHECKED BY		FILENAME	YRASSYS\7-8-X-SS