

BALDOR® • RELIANCE 

Product Information Packet

ZDBRPM25504

50HP, 1750RPM,3PH,60HZ,2570,TEBC,FOOT

Part Detail							
Revision:	A	Status:	PRD/A	Change #:		Proprietary:	No
Type:	AC	Elec. Spec:	L3380A	CD Diagram:	422927-001	Mfg Plant:	
Mech. Spec:		Layout:	617573-342	Poles:	04	Created Date:	04-10-2015
Base:		Eff. Date:	08-27-2015	Leads:			

Specs			
Catalog Number:	ZDBRPM25504		
Enclosure:	TEBC		
Frame:	FL2570Z		
Frame Material:	Exposed Laminations		
Output @ Frequency:	50.000 HP @ 60 HZ		
Synchronous Speed @ Frequency:	1800 RPM @ 60 HZ		
Voltage @ Frequency:	460.0 V @ 60 HZ		
Agency Approvals:	CCSA US		
Auxillary Box:	No Auxillary Box		
Base Indicator:	Rigid		
Bearing Grease Type:	No Grease		
Current @ Voltage:	65.000 A @ 460.0 V		
Duty Rating:	CONT		
Feedback Device:	ENCODER		
Frame Prefix:	FL		
Heater Indicator:	No Heater		
Insulation Class:	H		
Mounting Arrangement:	F3		

Product Family:	General Industrial		
Pulley End Bearing Type:	Ball		
Pulley Face Code:	Standard		
Shaft Ground Indicator:	No Shaft Grounding		
Shaft Rotation:	Reversible		
Motor Standards:	NEMA		
Thermal Device - Bearing:	NONE (OLD)		
Thermal Device - Winding:	Normally Closed Thermostat		

Parts List		
Part Number	Description	Quantity
WS286696	WS P25T0313	1.000 EA
RA282904	RA P25T0313	1.000 EA
000613006NS	RPM AC WITH CERTIFIED LOGO	1.000 EA
000692000FP	NP, WARNING LIFT INSTRUCTIONS	1.000 EA
418018122A	LABEL	2.000 EA
418057747A	METAL FASTENER	8.000 EA
000692000NH	LABEL DIRECTION AIR FL	1.000 EA
000692000VD	LABEL WARNING	1.000 EA
418056062B	NP AC BLOWER DATA	1.000 EA
422927001	C/D LABEL	1.000 EA
036100080KA	M10-1.50X 80MM HXSOCHDCS	3.000 EA
036500010AB	METRIC NUT M10-1.5PLTD400	4.000 EA
036500010AB	METRIC NUT M10-1.5PLTD400	4.000 EA
036610010AB	MHSLW M10 PLATED	4.000 EA
400638001H	SPRING WASHER	1.000 EA
418057491A	LIFTING LUG	2.000 EA
HA4054	SHORT T-DRAIN FITTING, .125" N.P.T.	1.000 EA
HA4054	SHORT T-DRAIN FITTING, .125" N.P.T.	1.000 EA
609830005ACL	STUD FRAME .375X11.38	4.000 EA
807582003AAA	BRKT,DE,250AC UNFINISHED BRACKET	1.000 EA
807582004AAB	BRKT,ODE,L250	1.000 EA
032018004AK	HHCS 1/4-20X1/2 PLATED	2.000 EA
032018008DK	HHCS 1/2-13X1 PLATED	4.000 EA
032018010DK	HHCS 1/2-13X1-1/4 PLATED	2.000 EA

Parts List (continued)		
Part Number	Description	Quantity
036000012HB	HHCS M6X12MM LONG PLATED	3.000 EA
036000020HB	HHCS M6-1.0X20MM PLATED	4.000 EA
036310010FB	RHMS TERM/BLK MTG	2.000 EA
036320008CB	M2.5 SCREW	4.000 EA
036500006AB	M4-0.7 METRIC HEX NUT	2.000 EA
036620008AB	M6 METRIC EXT LOCKWASHER	1.000 EA
065591000B	GASK 250-280	1.000 EA
075454001AJ	C/BOX, PAINTED 250-280	1.000 EA
075455000A	CBOXC, PAINTED 250-280	1.000 EA
406673002C	.75 CAP PLUG	1.000 EA
415000103A	T/LUG #14AWG-#4AWG W/HOLE FOR .250 BOLT	1.000 EA
417733004T	GASKET CONDUIT BOX	2.000 EA
418018074A	GROUND LABEL G100 METRIC 160 D.C.	1.000 EA
418057169A	LKNUT CAMER	1.000 EA
418057260A	SCREW PHILLIPS PAN HD	4.000 EA
418057367A	CLIP, BEI TACH	2.000 EA
418057373A	SCREW SHEET METAL	7.000 EA
418057381A	CONDUIT WASHER	1.000 EA
418057499A	PLATE	1.000 EA
422962051B	STUB SHAFT	1.000 EA
607980192B	RF,BEI,HS35,TWISTLOCK	1.000 EA
417077-141	BLWR MTR	1.000 EA
708533003A	PLATE, BTM FAN/BLOWER	2.000 EA
708534003A	BAFFLE, FAN/BLOWER	1.000 EA

Product Information Packet: ZDBRPM25504 - 50HP, 1750RPM,3PH,60HZ,2570,TEBC,FOOT

708534050B	GRILL, FAN COVER	1.000 EA
708534051A	FL250 FAN GRILL	1.000 EA
000640000P	TAG WINDING THERMOST	1.000 EA
004824007K	SPECIAL PAINT	0.100 EA
034180024GA	KEY 1/2X1/2X3 L	1.000 EA

REL. S.O. - VOLTS 460 ENCLOSURE TEBC WYE CONN EQ CKT OHMS PER PHASE
 FRAME FL2570 FL2570 65 MAX SAFE RPM 5000 (AT BASE RATING, 25 °C)
 HP 50 DUTY CONT IM (AMPS) 34 R1 .0778 X1 .380
 BASE SPEED 1775 S.F. 1.0 P.F.@NL/FL .049/.795 R2 .0486 X2 .480
 PHASE/HERTZ 3/60 AMB °C/INSUL 40/H WK² (LB-FT²) 3.84 XM 8.13

RATED FULL LOAD DATA

	RPM	HP	TORQUE LB-FT	FUND VOLTS	FREQ-HZ	AMPS
BASE SPEED	1774	50.0	148	460	60	65.1
MAX SPEED	3542	50.0	74	460	120	59.8
MIN SPEED	0	0	148	14.6	.875	65.1

LOAD PERFORMANCE AT BASE SPEED

	RPM	HP	TORQUE LB-FT	FUND VOLTS	FREQ-HZ	AMPS
NO LOAD	1800	0	0	460	60	33.0
1/4	1794	12.5	37	460	60	36.0
1/2	1787	25.0	74	460	60	43.4
3/4	1781	37.5	111	460	60	53.4
FULL LOAD	1774	50.0	148	460	60	65.1
O/L	1741	98.1	296	460	60	122

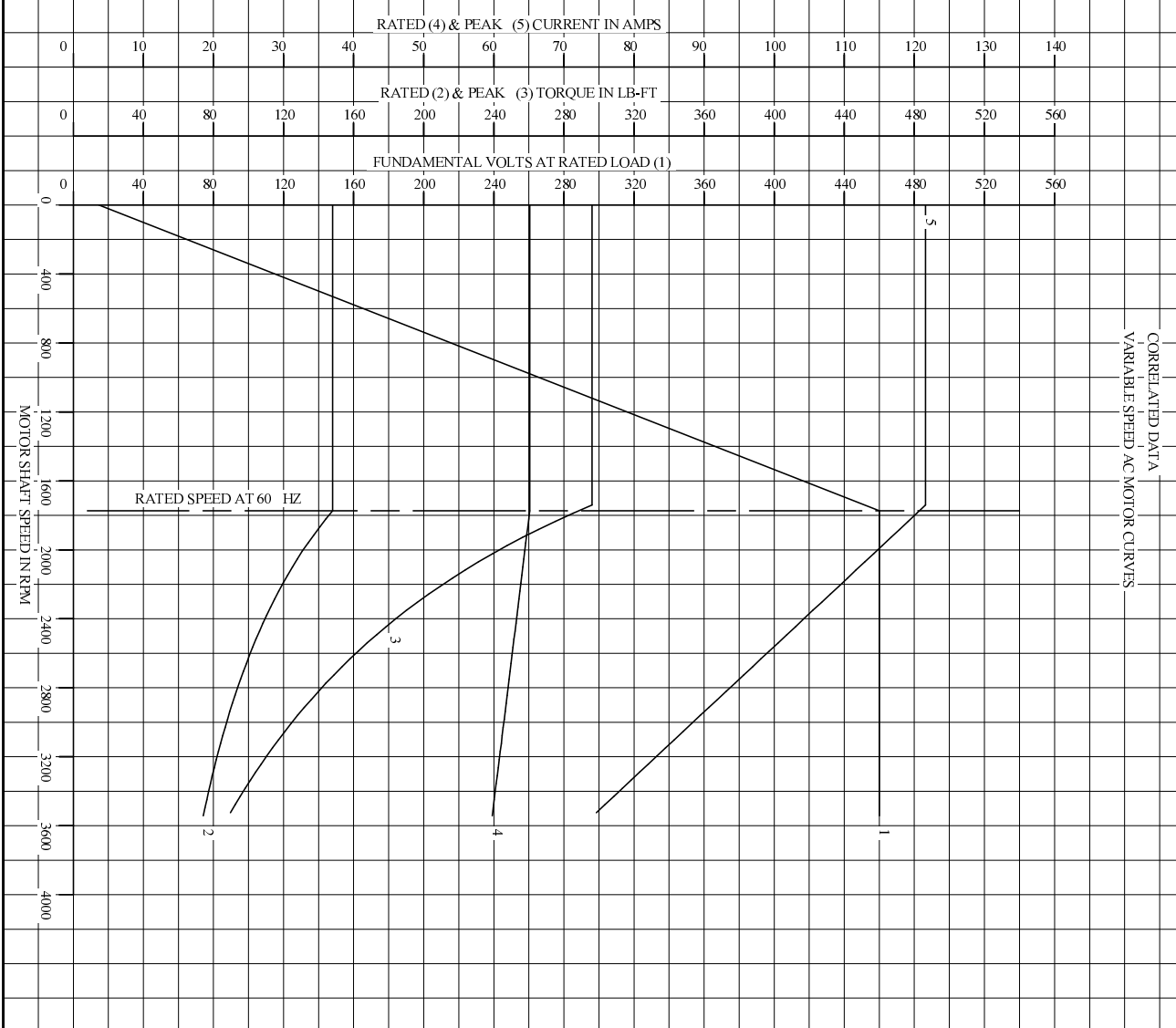
BLOWER DATA

VOLTS	PH/HZ	FL AMPS	LR AMPS	FRAME	CFM

REMARKS: TYPICAL DATA
 CORRELATED DATA

	DR. BY B. GRANT	A-C MOTOR PERFORMANCE DATA L3380A ISSUE DATE 8-14-06
	CK. BY T. CUER	
APP. BY 8-14-06	DATE 8-14-06	

REL S.O.	-	VOLTS	460	ENCLOSURE	TEBC	WYE CONN EQ CKT OHMS PER PHASE
FRAME	FL2570	AMPS	65	MAX SAFE RPM	5000	(AT BASE RATING, 25°C)
HP	50	DUTY	CONT	IM (AMPS)	34	X1 .380
BASE SPEED	1775	S.F.	1.0	P.F.@NL/FL	.049/.795	R2 .0486 X2 .480
PHASE/HERTZ	3/60	AMB C/INSUL	40/H	WK ² (LB-FT ²)	3.84	XM 8.13

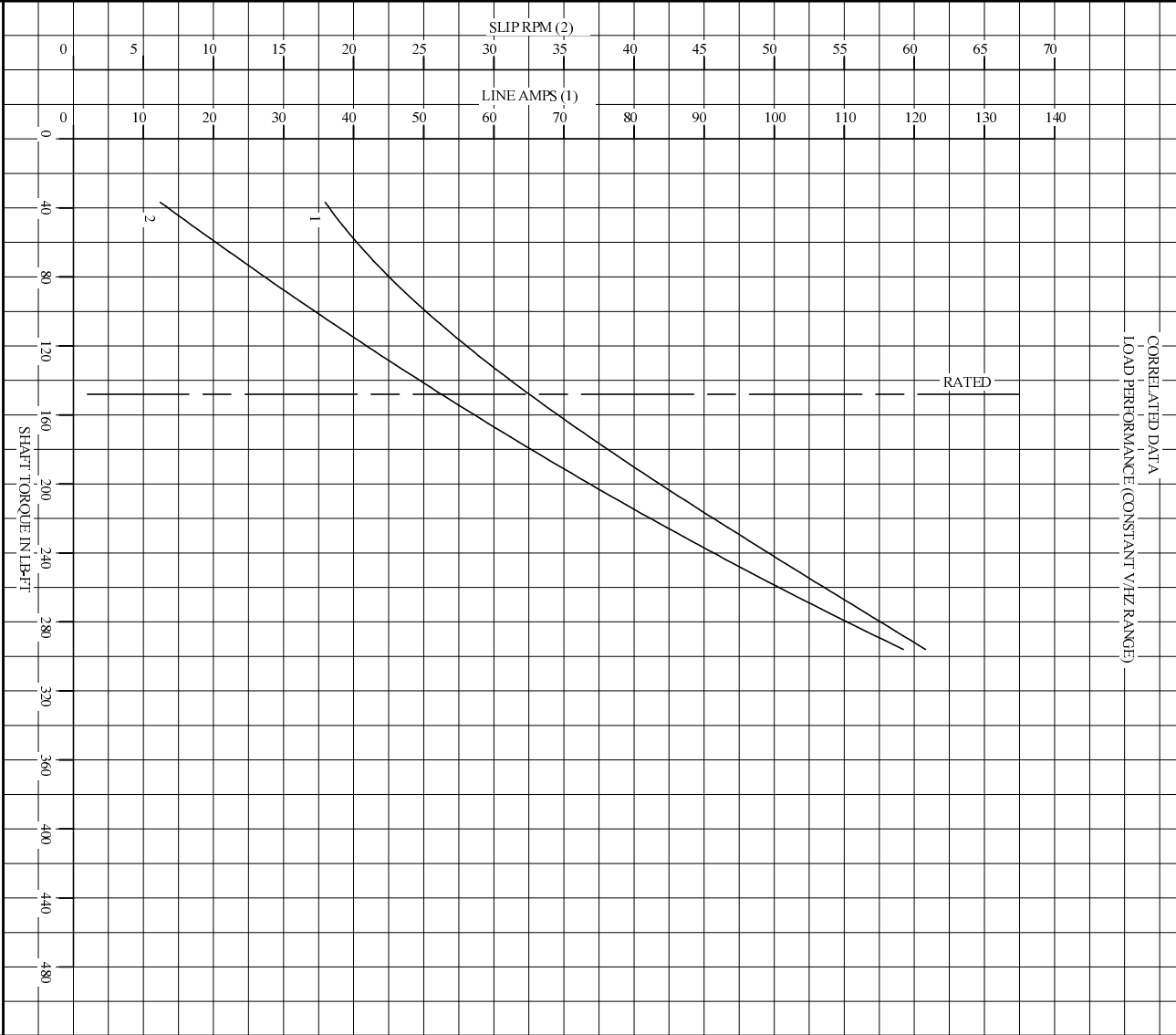


REMARKS: TYPICAL DATA
DATA VALID FOR NAMEPLATE SPEED RANGE ONLY

BALDOR BALDOR • DOUGLASS • RELIANCE	DR. BY	B. GRANT	A-C MOTOR PERFORMANCE CURVES	L3380A SH 1 OF 2 ISSUE DATE 8-14-06
	CK. BY	B. GRANT		
	APP. BY	T. CURR		
	DATE	8-14-06		

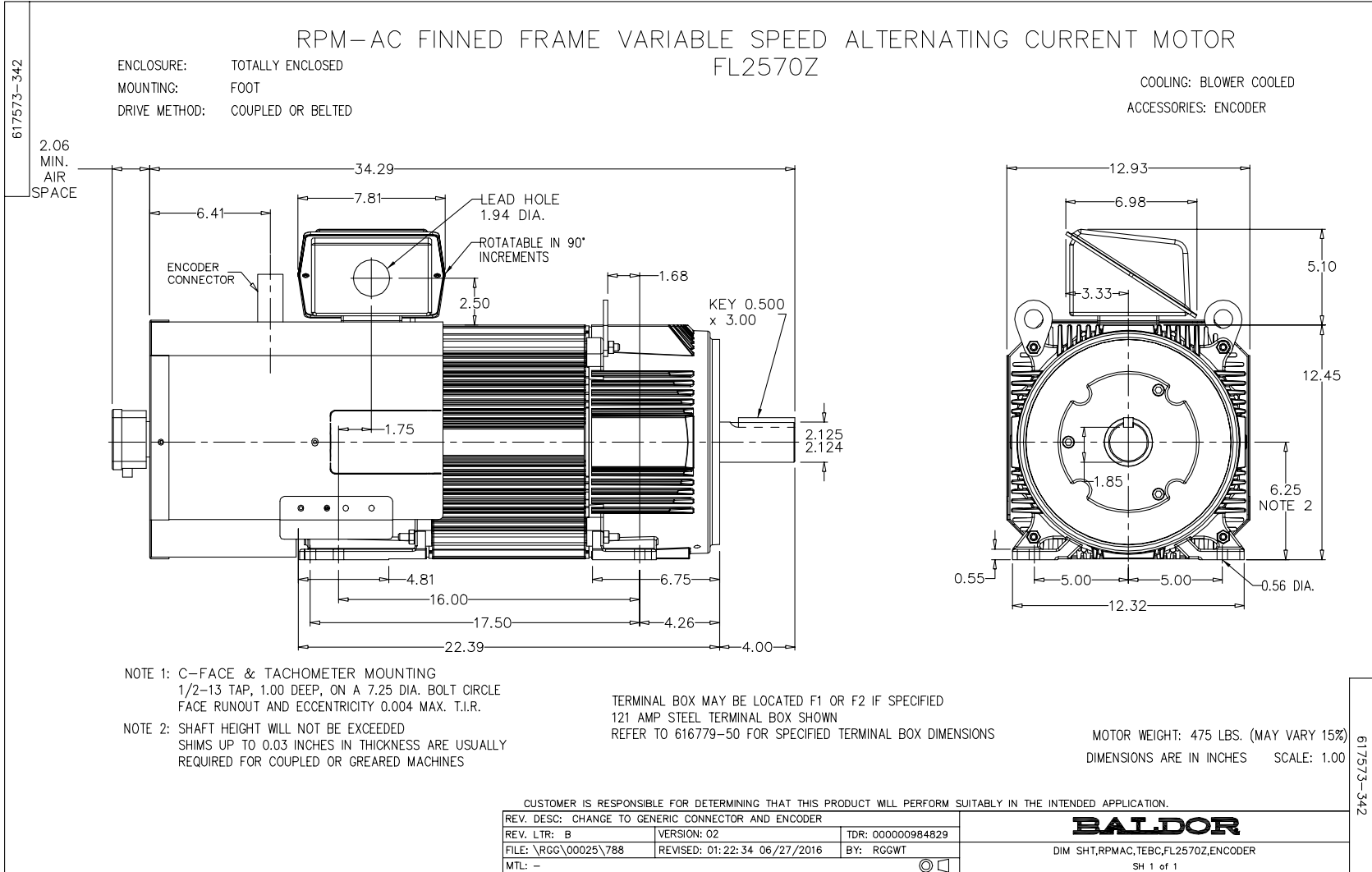
1

REL S.O.	-	VOLTS	460	ENCLOSURE	TEBC	WYE CONN EQ CKT OHMS PER PHASE (AT BASE RATING, 25°C)
FRAME	FL2570	AMPS	65	MAX SAFE RPM	5000	X1 .380
HP	50	DUTY	CONT	IM (AMPS)	34	X2 .480
BASE SPEED	1775	S.F.	1.0	P.F.@NL/FL	.049/.795	XN 8.13
PHASE/HERTZ	3/60	AMB C/INSUL	40/H	WK ² (LB-FT ²)	3.84	



REMARKS: TYPICAL DATA
DATA VALID FOR NAMEPLATE SPEED RANGE ONLY

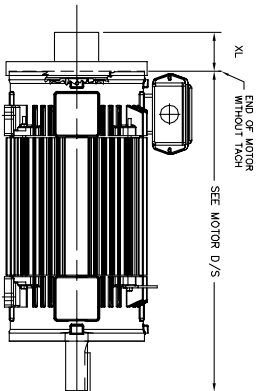
BALDOR BALDOR • DODGE • RELIANCE	DR. BY	B. GRANT	A-C MOTOR PERFORMANCE CURVES	L3380A SH20F2 ISSUE DATE 8-14-06
	CK. BY	B. GRANT		
	APP. BY	T. CURR		
	DATE	8-14-06		



616779-055

RPM AC TACHOMETER DIMENSIONS
 NEMA FRAMES FL180 thru FL440 and IEC FRAMES FDL112 thru FDL280
 DIMENSIONS ARE IN INCHES(mm)

DPTV, DPSV, TEPV, TESV, TENV & TEO-PB
 IC06, IC17, IC37, IC410, & IC416-PB

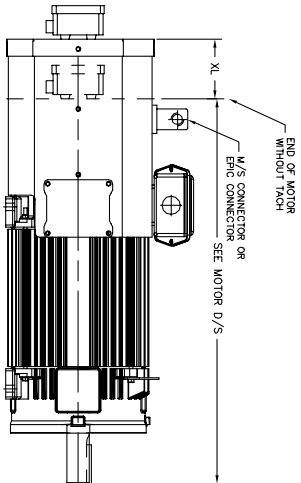


* THIS DIMENSION INCLUDES COVER FOR X/T MOTOR.

TACH. MODEL	XL Inches(mm)	LBS.
BELT DYNAPAR HS35	2.88 (74)	5
DYNAPAR H20 *	7.50(191)MAX	10
NORTHSTAR HS35M	3.31 (84)	10
NORTHSTAR ST67	2.88 (74)	5
DYNAPAR HS6	10.56 (268)	40
AVTRON M3 BR M4	3.62 (.92)	10
TAMAGAWA TS5013(X1)	6.00 (152)	10
NORTHSTAR ST65	2.88 (74)	5
NORTHSTAR ST85	2.00 (.51)	5
BELT HS8B	10.19 (259)	15
TAMAGAWA TS2151	2.64 (67)	15
BELT HS3	7.50 (191)	15
DYNAPAR HS20	2.00 (.50)	5
DYNAPAR X23	12.88 (327)	10
STIEGMANN SRK25	7.25 (184.4)	10
NORTHSTAR HS035	3.00 (.76)	10
HEIDENHAIN EGN425	2.5 (63.5)	5
AVTRON HS35M	4.19 (106.4)	5
HEIDENHAIN ERN480	5.00 (126.2)	5
DYNAPAR HD25	7.00 (177.8)	10
DYNAPAR H22	3.62 (92.1)	5
AVTRON W825	2.54 (64.5)	9
AVTRON H820	2.54 (64.5)	9
AVTRON AV850	4.50 (115)	15
HS125	3.30 (84)	5
HS125B	3.30 (84)	2
NORTHSTAR P18	3.25 (83)	15
DYNAPAR HA625	5.88 (150)	10
AVTRON AV495	9.50 (241)	18
AVTRON AV32	1.93 (49)	.7

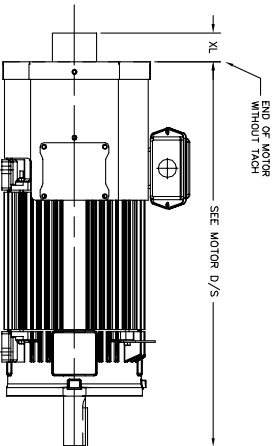
TEAO-BC, IC416-BC
 EXCLUDES NEMA FRAMES FL320 THRU FL440
 AND
 IEC FRAMES FDL200 THRU FDL280

TACH. MODEL	XL Inches(mm)	LBS.
BELT DYNAPAR HS35	4.50 (115)	10
DYNAPAR H20	4.50 (115)	15
AVTRON M3 BR M4	4.50 (115)	10
NORTHSTAR HS35M	4.50 (115)	15
NORTHSTAR ST65	4.50 (115)	10
NORTHSTAR ST85	4.50 (115)	10
NORTHSTAR ST67	4.50 (115)	5
TAMAGAWA TS5008, TS5013	4.50 (115)	10
DYNAPAR HS20	4.50 (115)	15
STIEGMANN SRK25	4.50 (115)	10
STIEGMANN SRV/SR150	4.50 (115)	3
STIEGMANN SR350	4.50 (115)	15
HS20 & HS25	4.50 (115)	15
AVTRON HS35M	4.50 (115)	10
AVTRON AV85	4.50 (115)	10
AVTRON HS5	4.50 (115)	5
AVTRON HA67	4.50 (115)	10
HS138	4.50 (115)	5
TS2014	4.50 (115)	10
AVTRON HS45	4.50 (115)	15
DYNAPAR HS038M	4.50 (115)	15
AVTRON AV32	4.50 (115)	.7
AVTRON AV850	4.50 (115)	9



TEFC, IC411

TACH. MODEL	XL Inches(mm)	LBS.
BELT HS35	2.88 (74)	7
NORTHSTAR HS35M	3.31 (84)	10
DYNAPAR H20	3.75 (95)	15
DYNAPAR HS35, HS038	2.88 (74)	7
H20(X1)	9.75 (248)	35
EMAS	7.90 (201)	35
AVTRON HS35M	4.19 (106)	2
STIEGMANN SRK20	3.75 (95)	1
DYNAPAR H20	2.00 (.51)	1
NORTHSTAR HS035	2.81 (71)	2
NORTHSTAR HS038	3.30 (84)	5
AVTRON AV32	1.93 (49)	.7



950-671919

CUSTOMER IS RESPONSIBLE FOR DETERMINING THAT BALDOR'S PRODUCT WILL PERFORM SUITABLY IN THE INTENDED APPLICATION.

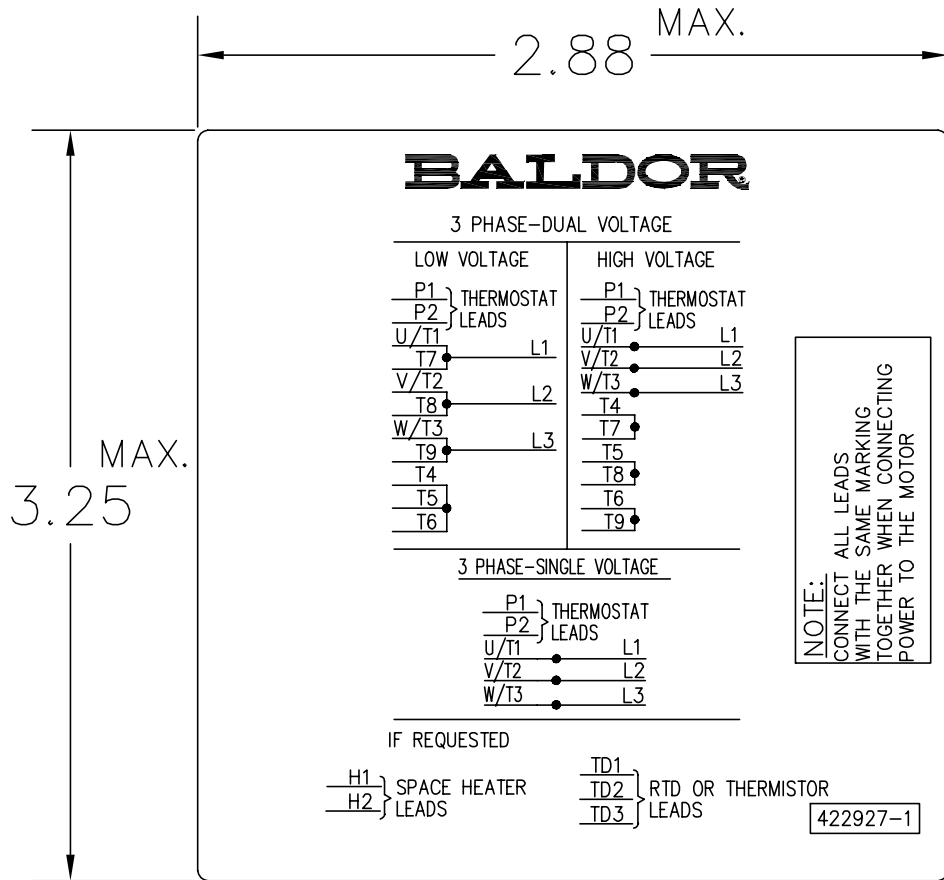
REV. DESC: ADD AVTRON AV850 TO FRAMES FL320 THRU FL440	TDR: 000001059525
REV. LTR: Y	VERSION: 23
FILE: \RGG\00003\694	REVISED: 07:16:49 02/12/2018
MTL: -	BY: RGGWT

BALDOR

DIM SHT TACH DIM NEMA FL180 - FL440 IEC FDL112 - FDL280

SH 1 of 1

422927-001



NOTE:
DATA TO BE SIZED
SO THAT IT FITS INTO
MATERIAL DECAL
DIMENSIONS. MAKE
LETTERS & NUMBERS
AS LARGE AS POSSIBLE.

MATERIAL: CERAMATIC DGF-P4
PERMA GRIP ADHESIVE

ALL LETTERS, NUMBERS
AND LINES TO BE BLACK
ON WHITE BACKGROUND.

422927-001

REV. DESC: CHANGE BACKGROUND COLOR FROM GOLD TO WHITE		
REV. LTR: B	VERSION: 02	TDR: 000000788708
FILE: \RGG\00000\203	REVISED: 08:09:29 03/04/2013	
MTL: -	BY: RGGWT	

BALDOR

EXTERNAL CONNECTION LABEL

SH 1 of 1

Marketing maintained PDF of MN406:

<http://www.baldor.com/support/Literature/Load.ashx/MN406?ManNumber=MN406>