

BALDOR® • RELIANCE 

Product Information Packet

ZDFRPM25304C

30HP, 1750RPM, 3PH, 60HZ, 2570C, TEFC, FOOT

Part Detail							
Revision:	-	Status:	PRD/A	Change #:		Proprietary:	No
Type:	AC	Elec. Spec:	L3379A	CD Diagram:	422927-001	Mfg Plant:	
Mech. Spec:		Layout:	617573-023	Poles:	04	Created Date:	04-10-2015
Base:		Eff. Date:	04-13-2015	Leads:			

Specs			
Catalog Number:	ZDFRPM25304C		
Enclosure:	TEFC		
Frame:	FL2570C		
Frame Material:	Exposed Laminations		
Output @ Frequency:	30.000 HP @ 60 HZ		
Synchronous Speed @ Frequency:	1800 RPM @ 60 HZ		
Voltage @ Frequency:	460.0 V @ 60 HZ		
Agency Approvals:	CCSA US		
	UR		
Auxillary Box:	No Auxillary Box		
Base Indicator:	Rigid		
Bearing Grease Type:	No Grease		
Current @ Voltage:	39.000 A @ 460.0 V		
Duty Rating:	CONT		
Feedback Device:	ENCODER		
Frame Prefix:	FL		
Heater Indicator:	No Heater		
Insulation Class:	H		

Mounting Arrangement:	F3		
Product Family:	General Industrial		
Pulley End Bearing Type:	Ball		
Pulley Face Code:	C-Face		
Shaft Ground Indicator:	No Shaft Grounding		
Shaft Rotation:	Reversible		
Motor Standards:	NEMA		
Thermal Device - Bearing:	NONE (OLD)		
Thermal Device - Winding:	Normally Closed Thermostat		

Nameplate 000613006NN										
	DUTY		HP	RPM		AMPS		VOLTS		HZ
	CONT		30	1780	39	460	60			
	CONT		30	3555	36	460	120			
CAT.NO.	ZDFRPM25304C			SPEC. NO.	P25T0311					
SER.NO.				FR	FL 2570C	INSUL	H			
PH.	3	MAX SAFE SPEED			5000	AMB.	40	MIN. AMB. 0		
DESIGN NO.	L3379A			TYPE		ENCL.	TEFC			
S.F.	1.0			D.E. BRG.	65BC03JPP30A					
ENCL MOD				O.D.E. BRG.	50BC03JPP30A					

Parts List		
Part Number	Description	Quantity
WS286698	WS P25T0311	1.000 EA
RA282906	RA P25T0311	1.000 EA
000613006NN	RPM AC WITH CERTIFIED LOGOS	1.000 EA
000692000FP	NP, WARNING LIFT INSTRUCTIONS	1.000 EA
000692000VD	LABEL WARNING	1.000 EA
036170004EA	ROUND HEAD DRIVE SCREW	4.000 EA
418018122A	LABEL	2.000 EA
422927001	C/D LABEL	1.000 EA
036100080KA	M10-1.50X 80MM HXSOCHDCS	3.000 EA
036500010AB	METRIC NUT M10-1.5PLTD400	4.000 EA
036500010AB	METRIC NUT M10-1.5PLTD400	4.000 EA
036610010AB	MHSLW M10 PLATED	4.000 EA
400638001H	SPRING WASHER	1.000 EA
418057491A	LIFTING LUG	2.000 EA
HA4054	SHORT T-DRAIN FITTING, .125" N.P.T.	1.000 EA
HA4054	SHORT T-DRAIN FITTING, .125" N.P.T.	1.000 EA
609830005ACL	STUD FRAME .375X11.38	4.000 EA
807582003BAA	BRKT,DE,FL250,313 BRG., MACH	1.000 EA
807582004AAB	BRKT,ODE,L250	1.000 EA
032018004AK	HHCS 1/4-20X1/2 PLATED	2.000 EA
034180012FA	KEY 3/8X3/8X1-1/2 L - 360	1.000 EA
036000012HB	HHCS M6X12MM LONG PLATED	3.000 EA
036000020HB	HHCS M6-1.0X20MM PLATED	4.000 EA
036620008AB	M6 METRIC EXT LOCKWASHER	1.000 EA

Parts List (continued)		
Part Number	Description	Quantity
065564000B	GASK 250-280	1.000 EA
075452000B	C/BOX, PAINTED 210-250	1.000 EA
075453000A	CBOXC, PAINTED 250-280	1.000 EA
078548001T	FAN 250	1.000 EA
406673002C	.75 CAP PLUG	1.000 EA
415000103A	T/LUG #14AWG-#4AWG W/HOLE FOR .250 BOLT	1.000 EA
415072001B	CLAMP	1.000 EA
417733004T	GASKET CONDUIT BOX	2.000 EA
418018074A	GROUND LABEL G100 METRIC 160 D.C.	1.000 EA
418057373A	SCREW SHEET METAL	7.000 EA
422962051B	STUB SHAFT	1.000 EA
607980163C	TETHER KIT	1.000 EA
607980163D	TETHER KIT	1.000 EA
607980192A	RF,BEI,HS35,TWISTLOCK	1.000 EA
708533003A	PLATE, BTM FAN/BLOWER	2.000 EA
708534050A	BLOWER SHROUD	1.000 EA
708534051A	FL250 FAN GRILL	1.000 EA
000640000P	TAG WINDING THERMOST	1.000 EA
004824007K	SPECIAL PAINT	0.100 EA
034180022FA	KEY 3/8X3/8X2-3/4 L	1.000 EA

REL. S.O.	-	VOLTS	460	ENCLOSURE	TEFC	WYE CONN EQ CKT OHMS PER PHASE (AT BASE RATING, 25 °C)
FRAME	FL2570	AMPS	39	MAX SAFE RPM	5000	
HP	30	DUTY	CONT	IM (AMPS)	20	R1 .106 X1 .513
BASE SPEED	1780	S.F.	1.0	P.F.@NL/FL	.054/.796	R2 .0656 X2 .782
PHASE/HERTZ	3/60	AMB °C/INSUL	40/H	WK ² (LB-FT ²)	3.5	XM 1.3.4

RATED FULL LOAD DATA

	RPM	HP	TORQUE LB-FT	FUND VOLTS	FREQ-HZ	AMPS
BASE SPEED	1780	30.0	89	460	60	38.7
MAX SPEED	3555	30.0	44	460	120	35.7
MIN SPEED	0	0	89	11.7	.682	38.7


LOAD PERFORMANCE AT BASE SPEED

	RPM	HP	TORQUE LB-FT	FUND VOLTS	FREQ-HZ	AMPS
NO LOAD	1800	0	0	460	60	19.3
1/4	1795	7.51	22	460	60	21.5
1/2	1790	15.0	44	460	60	25.8
3/4	1785	22.5	66	460	60	31.8
FULL LOAD	1780	30.0	89	460	60	38.7
O/L	1756	59.2	177	460	60	70.3

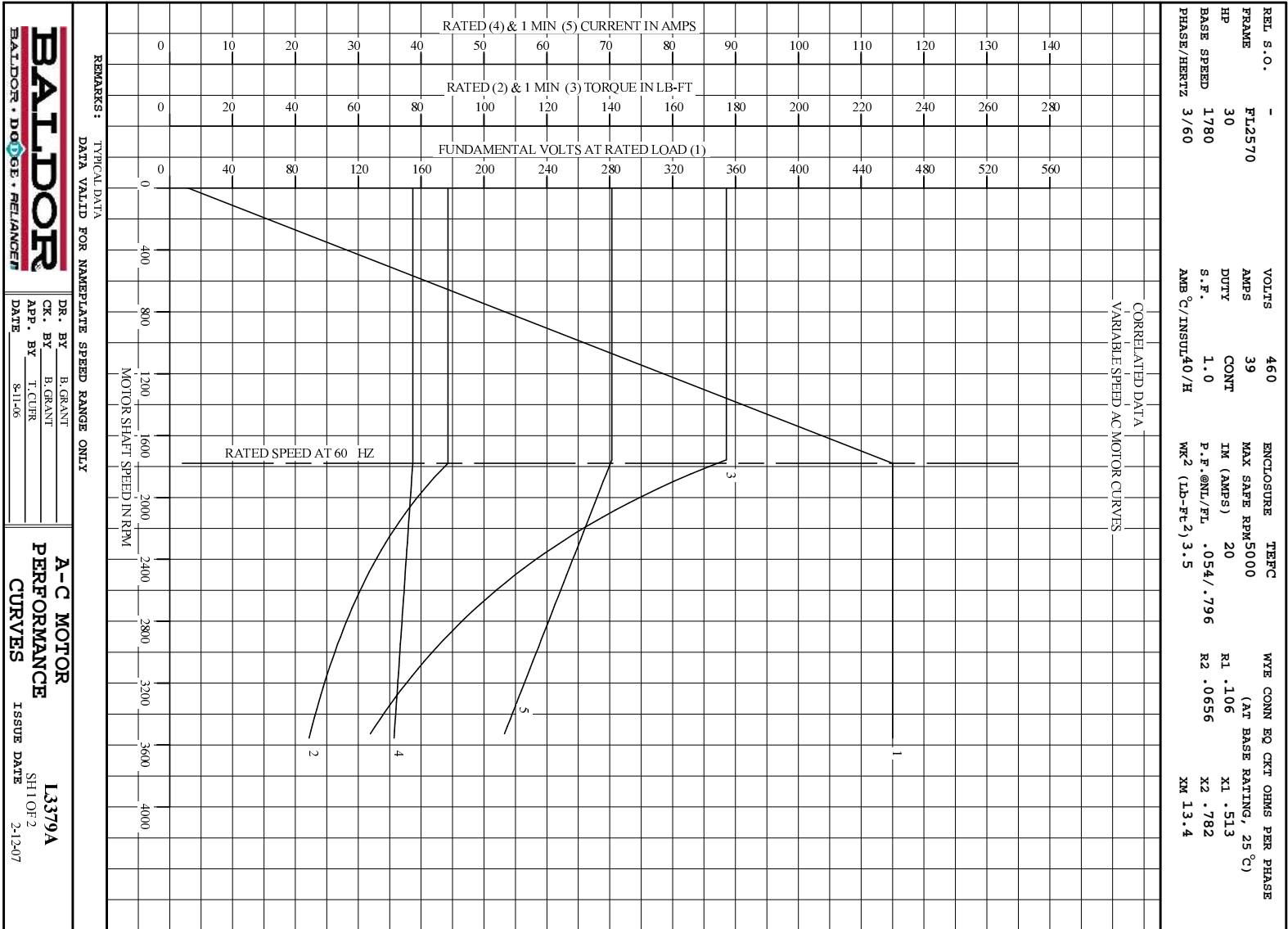
BLOWER DATA

VOLTS	PH/HZ	FL AMPS	LR AMPS	FRAME	CFM

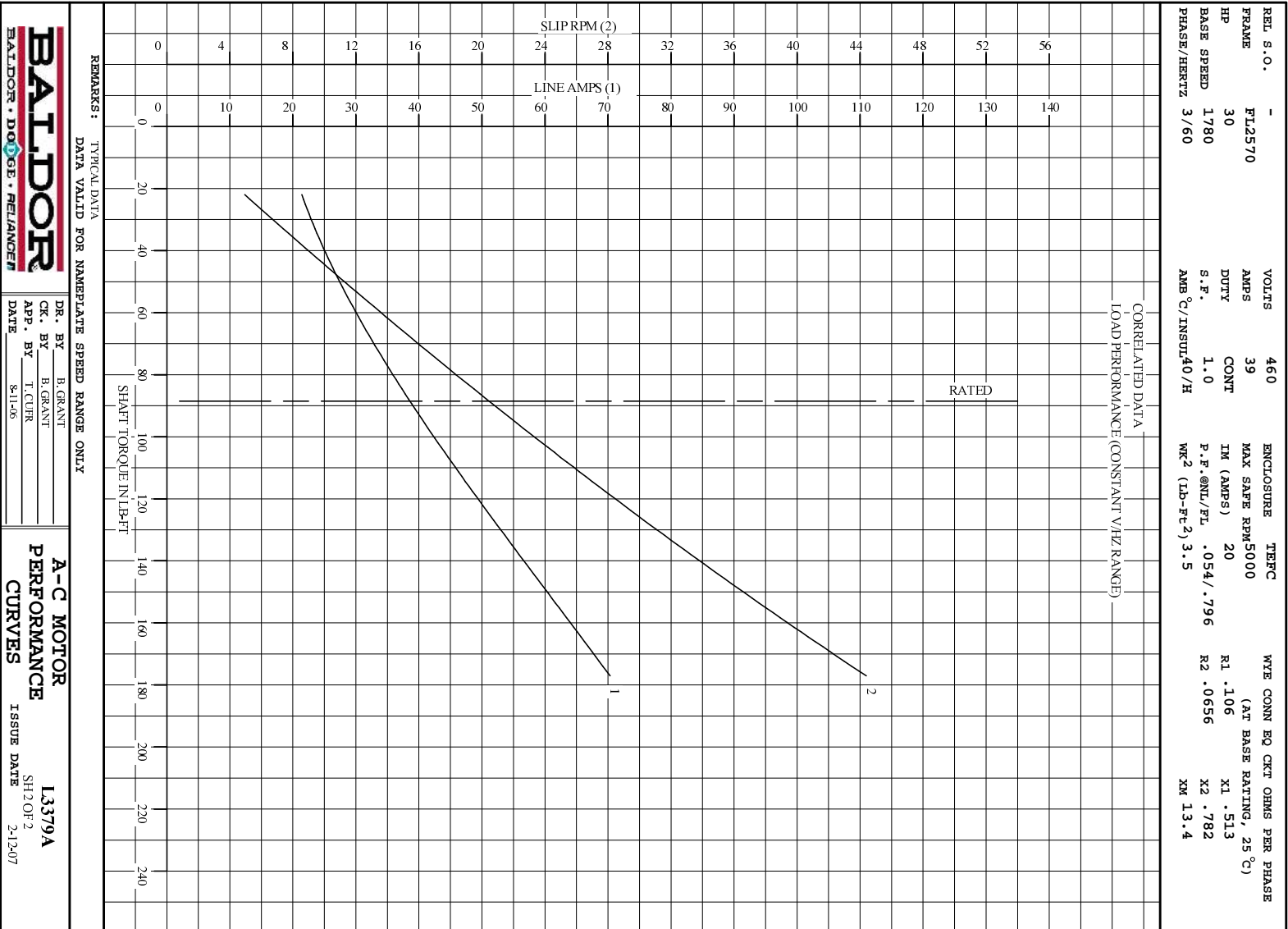
REMARKS: TYPICAL DATA
CORRELATED DATA

	DR. BY	B. GRANT	A-C MOTOR PERFORMANCE DATA L3379A ISSUE DATE 2-12-07
	CK. BY	T. CUER	
	APP. BY	8-11-06	
	DATE		

1



1



REMARKS: TYPICAL DATA
DATA VALID FOR NAMEPLATE SPEED RANGE ONLY

DR. BY B. GRANT
CK. BY B. GRANT
APP. BY T. CURR
DATE 8-11-06

**A-C MOTOR
PERFORMANCE
CURVES**

ISSUE DATE 2-12-07

L3379A

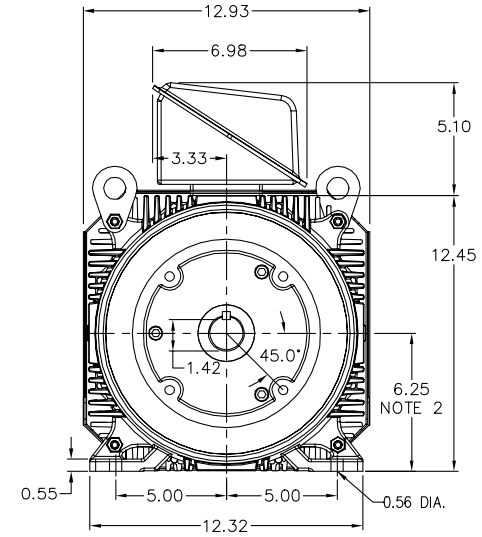
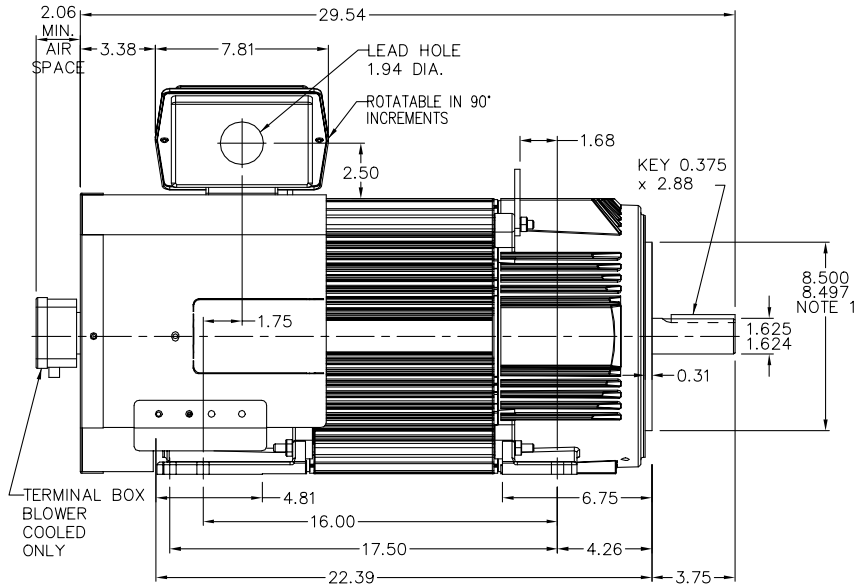
617573-023

RPM-AC FINNED FRAME VARIABLE SPEED ALTERNATING CURRENT MOTOR
FL2570C

ENCLOSURE: TOTALLY ENCLOSED
MOUNTING: FOOT / NEMA 250TC C-FACE
DRIVE METHOD: COUPLED OR BELTED

COOLING: BLOWER COOLED or
FAN COOLED

ACCESSORIES: PROVISIONS FOR
TACHOMETER MOUNTING
ONLY WHEN SPECIFIED



NOTE 1: C-FACE & TACHOMETER MOUNTING
1/2-13 TAP, 1.00 DEEP, ON A 7.25 DIA. BOLT CIRCLE
FACE RUNOUT AND ECCENTRICITY 0.004 MAX. T.I.R.

NOTE 2: SHAFT HEIGHT WILL NOT BE EXCEEDED
SHIMS UP TO 0.03 INCHES IN THICKNESS ARE USUALLY
REQUIRED FOR COUPLED OR GREARED MACHINES

TERMINAL BOX MAY BE LOCATED F1 OR F2 IF SPECIFIED
121 AMP STEEL TERMINAL BOX SHOWN
REFER TO 616779-50 FOR SPECIFIED TERMINAL BOX DIMENSIONS
REFER TO 616779-55 FOR SPECIFIED TACHOMETER DIMENSIONS

MOTOR WEIGHT: 475 LBS. (MAY VARY 15%)
DIMENSIONS ARE IN INCHES SCALE: 1.00

617573-023

CUSTOMER IS RESPONSIBLE FOR DETERMINING THAT BALDOR'S PRODUCT WILL PERFORM SUITABLY IN THE INTENDED APPLICATION.

REV. DESC: ADDED C-FACE DEPTH DIMENSION

REV. LTR: A VERSION: 01

TDR: 000000493632

FILE: \RGG\00003\142

REVISED: 14:34:48 03/13/2009

BY: CONDLM

MTL: -

BALDOR • DODGE • RELIANCE

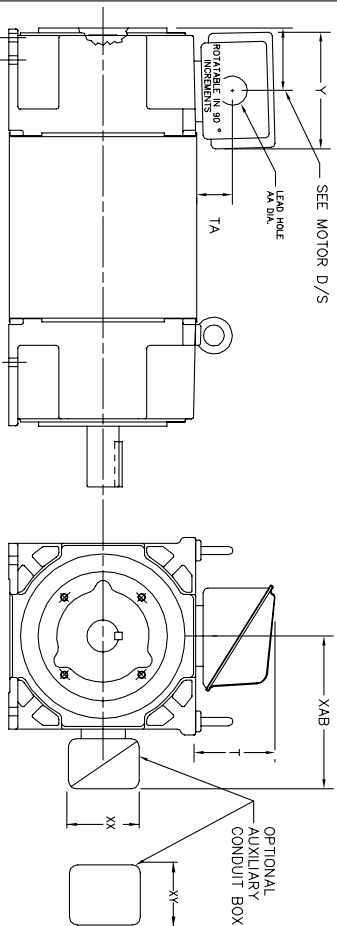
DIM SHT FL2570C RPM AC TE FT/NEMA 250TC MTG BLWR OR FAN COOL

SH 1 of 1

INDUSTRIAL ALTERNATING CURRENT MOTORS

RPM AC

STEEL, CAST IRON, MILL AND TERMINAL BOARD CONDUIT BOX DIMENSIONS
 NEMA FRAMES RL210 thru RL280 and IEC FRAMES RDL132 thru RDL180
 NEMA FRAMES FL180 thru FL280 and IEC FRAMES FDL112 thru FDL180



FRAME	TYPE	TERMINAL STRIP	AMPS	C/BOX	Y	TA	T	AA
FL180	STEEL	N	40	706320003A	5.00	1.62	3.00	1.12
FL180	STEEL	Y/N	7/8	706320005A	6.12	2.38	4.38	1.75/2.00
FL180	STEEL	N	208	706320007A	7.62	2.00	7.00	2.50/3.00
FL180	CAST IRON	Y/N	60	706320004C	5.75	2.38	4.38	1.0 TAP
FL180 & FDL11	MILL	Y	100	706310056A	7.75	2.30	4.40	PG29/PG16

FL210 & RL210	STEEL	N	61	0754520008	6.34	2.00	4.12	1.75
FL210 & RL210	STEEL	N	121	075454001AJ	7.69	2.38	5.25	1.94
FL210 & RL210	STEEL	N	305	706320016A	9.00	4.12	8.44	4.59
FL210 & RL210	CAST IRON	N	110	0754600628	7.25	2.50	5.25	1.5 TAP
FL210 & RL210	MILL	Y	100	706310056A	7.75	2.30	4.40	PG29/PG16
FL210 & RL210	MILL	Y	160	7063100568	9.00	3.06	5.40	PG36/PG16
FDL13 & RDL13	MILL	Y	160	7063100638	14.39	7.43	12.15	BLANK

FL250 & RL250	STEEL	N	61	0754520008	6.34	2.00	4.12	1.75
FL250 & RL250	STEEL	N	121	075454001AJ	7.69	2.38	5.25	1.94
FL250 & RL250	STEEL	N	305	706320016A	9.00	4.12	8.44	4.59
FL250 & RL250	CAST IRON	N	110	0754600628	7.25	2.50	5.25	1.5 TAP
FL250 & RL250	CAST IRON	N	210	706320013A	10.50	4.88	9.00	4.0 TAP
FL250 & RL250	CAST IRON	N	510	706320014D	15.00	7.56	12.81	5.0 TAP
FDL16 & RDL16	MILL	Y	100	706310056A	7.75	2.30	4.40	PG29/PG16
FDL16 & RDL16	MILL	Y	160	7063100568	9.00	3.06	5.40	PG36/PG16
FDL16 & RDL16	MILL	Y	400	7063100638	14.39	7.43	12.15	BLANK

FL280 & RL280	STEEL	N	160	706320009A	7.25	3.50	7.06	2.50
FL280 & RL280	STEEL	N	305	706320016A	9.00	4.12	8.44	4.59
FL280 & RL280	STEEL	N	500	702658001C	14.62	7.56	12.70	5.00
FL280 & RL280	CAST IRON	N	140	7063200128	9.25	4.81	8.58	3.0 TAP
FL280 & RL280	CAST IRON	N	210	706320013A	10.50	4.88	9.00	4.0 TAP
FL280 & RL280	CAST IRON	N	510	706320014D	15.00	7.56	12.81	5.0 TAP
FDL18 & RDL18	MILL	Y	100	706310056A	7.75	2.30	4.40	PG29/PG16
FDL18 & RDL18	MILL	Y	160	7063100568	9.00	3.06	5.40	PG36/PG16
FDL18 & RDL18	MILL	Y	400	7063100638	14.39	7.43	12.15	BLANK

FRAME SIZE	XAB	OPTIONAL AUXILIARY CONDUIT BOX DIMENSIONS (MAXIMUM)							
		XX	XY	PART NUMBER	FRAME SIZE	XX	XY	PART NUMBER	
FL180/FL180/RL180/RL180	7.38	4.25	4.25	603C07-26-A	FL180/FL180/RL180/RL180	10.88	8.00	8.00	706310-3-B
FL210/FL210/RL210/RL210	8.44	4.25	4.25	603C07-26-A	FL210/FL210/RL210/RL210	11.88	8.00	8.00	706310-3-B
FL250/FL250/RL250/RL250	9.12	4.25	4.25	603C07-26-A	FL250/FL250/RL250/RL250	12.62	8.00	8.00	706310-3-B

- (1) TAP CONDUIT
- (2) TAP PIPE TAP
- (3) CUSTOMER TO PROVIDE HOLE FOR CONDUIT.
- (4) 2" DN -5A or 1" TAP DN -4C

TERMINAL BOX CAN BE KEPT FOR LEAD OUTLET AT TOP. SIZES DR BOTTOM TERMINAL BOX CAN BE KEPT FOR LEAD OUTLET AT BOTTOM. SIZES DR TOP. DR C-1 MOUNTING IS SPECIFIED. DRX LOCATED ON TOP WHEN SPECIFIED.

050-667919

CUSTOMER IS RESPONSIBLE FOR DETERMINING THAT BALDOR'S PRODUCT WILL PERFORM SUITABLY IN THE INTENDED APPLICATION.

REV. DESC: REPLACE CONDUIT BOX TABLE	VERSION: 04	TDR: 00001047838
REV. LTR: D	REVISED: 11:46:16 10/19/2017	BY: RGGWT
FILE: \\RGG\00003\692		
MTL: 1		



DIM SHT NEMA RL210-RL280 FL180-FL280 IEC RDL132-RDL180

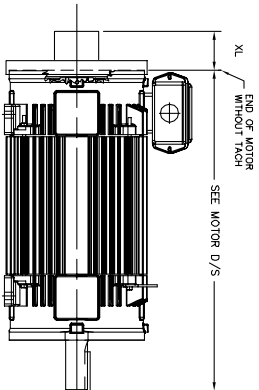
SH 1 of 1

616779-055

RPM AC TACHOMETER DIMENSIONS
 NEMA FRAMES FL180 thru FL440 and IEC FRAMES FDL112 thru FDL280
 DIMENSIONS ARE IN INCHES(mm)

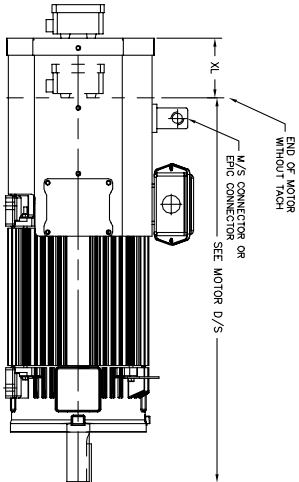
DPTV, DPSV, TEPV, TESV, TENV & TEAO-PB
 IC06, IC17, IC37, IC410, & IC416-PB

TACH MODEL	XL Inche(stmm)	LBS.
BEI R DYNAPAR H335	2.88 (74)	5
DYNAPAR H20 *	7.50(191)MAX	10
NORTHSTAR H335M	3.31 (84)	10
NORTHSTAR ST67	2.88 (74)	5
DYNAPAR H36	10.56 (268)	40
AVTRON M3 IR M4	3.62 (.92)	10
TAMGAMA T55013(X1)	6.00 (152)	10
NORTHSTAR ST65	2.88 (74)	5
NORTHSTAR ST85	2.00 (.51)	5
BEI H38B	10.19 (259)	15
TAMGAMA T32151	2.64 (67)	15
BEI H35	7.50 (191)	15
DYNAPAR H320	2.00 (.50)	5
DYNAPAR X23	12.88 (327)	10
STIEGMANN SRK25	7.25 (184.4)	10
NORTHSTAR H3035	3.00 (.76)	10
HEIDENHAIN EGN425	2.5 (63.5)	5
AVTRON H335M	4.19 (106.4)	5
HEIDENHAIN ERN480	5.00 (76.2)	5
DYNAPAR H25	7.00 (177.8)	10
DYNAPAR H22	3.62 (92.1)	5
AVTRON M285	2.54 (64.5)	9
AVTRON M850	2.54 (64.5)	9
AVTRON AV56	4.50 (115)	15
HS125	3.30 (84)	5
HS125	3.30 (84)	2
NORTHSTAR P18	3.25 (83)	15
DYNAPAR H4625	5.88 (150)	10
AVTRON AV495	9.50 (241)	18
AVTRON AV32	1.93 (49)	.7

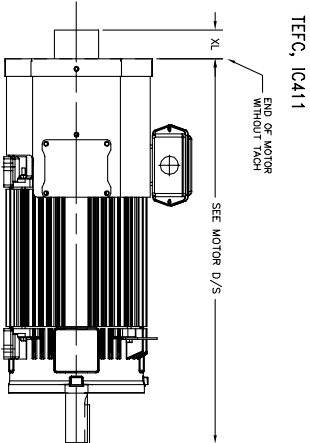


TEAO-BC, IC416-BC
 EXCLUDES NEMA FRAMES FL320 THRU FL440
 AND
 IEC FRAMES FDL200 THRU FDL280

TACH MODEL	XL Inche(stmm)	LBS.
BEI R DYNAPAR H335	4.50 (115)	10
DYNAPAR H20	4.50 (115)	15
AVTRON M3 IR M4	4.50 (115)	10
NORTHSTAR H335M	4.50 (115)	15
NORTHSTAR ST65	4.50 (115)	10
NORTHSTAR ST85	4.50 (115)	10
NORTHSTAR ST67	4.50 (115)	5
TAMGAMA T55008, T55013	4.50 (115)	10
DYNAPAR H320	4.50 (115)	15
STIEGMANN SRK25	4.50 (115)	10
STIEGMANN SRV/SR150	4.50 (115)	3
STIEGMANN SR350	4.50 (115)	15
H25D & H25E	4.50 (115)	15
AVTRON H335M	4.50 (115)	10
AVTRON AV85	4.50 (115)	10
AVTRON H35	4.50 (115)	5
AVTRON H67	4.50 (115)	10
HS138	4.50 (115)	5
TS2014	4.50 (115)	10
AVTRON H345	4.50 (115)	15
DYNAPAR H3038M	4.50 (115)	15
AVTRON AV32	4.50 (115)	.7
AVTRON AV850	4.50 (115)	9



TACH MODEL	XL Inche(stmm)	LBS.
BEI H335	2.88 (74)	7
NORTHSTAR H335M	3.31 (84)	10
DYNAPAR H20	3.75 (95)	15
DYNAPAR H335, H3038	2.88 (74)	7
H20(X1)	9.75 (248)	35
EMAS	7.90 (201)	35
AVTRON H335M	4.19 (106)	2
STIEGMANN SRK20	3.75 (95)	1
DYNAPAR H320	2.00 (.51)	1
NORTHSTAR H3035	2.81 (71)	2
NORTHSTAR H3038	3.30 (84)	5
AVTRON AV32	1.93 (49)	.7



950-671919

CUSTOMER IS RESPONSIBLE FOR DETERMINING THAT BALDOR'S PRODUCT WILL PERFORM SUITABLY IN THE INTENDED APPLICATION.

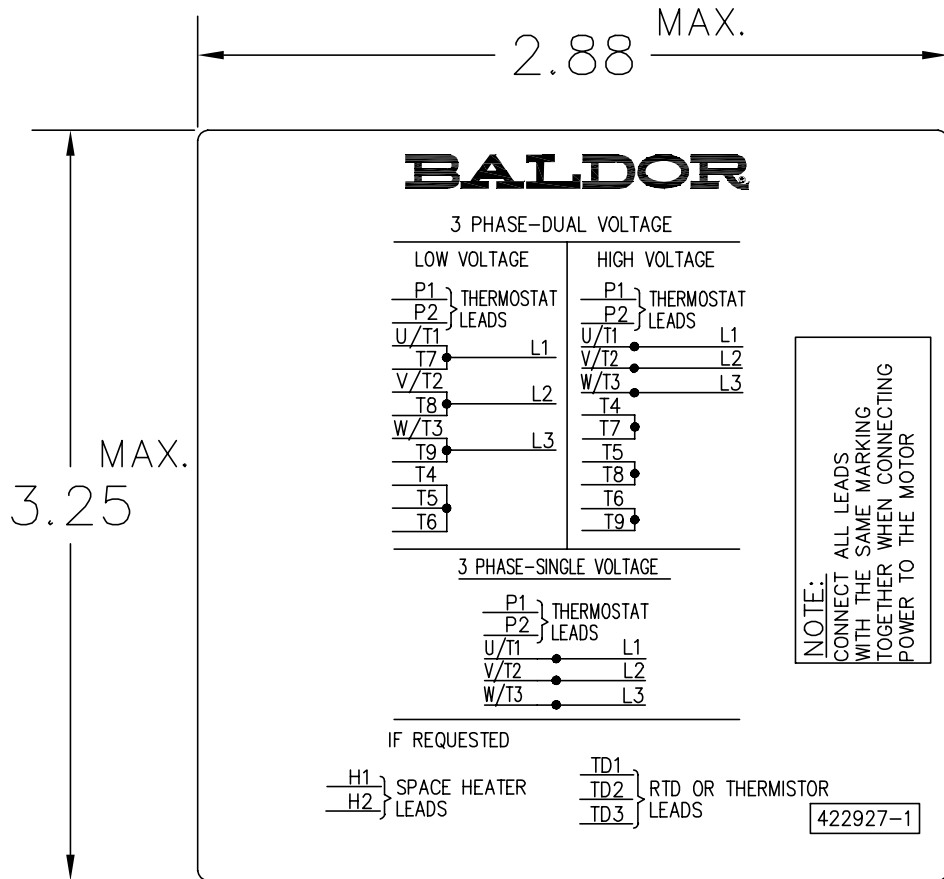
REV. DESC: ADD AVTRON AV850 TO FRAMES FL320 THRU FL440	TDR: 000001059525
REV. LTR: Y	VERSION: 23
FILE: \RGG\00003\694	REVISED: 07:16:49 02/12/2018
MTL: -	BY: RGGWT

BALDOR

DIM SHT TACH DIM NEMA FL180 - FL440 IEC FDL112 - FDL280

SH 1 of 1

422927-001



NOTE:
DATA TO BE SIZED
SO THAT IT FITS INTO
MATERIAL DECAL
DIMENSIONS. MAKE
LETTERS & NUMBERS
AS LARGE AS POSSIBLE.

MATERIAL: CERAMATIC DGF-P4
PERMA GRIP ADHESIVE

ALL LETTERS, NUMBERS
AND LINES TO BE BLACK
ON WHITE BACKGROUND.

422927-001

REV. DESC: CHANGE BACKGROUND COLOR FROM GOLD TO WHITE		
REV. LTR: B	VERSION: 02	TDR: 000000788708
FILE: \RGG\00000\203	REVISED: 08:09:29 03/04/2013	
MTL: -	BY: RGGWT	

BALDOR

EXTERNAL CONNECTION LABEL

SH 1 of 1

Marketing maintained PDF of MN406:

<http://www.baldor.com/support/Literature/Load.ashx/MN406?ManNumber=MN406>