

**BALDOR® • RELIANCE** 

**Product Information Packet**

**ZDPM18030C-BV**

**30HP,1800RPM,3PH,60HZ,1852C,TEBC,FOOT,**

Part Detail							
Revision:	B	Status:	PRD/A	Change #:		Proprietary:	No
Type:	AC	Elec. Spec:	PM3756A	CD Diagram:	422927-001	Mfg Plant:	
Mech. Spec:		Layout:	617235-315	Poles:	04	Created Date:	04-09-2015
Base:		Eff. Date:	03-12-2018	Leads:			

Specs			
Catalog Number:	ZDPM18030C-BV		
Enclosure:	TEBC		
Frame:	FL1852C		
Frame Material:	Aluminum		
Output @ Frequency:	30.000 HP @ 60 HZ		
Synchronous Speed @ Frequency:	1800 RPM @ 60 HZ		
Voltage @ Frequency:	460.0 V @ 60 HZ		
Auxillary Box:	No Auxillary Box		
Base Indicator:	Rigid		
Bearing Grease Type:	Polyrex EM (-20F +300F)		
Current @ Voltage:	32.300 A @ 460.0 V		
Duty Rating:	CONT		
Feedback Device:	TACHOMETER		
Frame Prefix:	FL		
Heater Indicator:	No Heater		
Insulation Class:	H		
Mounting Arrangement:	F3		
Product Family:	General Industrial		

<b>Pulley End Bearing Type:</b>	Ball		
<b>Pulley Face Code:</b>	C-Face		
<b>Shaft Ground Indicator:</b>	No Shaft Grounding		
<b>Shaft Rotation:</b>	Reversible		
<b>Motor Standards:</b>	NEMA		
<b>Thermal Device - Bearing:</b>	NONE (OLD)		
<b>Thermal Device - Winding:</b>	Normally Closed Thermostat		

Nameplate 000613006MY										
	<b>DUTY</b>	<b>HP</b>	<b>RPM</b>	<b>AMPS</b>	<b>VOLTS</b>	<b>HZ</b>				
	CONT	30	1800	32.3	460	60				
	CONT	30	3000	30.6	460	100				
<b>CAT.NO.</b>	ZDPM18030C-BV			<b>SPEC. NO.</b>	P18M0505					
<b>SER.NO.</b>				<b>FR</b>	FL 1852C	<b>INSUL</b>	H			
<b>PH.</b>	3		<b>MAX SAFE SPEED</b>	7200		<b>AMB.</b>	40		<b>MIN. AMB.</b>	-25
<b>DESIGN NO.</b>	PM3756A			<b>TYPE</b>		<b>ENCL.</b>	TEAO-BC			
<b>S.F.</b>	1.0			<b>D.E. BRG.</b>	45BC02JPP30A					
<b>ENCL MOD</b>				<b>O.D.E. BRG.</b>	35BC02JPP30A					

Nameplate 000692000VY		
IS <input type="text"/>	MEAS OPEN CIRCUIT VOLTAGE VOLTS AT <input type="text"/>	RPM.
EXCEED <input type="text"/>	MTR PH CURRENT SHOULD NOT	AMPS RMS PEAK TO
AVOID DEMAGNETIZATION		

Parts List		
Part Number	Description	Quantity
WS286790	WS P18M0505	1.000 EA
RA282998	RA P18M0505	1.000 EA
000613006MY	NP-RPMAC INVERTER DUTY	1.000 EA
000692000FP	NP, WARNING LIFT INSTRUCTIONS	1.000 EA
418057747A	METAL FASTENER	8.000 EA
000692000NH	LABEL DIRECTION AIR FL	1.000 EA
000692000VY	PERMANENT MAGNET MOTOR NAMEPLATE	1.000 EA
411716004A	219P039 - 219P039 - LA	1.000 EA
418056062A	NP AC BLOWER DATA	1.000 EA
422927001	C/D LABEL	1.000 EA
032003200CB	FL1852 THRU BOLT	4.000 EA
033102012AG	HXNUT LEAD CONN	4.000 EA
034017012AB	LCKW 1/4 STD. PLATED	4.000 EA
036000050JB	M8-1,25 X 50 MHHCS	2.000 EA
400638001D	WAVEN	1.000 EA
411693051B	LUG, LIFTING	2.000 EA
HA4054	SHORT T-DRAIN FITTING, .125" N.P.T.	1.000 EA
HA4054	SHORT T-DRAIN FITTING, .125" N.P.T.	1.000 EA
807580002BAA	BRKT,DE,FL181 807580-1WCC	1.000 EA
807580003AAB	BRKT,ODE180AC 807580-1WCC	1.000 EA
036000012HB	HHCS M6X12MM LONG PLATED	2.000 EA
036000035JB	MHHCS M8-1.25X35MM PLATE	4.000 EA
036000012HB	HHCS M6X12MM LONG PLATED	3.000 EA
036620009AB	M8 EXTERNAL LK WASHER	1.000 EA

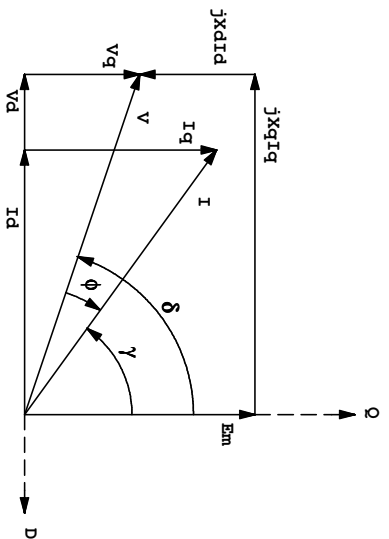
Parts List (continued)		
Part Number	Description	Quantity
418057169A	LKNUT CAMER	1.000 EA
065530000B	GASK	1.000 EA
075451000A	COVER, CONDUIT BOX	1.000 EA
406673002C	.75 CAP PLUG	2.000 EA
415000103G	TLUG	1.000 EA
422962051BW	STUB SHAFT	1.000 EA
800123015A	RESOLVER DYNAPAR	1.000 EA
417733001A	GSK C/ BOX BASE	2.000 EA
418010006B	PLATE, MOUNTING	1.000 EA
418018074A	GROUND LABEL G100 METRIC 160 D.C.	1.000 EA
418057260A	SCREW PHILLIPS PAN HD	4.000 EA
418057373A	SCREW SHEET METAL	3.000 EA
613450011A	BLMTR SQ AC 210	1.000 EA
706320003A	CONDUIT BOX	1.000 EA
807505050B	SHROUD, FAN/BLOWER	1.000 EA
807505051A	GRILL, FAN COVER	1.000 EA
418057243A	GROOVE PIN	1.000 EA
807504052D	FL180 FRAME	1.000 EA
000640000P	TAG WINDING THERMOST	1.000 EA
004824007K	SPECIAL PAINT	0.100 EA
034180022FA	KEY 3/8X3/8X2-3/4 L	1.000 EA

S.O. 0	VOLTS 460	TYPE IPM	STATOR RES. @ 25 °C .3489
FRAME F11852	AMPS 32	ENCLOSURE TEBC	OHMS (BETWEEN LINES)
HP 30	DUTY CONT	MAX SAFE RPM 7200	
BASE SPEED 1800	S.F. 1.0	WK <sup>2</sup> (Lb-Ft <sup>2</sup> ) .96	
PHASE/HERTZ 3/60	AMB °C/INSUL 40/H	MAX INSTANTANEOUS OVERLOAD AMPS 96	

**VARIABLE SPEED PERFORMANCE**

HP	AMPS (rms)	RPM	GAMMA*	POWER FACT.	EFF.	VOLTS (L-L) (rms)	Em (L-N) (rms)	Lq (mH)	Ld (mH)
OpenCkt**	N/A	1800	5.0	N/A	N/A	N/A	185	N/A	N/A
OpenCkt, hot	N/A	1800	5.0	N/A	N/A	N/A	160	N/A	N/A
6.10	8.0	1800	30.7	96.5	93.0	367	160	58.3	8.90
13.8	16.0	1800	39.6	95.3	94.2	413	160	42.6	8.70
21.7	24.0	1800	44.0	94.0	94.7	436	160	34.2	8.50
30.0	32.0	1800	48.5	92.9	94.7	459	160	30.5	8.30

Remarks: TYPICAL DATA  
 CONSTANT TORQUE 0-1800 RPM, CONSTANT POWER 1800-3000 RPM  
 200% OVERLOAD BELOW BASE SPEED TAPERED TO 100% AT 3000 RPM



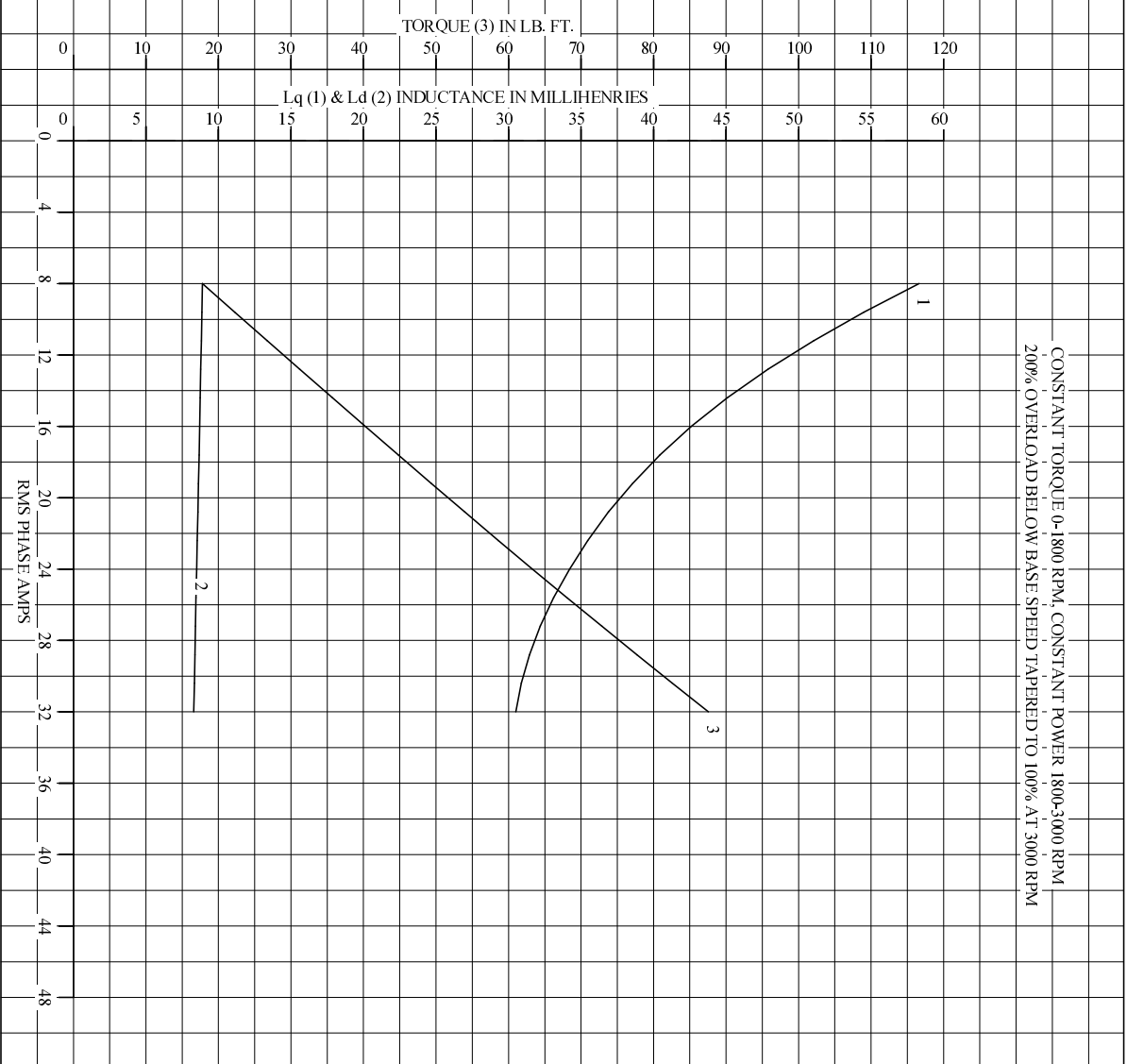
\*Gamma is the current angle relative to counter emf, defined to be positive when current leads counter emf.  
 Equivalently, Gamma is positive when Id is negative.  
 \*\*Data at 25°C - all other data at rated temperature

<b>BALDOR</b>	DR. BY _____	CD _____	<b>IPM MOTOR PERFORMANCE DATA</b>
	CK. BY _____	RM _____	
	APP. BY _____	RM _____	
	DATE 4/23/10		ISSUE DATE 4/23/10



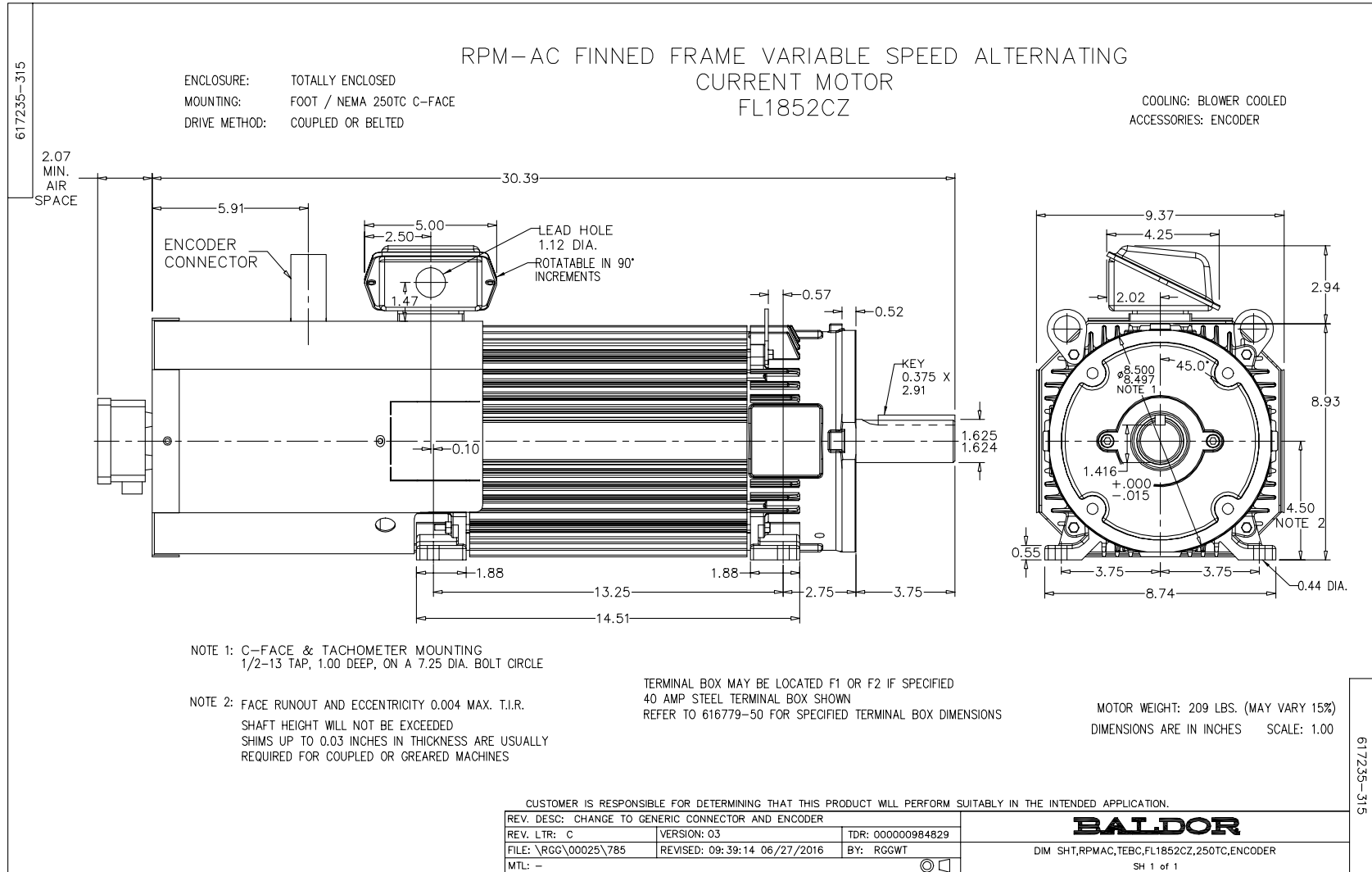
S.O. 0	VOLTS 460	TYPE IPM	STATOR RES. @ 25 °C .3489
FRAME F11852	AMPS 32	ENCLOSURE TEBC	OHMS (BETWEEN LINES)
HP 30	DUTY CONT	MAX SAFE RPM 7200	
BASE SPEED 1800	S.F. 1.0	WK <sup>2</sup> (Lb-Ft <sup>2</sup> ) .96	
PHASE/HERTZ 3/60	AMB °C/INSUL 40/H	MAX INSTANTANEOUS OVERLOAD AMPS 96	

**Lq, Ld, & Torque vs. RMS Phase Amps**



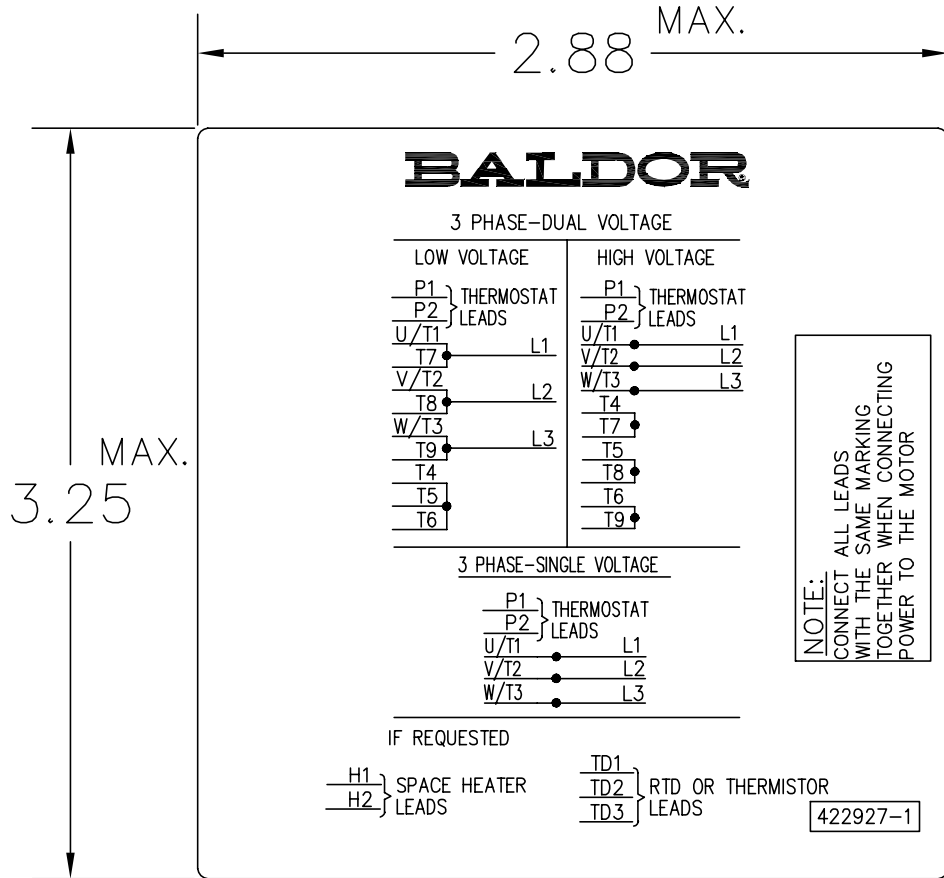
REMARKS : TYPICAL DATA

<b>BALDOR</b>	DR. BY _____	CD _____	<b>IPM MOTOR</b>	
	CK. BY _____	RM _____		<b>PERFORMANCE</b>
	APP. BY _____	RM _____		
DATE 4/23/10		ISSUE DATE PM3/56A 4/23/10		





422927-001



NOTE:  
DATA TO BE SIZED  
SO THAT IT FITS INTO  
MATERIAL DECAL  
DIMENSIONS. MAKE  
LETTERS & NUMBERS  
AS LARGE AS POSSIBLE.

MATERIAL: CERAMATIC DGF-P4  
PERMA GRIP ADHESIVE

ALL LETTERS, NUMBERS  
AND LINES TO BE BLACK  
ON WHITE BACKGROUND.

NOTE:  
CONNECT ALL LEADS  
WITH THE SAME MARKING  
TOGETHER WHEN CONNECTING  
POWER TO THE MOTOR

422927-001

REV. DESC: CHANGE BACKGROUND COLOR FROM GOLD TO WHITE		
REV. LTR: B	VERSION: 02	TDR: 000000788708
FILE: \RGG\00000\203	REVISED: 08:09:29 03/04/2013	
MTL: -	BY: RGGWT	

**BALDOR**

EXTERNAL CONNECTION LABEL

SH 1 of 1

Marketing maintained PDF of MN406:

<http://www.baldor.com/support/Literature/Load.ashx/MN406?ManNumber=MN406>